

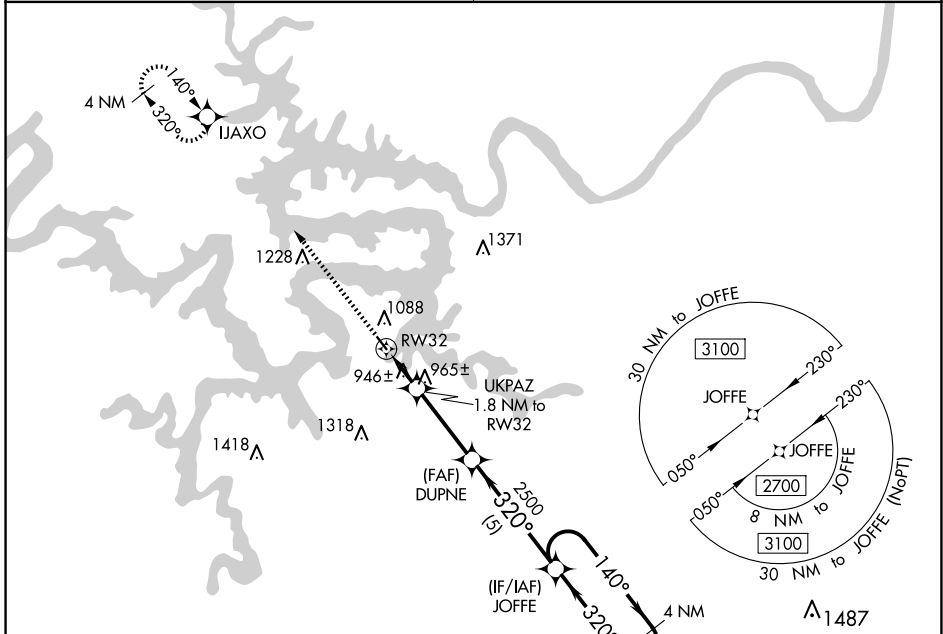
WAAS CH 86832 W32A	APP CRS 320°	Rwy Idg 3205 TDZE 875 Apt Elev 876
--	------------------------	---

RNAV (GPS) RWY 32

GRAND GLAIZE-OSAGE BEACH (K15)

<p>NA DME/DME RNP-0.3 NA. Use Kaiser Lake Ozark altimeter setting; when not received, use Camdenon altimeter setting and increase all MDA 40 feet. Procedure NA at night. Helicopter visibility reduction below 1 SM NA.</p>	<p>MISSED APPROACH: Climb to 2700 direct IJAXO and hold.</p>
---	--

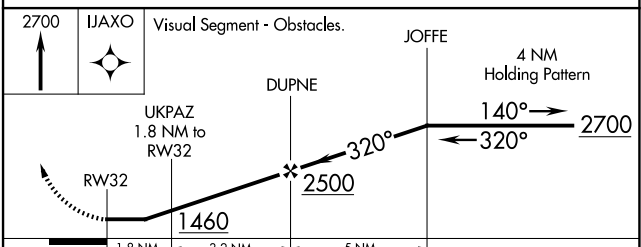
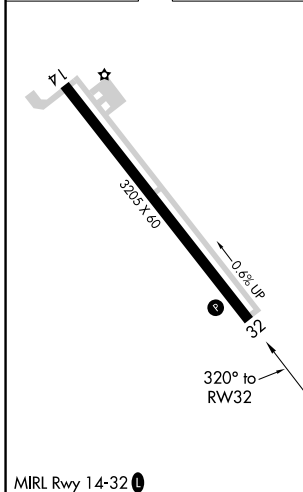
<p>MIZZU APP CON 124.1 353.925</p>	<p>UNICOM 122.8 (CTAF) 1</p>
---	---



NC-3, 19 MAR 2026 to 16 APR 2026

NC-3, 19 MAR 2026 to 16 APR 2026

ELEV 876	TDZE 875
----------	----------



CATEGORY	A	B	C	D
LP MDA	1220-1	345 (400-1)		NA
LNAV MDA	1240-1	365 (400-1)		NA
CIRCLING	1420-1	544 (600-1)		NA