

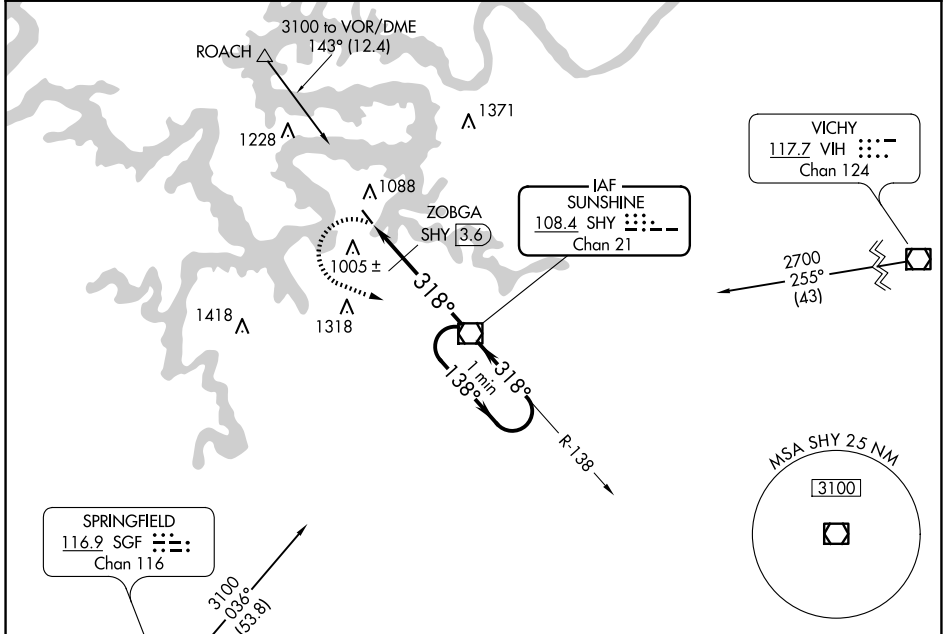
VOR/DME SHY <b>108.4</b> Chan 21	APP CRS <b>318°</b>	Rwy Idg <b>3205</b> TDZE <b>875</b> Apt Elev <b>876</b>
--	------------------------	---

**VOR RWY 32**  
GRAND GLAIZE-OSAGE BEACH (K15)

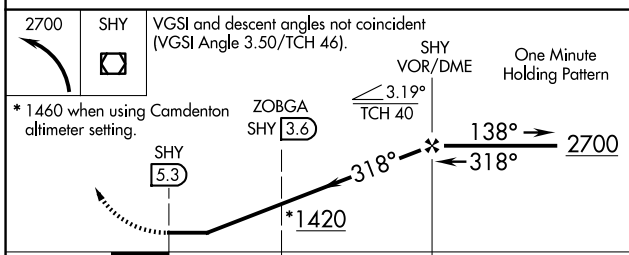
**▼** Helicopter visibility reduction below 1 SM NA. Procedure NA at night.  
**▲ NA** Use Kaiser Lake Ozark altimeter setting; when not received, use Camdenton altimeter setting and increase all MDA 40 feet.

MISSED APPROACH: Climbing left turn to 2700 direct SHY VOR/DME and hold.

MIZZU APP CON <b>124.1 353.925</b>	UNICOM <b>122.8 (CTAF) 0</b>
---------------------------------------	---------------------------------



2700 SHY VGSi and descent angles not coincident (VGSi Angle 3.50/TCH 46).  
 One Minute Holding Pattern



ELEV 876	TDZE 875
----------	----------

MRL Rwy 14-32 0

FAF to MAP 5.3 NM					
Knots	60	90	120	150	180
Min:Sec	5:18	3:32	2:39	2:07	1:46

CATEGORY	A	B	C	D
S-32	1420-1	545 (600-1)		NA
CIRCLING	1420-1	544 (600-1)		NA
ZOBGA FIX MINIMUMS (DME REQUIRED)				
S-32	1280-1	405 (500-1)		NA
CIRCLING	1420-1	544 (600-1)		NA

NC-3, 19 MAR 2026 to 16 APR 2026

NC-3, 19 MAR 2026 to 16 APR 2026