

VORTAC PER 113.2 Chan 79	APP CRS 263°	Rwy Idg TDZE Apt Elev	N/A N/A 1030
--	------------------------	-----------------------------	---

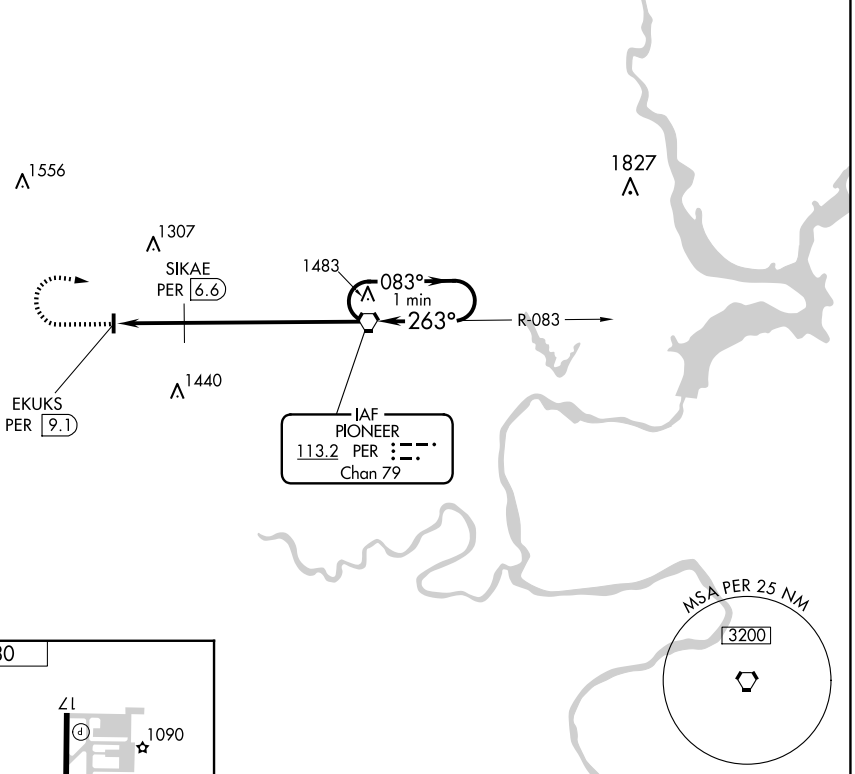
VOR-A

BLACKWELL-TONKAWA MUNI (BKN)

⚠ When local altimeter setting not received, use Ponca City altimeter setting and increase all MDA 40 feet.

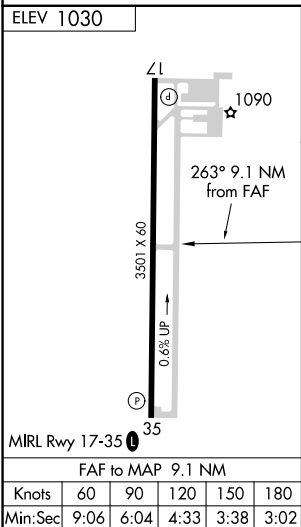
MISSED APPROACH: Climb to 2800 then right turn direct PER VORTAC and hold.

AWOS-3PT 120.575	KANSAS CITY CENTER 127.8 319.1	UNICOM 122.8 (CTAF) ①
----------------------------	--	--



SC-1, 19 MAR 2026 to 16 APR 2026

SC-1, 19 MAR 2026 to 16 APR 2026



2800	PER	One Minute Holding Pattern		
PER VORTAC	SIKAE PER 6.6	083° → 2800		
EKUKS PER 9.1	263°	← 263°		
1640*	2.5 NM	6.6 NM		
* 1680 when using Ponca City altimeter setting				
CATEGORY	A	B	C	D
CIRCLING	1640-1	610 (700-1)	1640-1¾ 610 (700-1¾)	NA
SIKAE FIX MINIMUMS				
CIRCLING	1440-1 410 (500-1)	1480-1 450 (500-1)	1620-1¾ 590 (600-1¾)	NA