

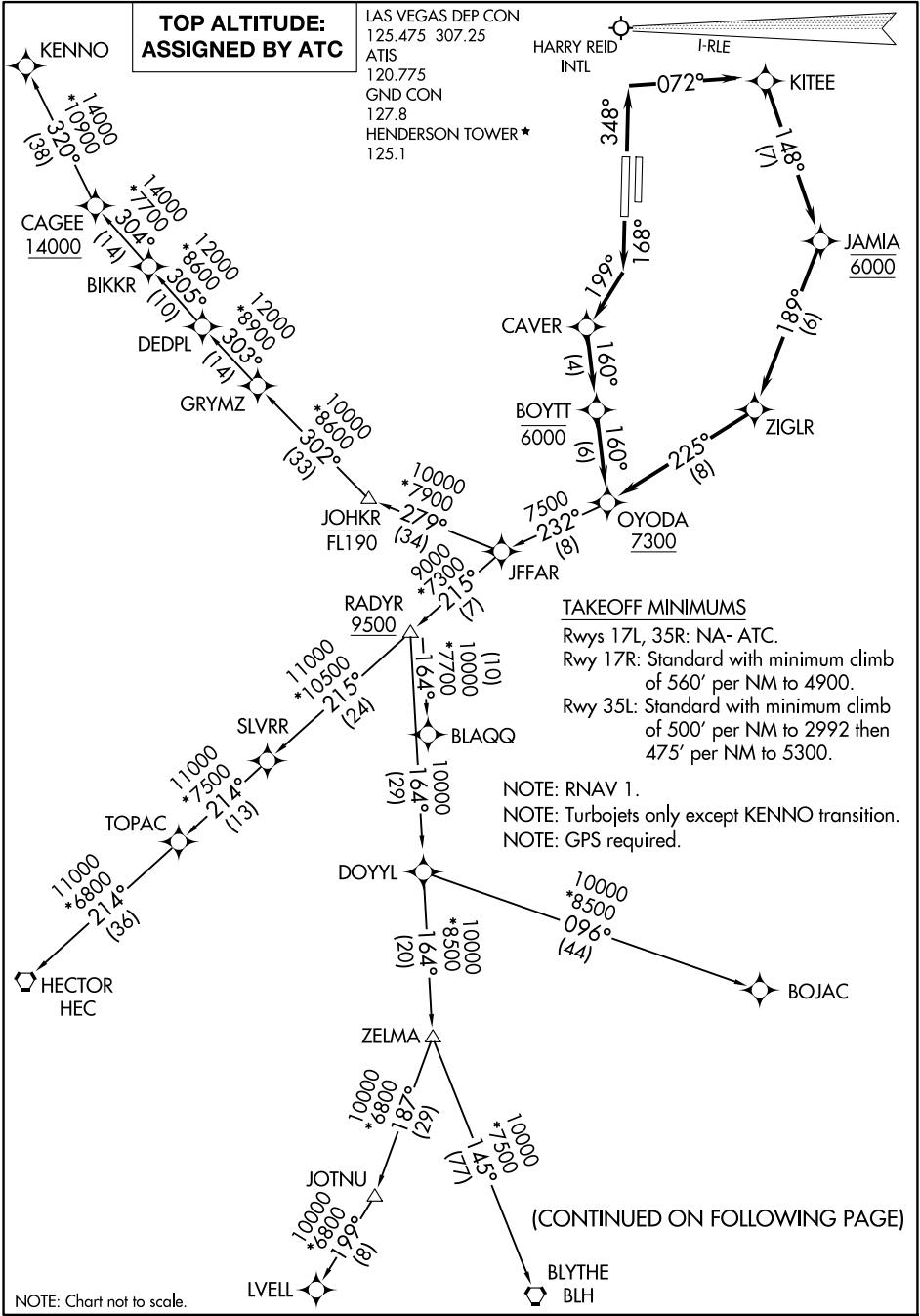
# OYODA TWO DEPARTURE (RNAV)

AL-6514 (FAA)

HENDERSON EXEC (HND)  
LAS VEGAS, NEVADA

**TOP ALTITUDE:  
ASSIGNED BY ATC**

LAS VEGAS DEP CON  
125.475 307.25  
ATIS  
120.775  
GND CON  
127.8  
HENDERSON TOWER \*  
125.1



**TAKEOFF MINIMUMS**

Rwys 17L, 35R: NA- ATC.  
Rwy 17R: Standard with minimum climb of 560' per NM to 4900.  
Rwy 35L: Standard with minimum climb of 500' per NM to 2992 then 475' per NM to 5300.

NOTE: RNAV 1.  
NOTE: Turbojets only except KENNO transition.  
NOTE: GPS required.

(CONTINUED ON FOLLOWING PAGE)

NOTE: Chart not to scale.

# OYODA TWO DEPARTURE (RNAV)

(OYODA2.OYODA) 22APR21

LAS VEGAS, NEVADA  
HENDERSON EXEC (HND)

SW-4, 19 MAR 2026 to 16 APR 2026

SW-4, 19 MAR 2026 to 16 APR 2026



DEPARTURE ROUTE DESCRIPTION

TAKEOFF RUNWAY 17R: Climb on heading 168° to intercept course 199° to CAVER, then on track 160° to cross BOYTT at or below 6000, then on track 160° to cross OYODA at or above 7300, thence. . . .

TAKEOFF RUNWAY 35L: Climb on heading 348° to intercept course 072° to KITEE, then on track 148° to cross JAMIA at 6000, then on track 189° to ZIGLR, then on track 225° to cross OYODA at or above 7300, thence. . . .

. . . (transition). Maintain ATC assigned altitude, expect filed altitude 10 minutes after departure.

BLAQQ TRANSITION (OYODA2.BLAQQ)

BLYTHE TRANSITION (OYODA2.BLH)

BOJAC TRANSITION (OYODA2.BOJAC)

HECTOR TRANSITION (OYODA2.HEC)

KENNO TRANSITION (OYODA2.KENNO)

LVELL TRANSITION (OYODA2.LVELL)

SLVRR TRANSITION (OYODA2.SLVRR)

SW-4, 19 MAR 2026 to 16 APR 2026

SW-4, 19 MAR 2026 to 16 APR 2026