

WAAS CH 72807 W14A	APP CRS 147°	Rwy Idg 4600 TDZE 1142 Apt Elev 1145
--	------------------------	---

RNAV (GPS) RWY 14

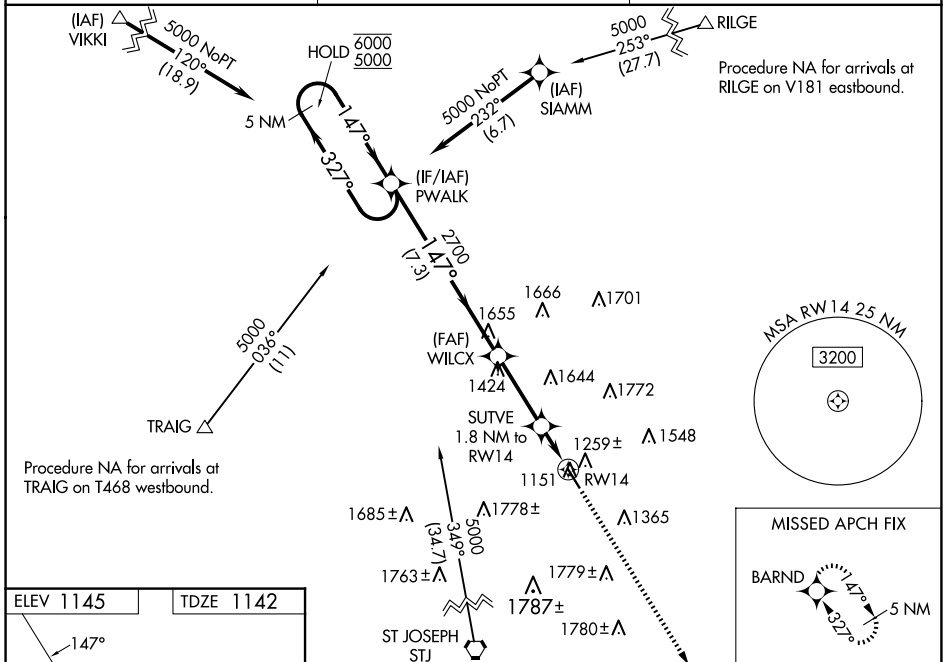
NORTHWEST MISSOURI RGNL (EVU)

RNP APCH - GPS.

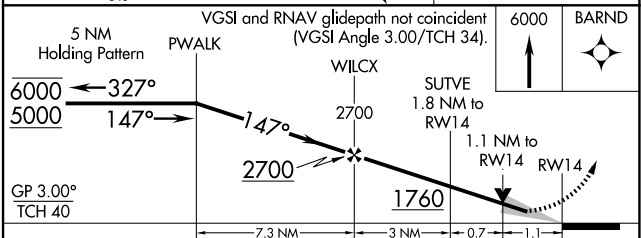
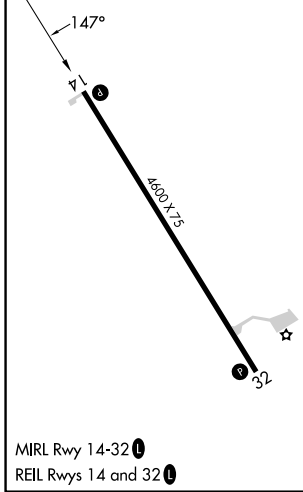
NA Circling NA east of Rwy 14-32. For uncompensated Baro-VNAV systems, LNAV/VNAV NA below -17°C or above 54°C. When local altimeter setting not received, use St. Joseph altimeter setting and increase LPV DA to 1517 feet, LNAV/VNAV DA to 1682 feet and all visibilities ½ SM. Increase all MDAs 140 feet, and LNAV visibility Cat C ¾ SM. Baro-VNAV and VDP NA when using St. Joseph altimeter setting.

MISSED APPROACH: Climb to 6000 direct BARND and hold, continue climb-in-hold to 6000.

AWOS-3PT 118.225	MINNEAPOLIS CENTER 119.6 290.4	UNICOM 122.8 (CTAF)
----------------------------	--	-------------------------------



ELEV 1145	TDZE 1142
-----------	-----------



CATEGORY	A	B	C	D
LPV DA	1392-1 250 (300-1)			NA
LNAV/VNAV DA	1557-1 415 (500-1 ¾)			NA
LNAV MDA	1520-1 378 (400-1)			NA
CIRCLING	1560-1 415 (500-1)	1600-1 455 (500-1)	2120-3 975 (1000-3)	NA

NC-3, 19 MAR 2026 to 16 APR 2026

NC-3, 19 MAR 2026 to 16 APR 2026