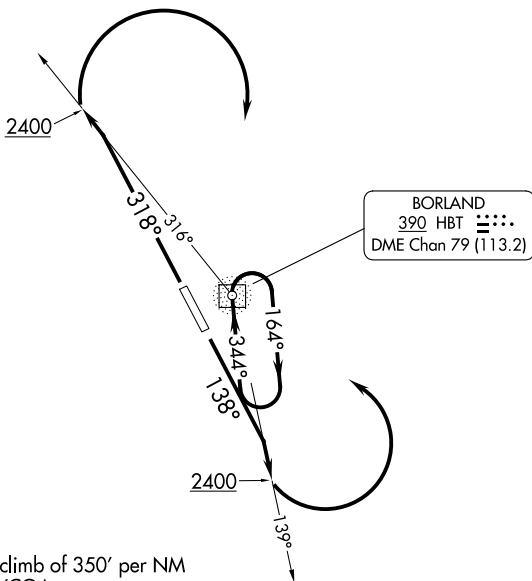


(HBT2.HBT) 24025

BORLAND TWO DEPARTURE (OBSTACLE)

SAND POINT (SDP) (PASD)
AL-6537 (FAA)
SAND POINT, ALASKA

ANCHORAGE CENTER
125.35 346.3
COLD BAY RADIO
122.3
CTAF
122.3



NOTE: ADF required.

TAKEOFF MINIMUMS

Rwy 14: Standard.

Rwy 32: Standard with minimum climb of 350' per NM to 1200, or 2600-3 for VCOA.

TAKEOFF OBSTACLE NOTES

- Rwy 32: Ships beginning 1493' from DER, crossing extended runway centerline, 100' MSL.
- Vegetation beginning 1.4 NM from DER, 392' right of centerline, up to 6' AGL/256' MSL.
- Vegetation, terrain beginning 1.5 NM from DER, 534' right of centerline, up to 296' MSL.
- Vegetation beginning 1.6 NM from DER, 995' right of centerline, up to 7' AGL/315' MSL.
- Terrain, vegetation beginning 1.7 NM from DER, on and left of centerline, up to 410' MSL.
- Vegetation beginning 1.7 NM from DER, 1493' right of centerline, up to 6' AGL/351' MSL.
- Vegetation beginning 1.9 NM from DER, 161' right of centerline, up to 7' AGL/401' MSL.
- Terrain, vegetation beginning 2 NM from DER, 326' right of centerline, up to 456' MSL.
- Vegetation 2.1 NM from DER, 2753' right of centerline, 5' AGL/478' MSL.
- Terrain, vegetation beginning 2.2 NM from DER, 388' right of centerline, up to 619' MSL.
- Terrain 2.5 NM from DER, 1994' right of centerline, 472' MSL.

NOTE: Chart not to scale.

DEPARTURE ROUTE DESCRIPTION

TAKEOFF RUNWAY 14: Climb on heading 138° to intercept bearing 139° from HBT NDB to 2400 then climbing left turn direct HBT NDB, thence. . . .

TAKEOFF RUNWAY 32: Climb on heading 318° to intercept bearing 316° from HBT NDB to 2400 then climbing right turn direct HBT NDB, or for VCOA, cross Sand Point Airport at or above 2500, thence. . . .

VCOA RUNWAY 32: Obtain ATC approval for VCOA when requesting IFR clearance. Climb in visual conditions to cross Sand Point Airport at or above 2500 then climb direct HBT NDB, thence. . . .

. . . .continue climb in HBT NDB holding pattern to 10000 before proceeding on course.

BORLAND TWO DEPARTURE (OBSTACLE)

(HBT2.HBT) 13SEP18

SAND POINT, ALASKA
SAND POINT (SDP) (PASD)

AK, 19 MAR 2026 to 14 MAY 2026

AK, 19 MAR 2026 to 14 MAY 2026