

NDB/DME HBT 390	APP CRS 339°	Rwy Ldg TDZE 24 Apt Elev 24
Chan 79 (113.2)		

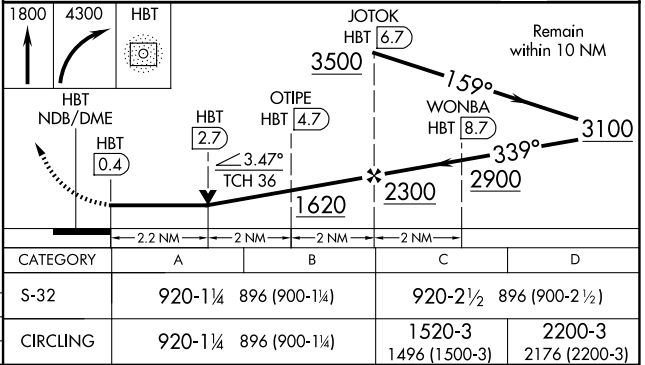
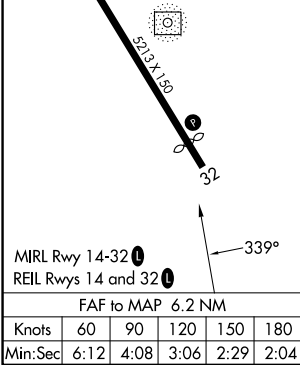
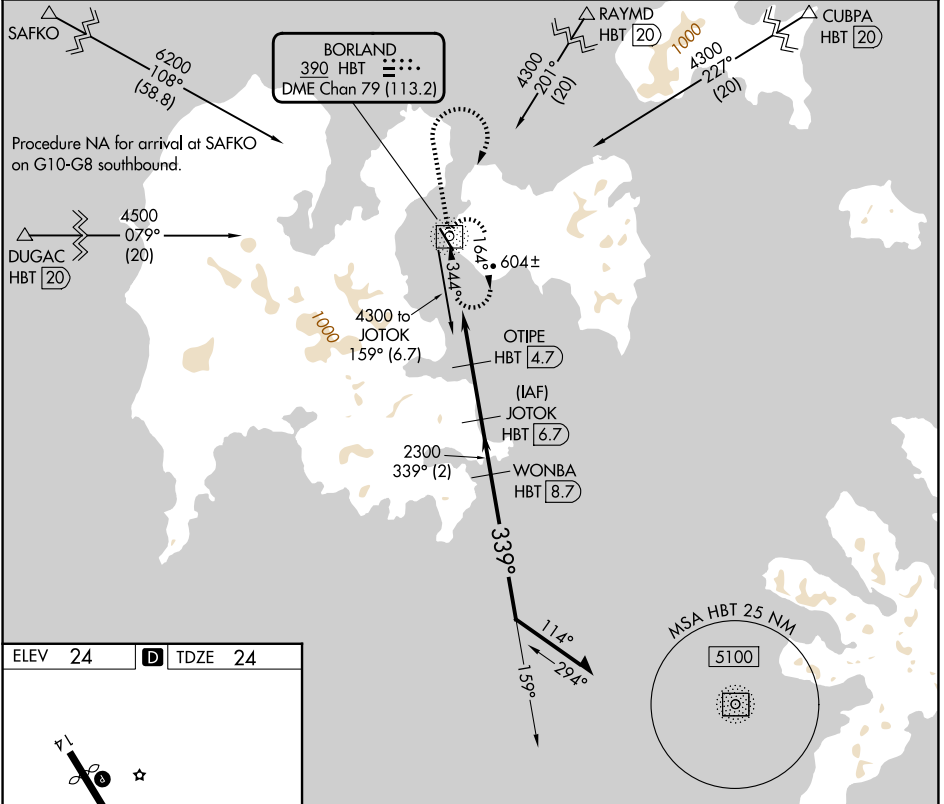
NDB RWY 32

SAND POINT (SDP) (PASD)

⚠ Circling NA northeast of Rwy 14-32. DME required.

⚠ MISSED APPROACH: Climb to 1800 then climbing right turn to 4300 direct HBT NDB and hold, continue climb-in-hold to 4300.

AWOS-3P 134.85	ANCHORAGE CENTER 125.35 346.3	COLD BAY RADIO 122.3	UNICOM 122.8	CTAF 122.3 Ⓛ
--------------------------	---	--------------------------------	------------------------	-------------------------------



AK, 19 MAR 2026 to 14 MAY 2026

AK, 19 MAR 2026 to 14 MAY 2026