

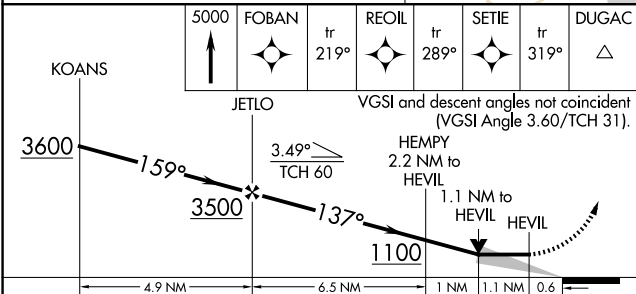
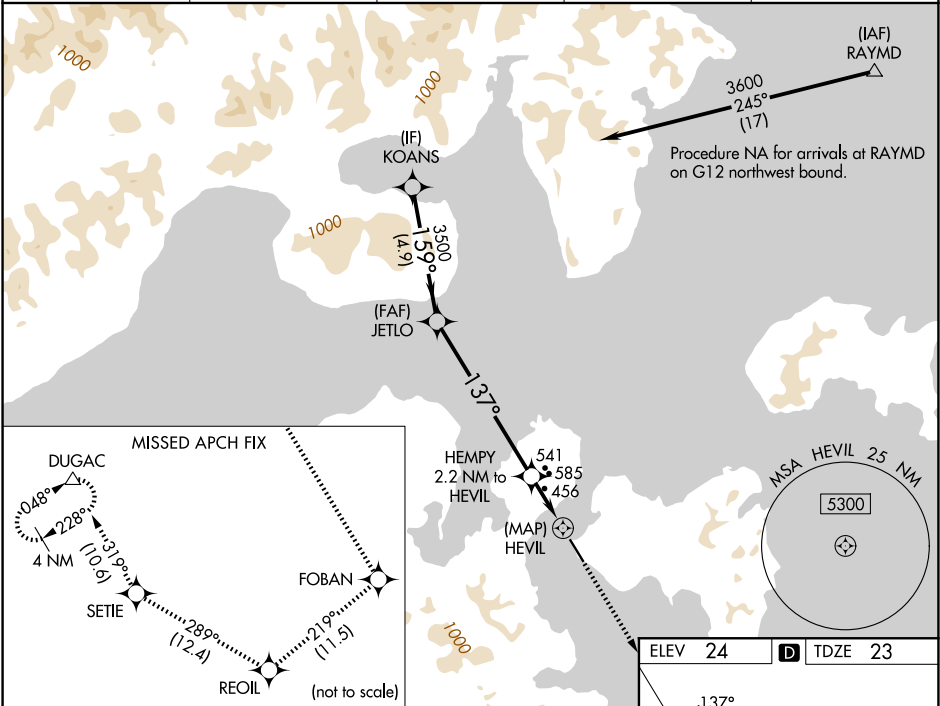
WAAS CH <b>86844</b> <b>W14B</b>	APP CRS <b>137°</b>	Rwy Ldg TDZE Apt Elev	<b>4099</b> <b>23</b> <b>24</b>
--	------------------------	-----------------------------	---------------------------------------

# RNAV (GPS) Y RWY 14

SAND POINT (SDP) (PASD)

RNP APCH-GPS.	MISSED APPROACH: Climb to 5000 on the RNAV missed approach route to DUGAC and hold.
Circling NA northeast of Rwy 14-32.	

AWOS-3P <b>134.85</b>	ANCHORAGE CENTER <b>125.35 346.3</b>	COLD BAY RADIO <b>122.3</b>	UNICOM <b>122.8</b>	CTAF <b>122.3 0</b>
--------------------------	---	--------------------------------	------------------------	------------------------



	5000	FOBAN	tr	REOIL	tr	SETIE	tr	DUGAC
			219°		289°		319°	
VGSIs and descent angles not coincident (VGSIs Angle 3.60/TCH 31).								
CATEGORY	A	B	C	D				
LP MDA	720-1	697 (700-1)	720-2	697 (700-2)				
LNAV MDA	840-1 817 (900-1)	840-1¼ 817 (900-1¼)	840-2½	817 (900-2½)				
CIRCLING	840-1¼	816 (900-1¼)	1580-3 1556 (1600-3)	2240-3 2216 (2300-3)				

ELEV 24	TDZE 23
---------	---------

MIRL Rwy 14-32   
REIL Rws 14 and 32

AK, 19 MAR 2026 to 14 MAY 2026

AK, 19 MAR 2026 to 14 MAY 2026