

SAND POINT, ALASKA

AL-6537 (FAA)

25331

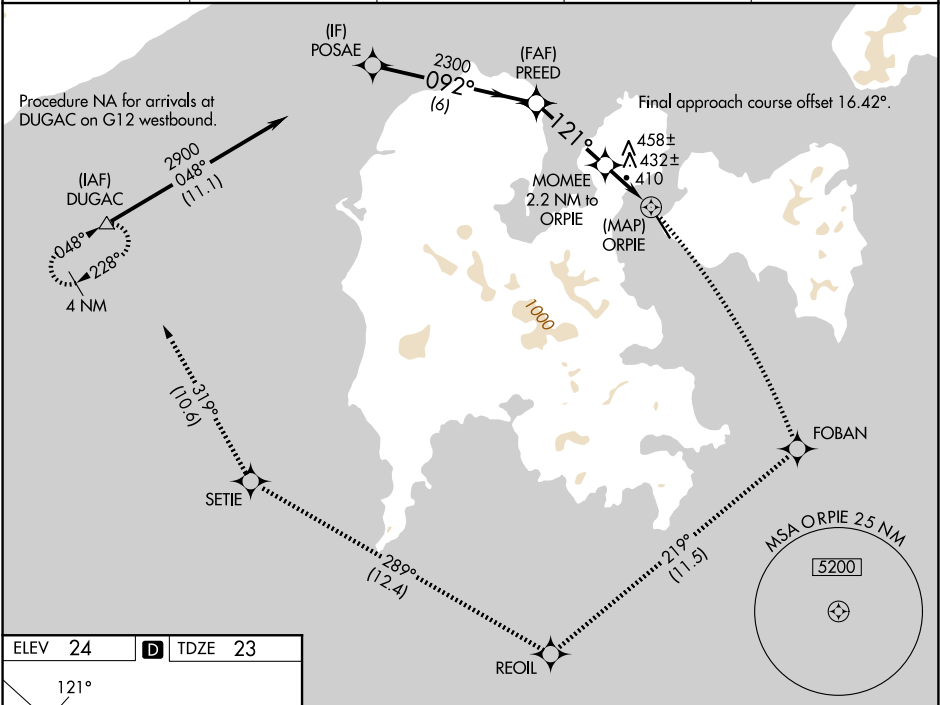
WAAS CH 56245 W14A	APP CRS 121°	Rwy Ldg TDZE Apt Elev	4099 23 24
----------------------------------------	------------------------	-----------------------------	---------------------------------------

RNAV (GPS) Z RWY 14

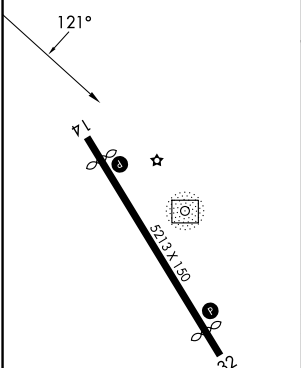
SAND POINT (SDP) (PASD)

RNP APCH-GPS.	MISSED APPROACH: Climbing right turn to 5000 on the RNAV missed approach route to DUGAC and hold.
Circling NA northeast of Rwy 14-32.	

AWOS-3P 134.85	ANCHORAGE CENTER 125.35 346.3	COLD BAY RADIO 122.3	UNICOM 122.8	CTAF 122.3
--------------------------	-----------------------------------------	--------------------------------	------------------------	----------------------



ELEV 24	D	TDZE 23
---------	----------	---------



MIRL Rwy 14-32

REIL Rwy 14 and 32

POSAE		tr 219°	REOIL	tr 289°	SETIE	tr 319°	DUGAC	
PREED	VGSIs and descent angles not coincident (VGSIs Angle 3.60/TCH 31).							
2900	092°	3.49° TCH 60	2300	121°	1080	1.1 NM to ORPIE	ORPIE	
6 NM		3.3 NM		1.1 NM	1.1 NM	0.5		
CATEGORY	A	B	C	D				
LP MDA	660-1	637 (700-1)	660-1¾	637 (700-1¾)				
LNAV MDA	820-1 797 (800-1)	820-1¼ 797 (800-1¼)	820-2½	797 (800-2½)				
CIRCLING	820-1 796 (800-1)	820-1¼ 796 (800-1¼)	1580-3 1556 (1600-3)	2240-3 2216 (2300-3)				

SAND POINT, ALASKA
Amdt 2 02DEC21

55°19'N-160°31'W

RNAV (GPS) Z RWY 14

AK, 19 MAR 2026 to 14 MAY 2026

AK, 19 MAR 2026 to 14 MAY 2026