

WAAS CH <b>58243</b> <b>W11A</b>	APP CRS <b>107°</b>	Rwy Ldg <b>3200</b> TDZE <b>992</b> Apt Elev <b>992</b>
--	------------------------	---

# RNAV (GPS) RWY 11

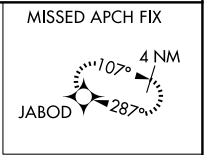
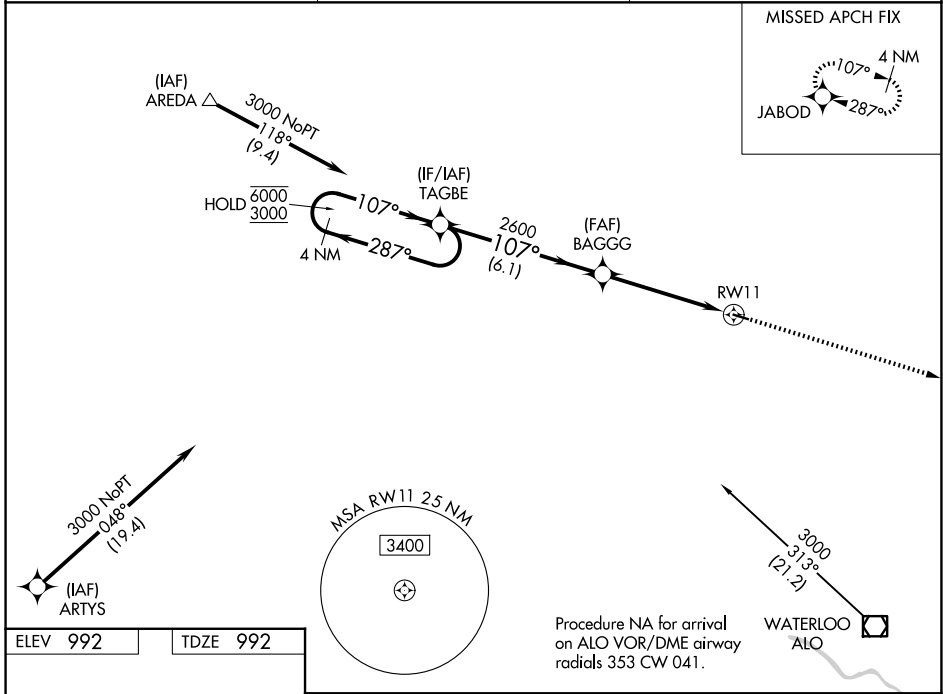
WAVERLY MUNI (C25)

RNP APCH.

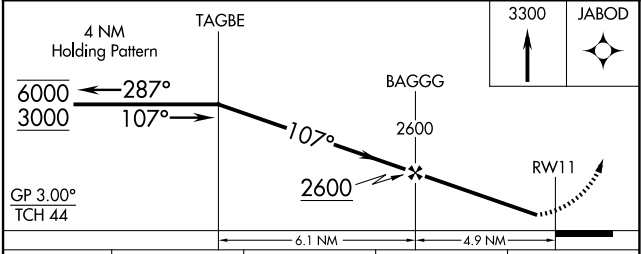
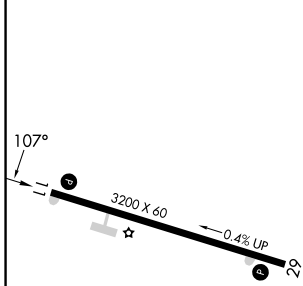
**⚠** Rwy 11 helicopter visibility reduction below 1 SM NA. Baro-VNAV NA.  
**⚠** NA Use Waterloo altimeter setting. Straight-in and Circling Rwy 11 NA at night.

MISSED APPROACH: Climb to 3300 direct JABOD and hold.

ALO ASOS <b>120.65</b>	DES MOINES APP CON * <b>118.9 251.15</b>	UNICOM <b>122.8 (CTAF)</b>
---------------------------	---	-------------------------------



ELEV 992	TDZE 992
----------	----------



CATEGORY	A	B	C	D
LPV DA	1287-1 295 (300-1)			NA
LNAV/VNAV DA	1334-1 342 (400-1)			NA
LNAV MDA	1540-1	548 (600-1)	1540-1½ 548 (600-1½)	NA
CIRCLING	1540-1 548 (600-1)	1620-1 628 (700-1)	1620-1¾ 628 (700-1¾)	NA

REIL Rwy 11 and 29 **Ⓛ**  
 MIRL Rwy 11-29 **Ⓛ**

NC-3, 19 MAR 2026 to 16 APR 2026

NC-3, 19 MAR 2026 to 16 APR 2026