

WAVERLY, IOWA

AL-6558 (FAA)

25275

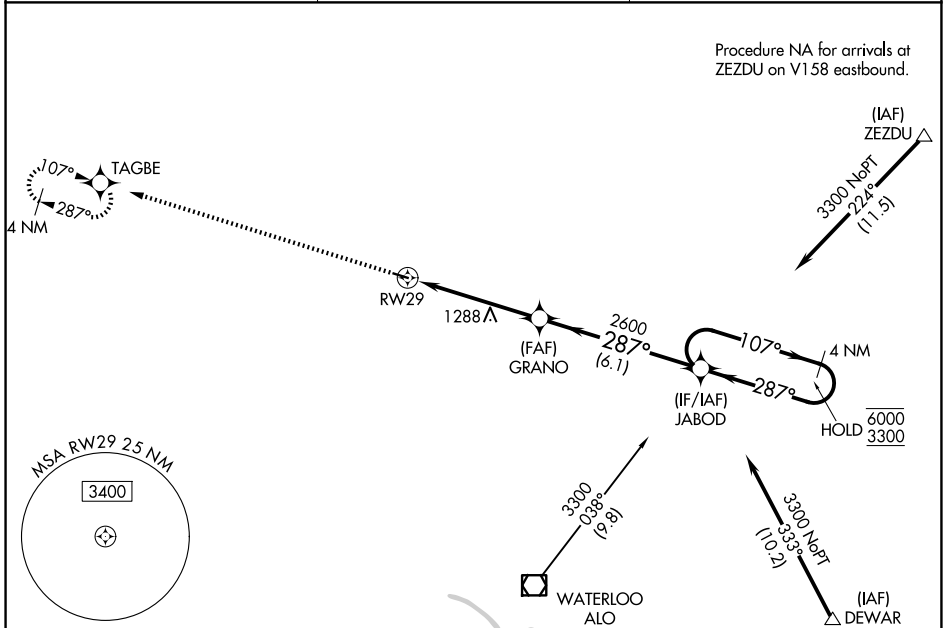
WAAS CH 78343 W29A	APP CRS 287°	Rwy Ldg TDZE Apt Elev	3200 992 992
--	------------------------	-----------------------------	---

RNAV (GPS) RWY 29

WAVERLY MUNI (C25)

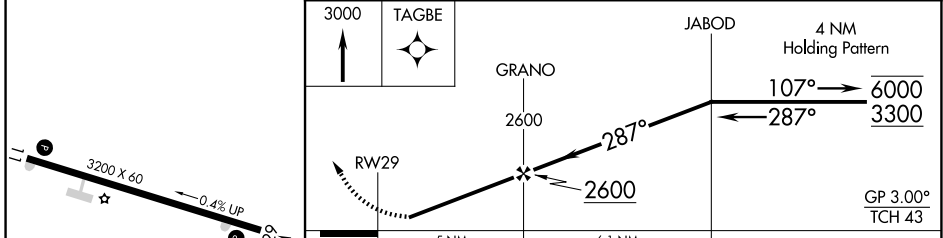
RNP APCH - GPS.	MISSED APPROACH: Climb to 3000 direct TAGBE and hold.
<p>▼ Circling to Rwy 11 NA at night. Rwy 29 helicopter visibility reduction below ¾ SM NA. Baro-VNAV NA. Use Waterloo altimeter setting.</p> <p>▲ NA</p>	

ALO ASOS 120.65	DES MOINES APP CON * 118.9 251.15	UNICOM 122.8 (CTAF) 0
---------------------------	---	---------------------------------



ELEV 992	TDZE 992
----------	----------

Procedure NA for arrival on ALO VOR/DME airway radials 308 CW 353.



	A	B	C	D
CATEGORY	A	B	C	D
LPV DA	1287-1 295 (300-1)			NA
LNAV/VNAV DA	1334-1 342 (400-1)			NA
LNAV MDA	1600-1	608 (700-1)	1600-1¾ 608 (700-1¾)	NA
CIRCLING	1600-1 608 (700-1)	1620-1 628 (700-1)	1620-1¾ 628 (700-1¾)	NA

REIL Rws 11 and 29 1
MIRL Rwy 11-29 1

WAVERLY, IOWA
Orig-A 11AUG22

42°45'N-92°30'W

RNAV (GPS) RWY 29

WAVERLY MUNI (C25)

NC-3, 19 MAR 2026 to 16 APR 2026

NC-3, 19 MAR 2026 to 16 APR 2026