

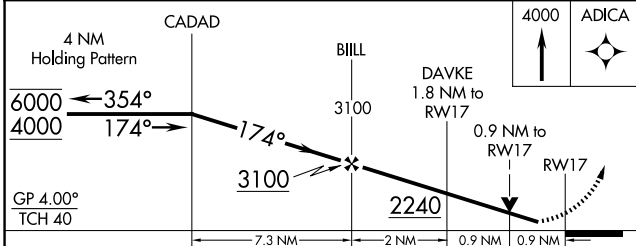
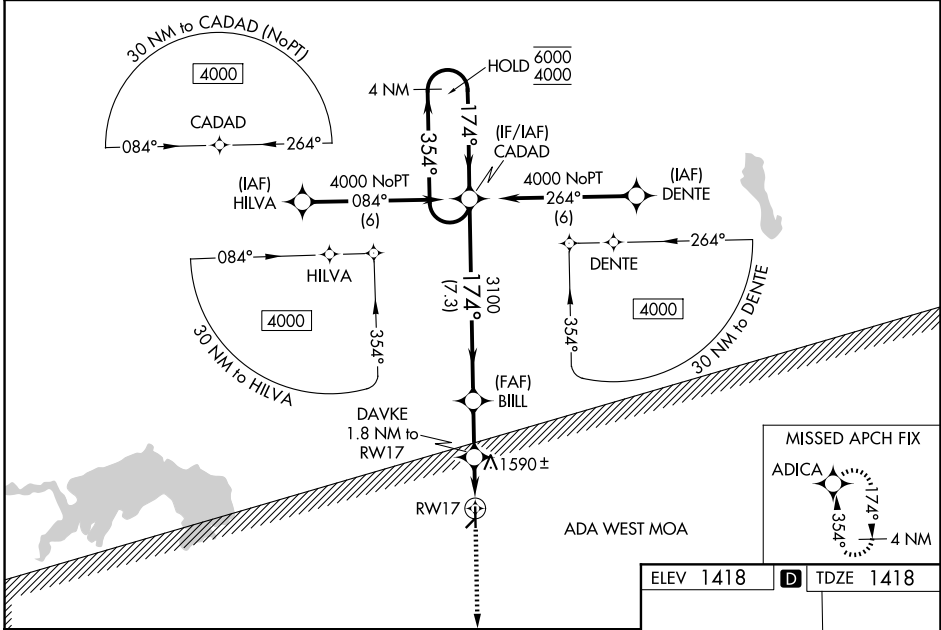
WAAS CH <b>42847</b> <b>W17A</b>	APP CRS <b>174°</b>	Rwy Ldg <b>4018</b> TDZE <b>1418</b> Apt Elev <b>1418</b>
--	------------------------	---

# RNAV (GPS) RWY 17

MORITZ MEML (K61)

RNP APCH - GPS.		MISSED APPROACH: Climb to 4000 direct ADICA and hold.
▽ ▲ NA	Rwy 17 helicopter visibility reduction below ¼ SM NA. For uncompensated Baro-VNAV systems, LNAV/VNAV NA below -17°C or above 54°C. Baro-VNAV and VDP NA when using CNK altimeter setting. Circling NA to Rwys 4 and 22. When local altimeter setting not received, use CNK altimeter setting and increase LPV DA to 1737 feet. Increase LNAV/VNAV DA to 1898 feet and all visibilities ½ SM. Increase all MDAs 60 feet.	

AWOS-3PT <b>118.225</b>	KANSAS CITY CENTER <b>134.9 363.2</b>	UNICOM <b>122.8 (CTAF) ①</b>
----------------------------	--	---------------------------------



ELEV 1418	TDZE 1418
4000 ADICA	174° Z1 5.7 X 0027 121 35
MIRL Rwy 17-35 ①	

CATEGORY	A	B	C	D
LPV DA	1679-1	261 (300-1)		NA
LNAV/VNAV DA	1840-1¼	422 (500-1¼)		NA
LNAV MDA	1840-1	422 (500-1)		NA
CIRCLING	1900-1 482 (500-1)	2260-1¼ 842 (900-1¼)		NA