

(MEARZ7.MEARZ) 23334

MEARZ SEVEN DEPARTURE

AL-6614 (FAA)

INDY SOUTH GREENWOOD (HFY)

INDIANAPOLIS, INDIANA

**TOP ALTITUDE:
ASSIGNED BY ATC**

RADAR required.

AWOS-3P

118.525

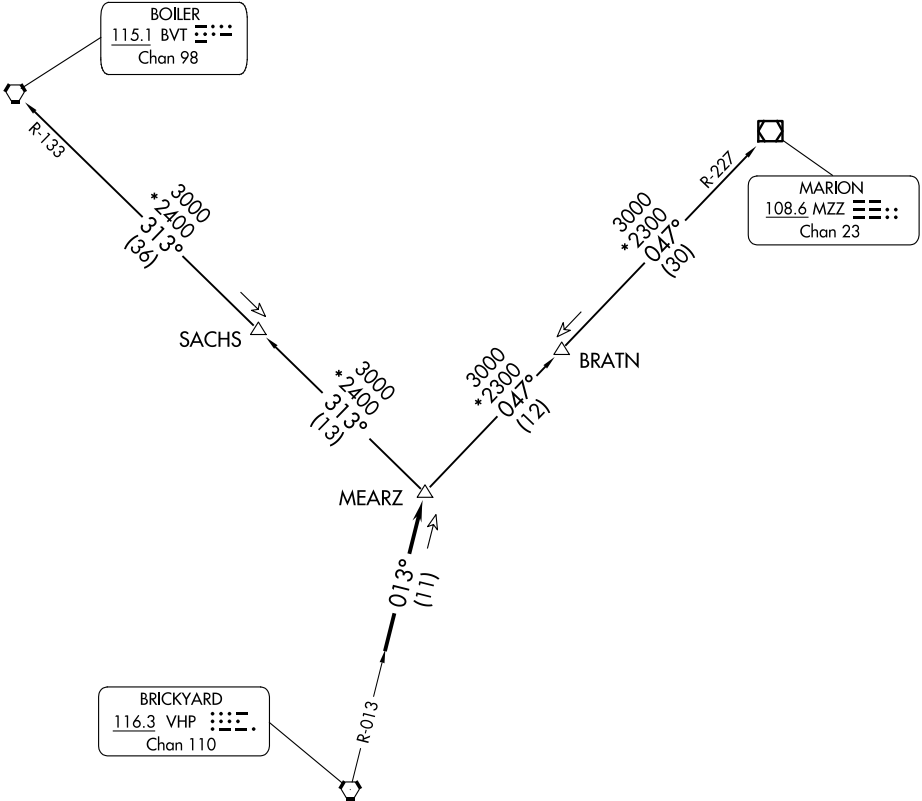
INDIANAPOLIS DEP CON

124.95 317.8

BOILER
115.1 BVT
Chan 98

MARION
108.6 MZZ
Chan 23

BRICKYARD
116.3 VHP
Chan 110



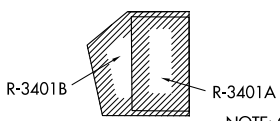
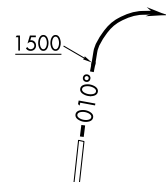
TAKEOFF MINIMUMS

Rwy 1, 19: Standard.

NOTE: Turbojets accelerate to 250K until reaching 10000, if unable advise ATC.

NOTE: Assigned to aircraft with a requested altitude of 11000 or above.

NOTE: Select appropriate localizer/DME frequency/channel prior to departure.



NOTE: Chart not to scale.

(NARRATIVE ON FOLLOWING PAGE)

EC-2, 19 MAR 2026 to 16 APR 2026

EC-2, 19 MAR 2026 to 16 APR 2026

MEARZ SEVEN DEPARTURE

(MEARZ7.MEARZ) 19MAY22

INDIANAPOLIS, INDIANA

INDY SOUTH GREENWOOD (HFY)



DEPARTURE ROUTE DESCRIPTION

TAKEOFF RUNWAY 1: Climb on heading on 010° to 1500 before turning right. Then on assigned heading to assigned altitude. Thence....

DEPARTING ALL OTHER AUTHORIZED RUNWAYS: Climb on assigned heading to assigned altitude. Thence....

....expect RADAR vectors to join VHP R-013 to MEARZ then on transition or assigned route. Expect clearance to requested altitude ten minutes after departure.

BOILER TRANSITION (MEARZ7.BVT): From over MEARZ on BVT R-133 to BVT VORTAC.

MARION TRANSITION (MEARZ7.MZZ): From over MEARZ on MZZ R-227 to MZZ VOR/DME.

EC-2, 19 MAR 2026 to 16 APR 2026

EC-2, 19 MAR 2026 to 16 APR 2026