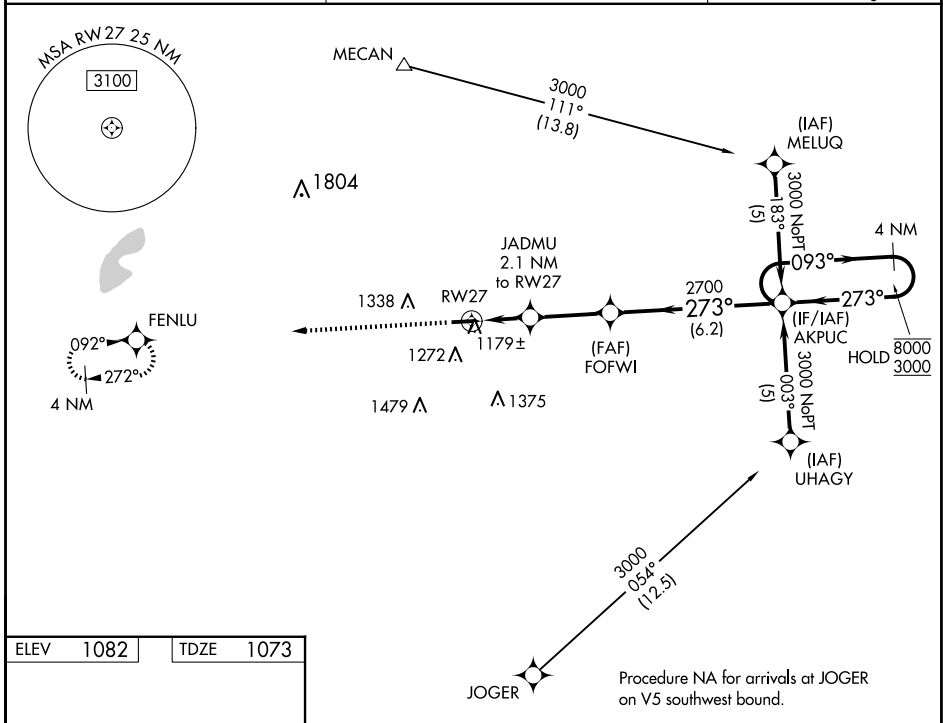


WAAS CH 61009 W27A	APP CRS 273°	Rwy Ldg TDZE Apt Elev	4000 1073 1082
--	------------------------	-----------------------------	---

RNAV (GPS) RWY 27

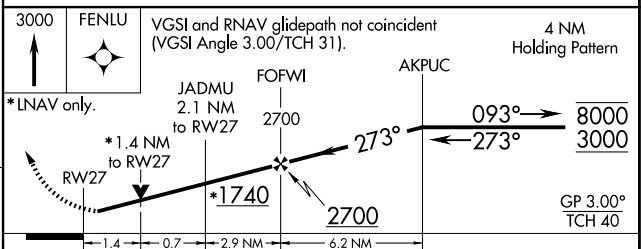
MADISON COUNTY (UYF)

RNP APCH - GPS		MISSED APPROACH: Climb to 3000 direct FENLU and hold.
<p>⚠ Rwy 27 helicopter visibility reduction below 3/4 SM NA. For uncompensated Baro-VNAV systems, LNAV/VNAV NA below -17°C or above 54°C.</p>		
AWOS-3PT 120.85	COLUMBUS APP CON 134.0 279.6	UNICOM 123.0 (CTAF) 0



ELEV 1082	TDZE 1073
-----------	-----------

REIL Rws 9 and 27 **0**
MIRL Rwy 9-27 **0**



CATEGORY	A	B	C	D
LPV DA	1400-1 1/4 327 (400-1 1/4)			
LNAV/VNAV DA	1449-1 1/2 376 (400-1 1/2)			
LNAV MDA	1540-1	467 (500-1)	1540-1 3/8 467 (500-1 3/8)	1540-1 1/2 467 (500-1 1/2)
CIRCLING	1600-1 518 (600-1)	1640-1 558 (600-1)	1640-1 1/2 558 (600-1 1/2)	1840-2 1/2 758 (800-2 1/2)