

WAAS CH 53409 W09A	APP CRS 093°	Rwy Ldg TDZE Apt Elev	4000 1082 1082
--	------------------------	-----------------------------	---

RNAV (GPS) RWY 9

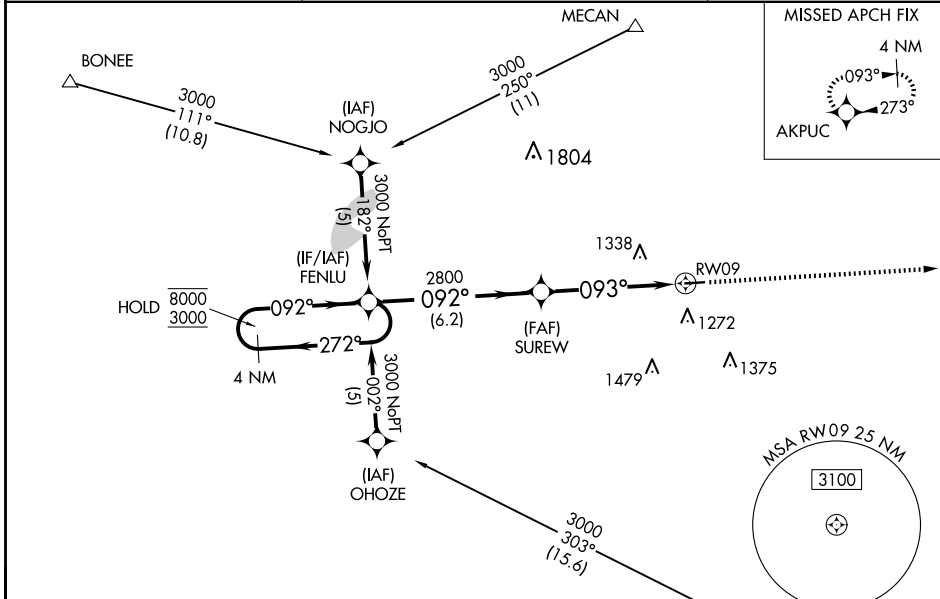
MADISON COUNTY (UYF)

RNP APCH - GPS.

⚠ For uncompensated Baro-VNAV systems, LNAV/VNAV NA below -17°C or above 54°C.

MISSED APPROACH: Climb to 3000 direct AKPUC and hold.

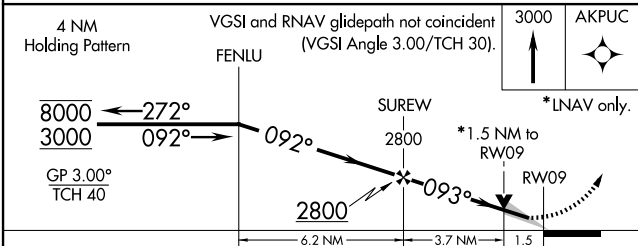
AWOS-3PT 120.85	COLUMBUS APP CON 134.0 279.6	UNICOM 123.0 (CTAF) 0
---------------------------	--	---------------------------------



ELEV 1082	TDZE 1082
-----------	-----------



Procedure NA for arrivals at JOGER on V5 northeast bound.



CATEGORY	A	B	C	D
LPV DA	1332-1 250 (300-1)			
LNAV/VNAV DA	1548-1 3/4 466 (500-1 3/4)			
LNAV MDA	1580-1	498 (500-1)	1580-1 1/2 498 (500-1 1/2)	1580-1 1/2 498 (500-1 1/2)
CIRCLING	1600-1 518 (600-1)	1640-1 558 (600-1)	1640-1 1/2 558 (600-1 1/2)	1840-2 1/2 758 (800-2 1/2)

REIL Rwy 9 and 27 **0**
MIRL Rwy 9-27 **0**

EC-2, 19 MAR 2026 to 16 APR 2026

EC-2, 19 MAR 2026 to 16 APR 2026