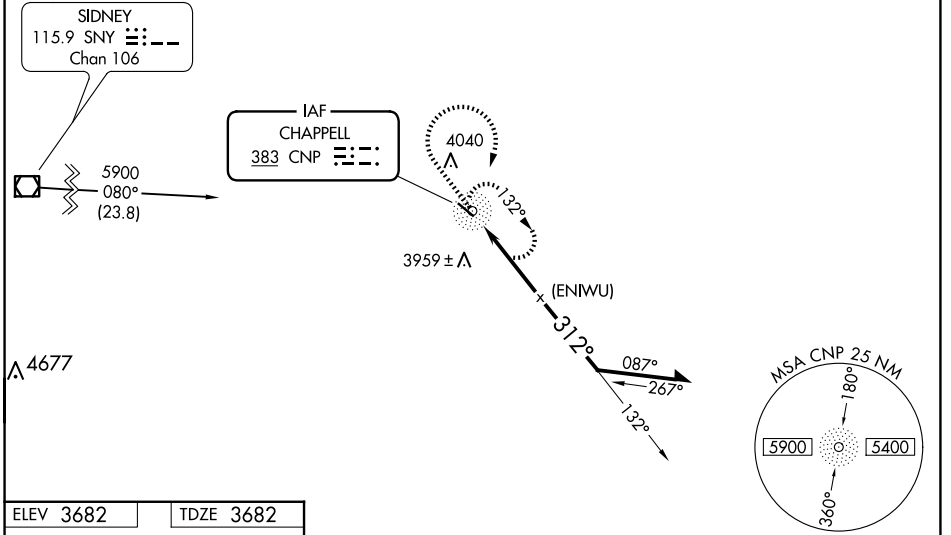


NDB CNP <b>383</b>	APP CRS <b>312°</b>	Rwy Idg TDZE Apt Elev	<b>3870</b> <b>3682</b> <b>3682</b>
-----------------------	------------------------	-----------------------------	---

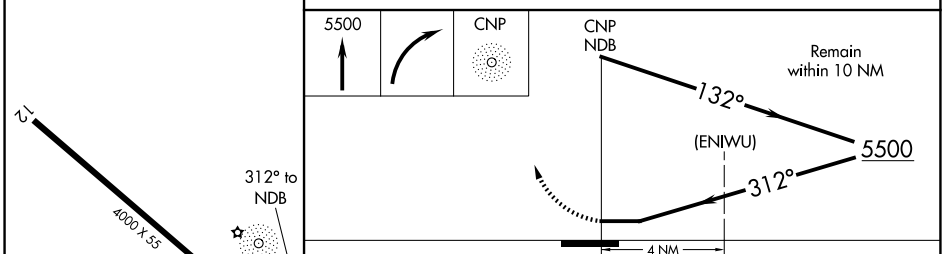
# NDB or GPS RWY 30

BILLY G RAY FLD (CNP)

<p><b>NA</b> Use Sidney altimeter setting, if not received, use Scottsbluff altimeter setting.</p>	<p>MISSED APPROACH: Climb to 5500 then right turn direct CNP NDB and hold.</p>
<p>DENVER CENTER <b>118.475 225.4</b></p>	<p>CTAF <b>122.9</b></p>



ELEV 3682	TDZE 3682
-----------	-----------



CATEGORY	A	B	C	D
S-30	4460-1 778 (800-1)	4460-1¼ 778 (800-1¼)	4460-2¼ 778 (800-2¼)	4460-2½ 778 (800-2½)
CIRCLING	4540-1 858 (900-1)	4540-1¼ 858 (900-1¼)	4540-2½ 858 (900-2½)	4600-3 918 (1000-3)
SCOTTSBLUFF ALTIMETER SETTING MINIMUMS				
S-30	4520-1 838 (900-1)	4520-1¼ 838 (900-1¼)	4520-2½ 838 (900-2½)	4520-2¾ 838 (900-2¾)
CIRCLING	4600-1¼ 918 (1000-1¼)	4600-2¾ 918 (1000-2¾)	4680-3 998 (1000-3)	4680-3 998 (1000-3)

MIRL Rwy 12-30  
CHAPPELL, NEBRASKA  
Amdt 2C 25MAR21

41°05'N-102°28'W

# NDB or GPS RWY 30

BILLY G RAY FLD (CNP)

NC-2, 19 MAR 2026 to 16 APR 2026

NC-2, 19 MAR 2026 to 16 APR 2026