

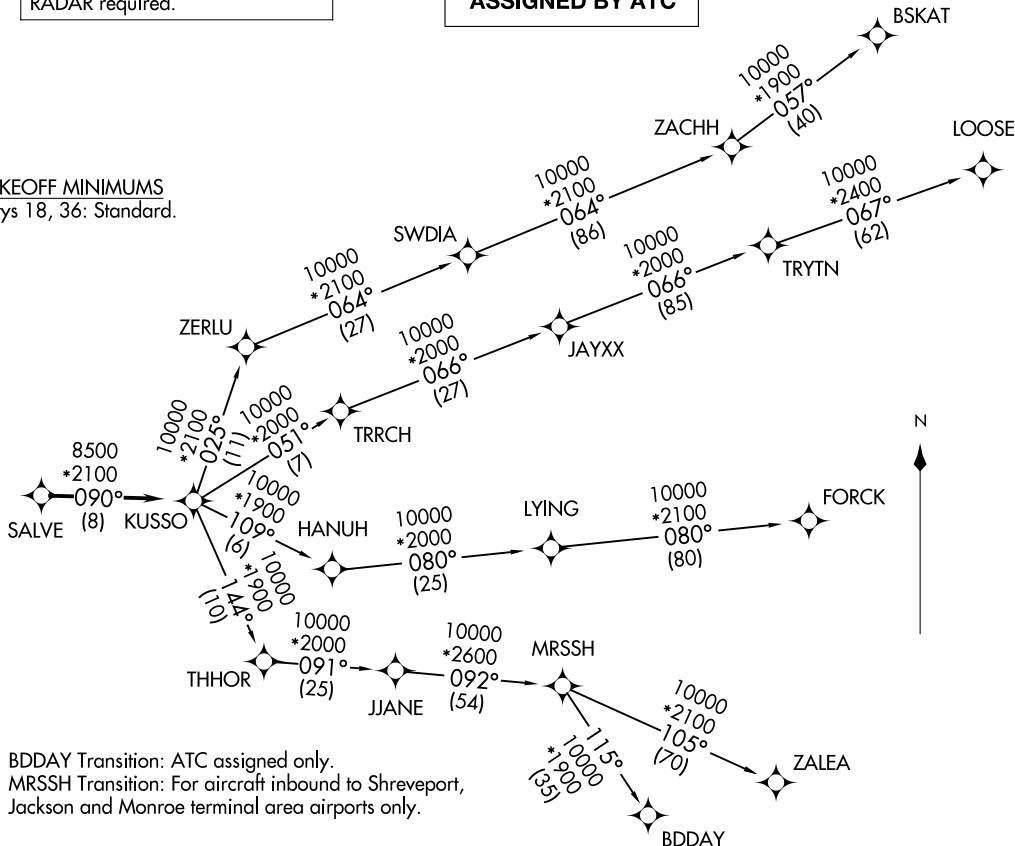
KUSSO TWO DEPARTURE (RNAV)
(KUSSO2.KUSSO) 22JAN26

LONE STAR DEP CON
124.3 282.275
CLNC DEL (When twr closed)
121.35
GND CON
121.875
MC KINNEY TOWER ★
118.825 (CTAF)

RNAV 1 - DME/DME/IRU or GPS.
RADAR required.

**TOP ALTITUDE:
ASSIGNED BY ATC**

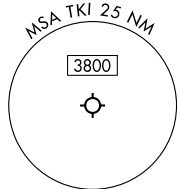
TAKEOFF MINIMUMS
Rwys 18, 36: Standard.



NOTE: BDDAY Transition: ATC assigned only.
NOTE: MRSSH Transition: For aircraft inbound to Shreveport, Jackson and Monroe terminal area airports only.

(CONTINUED ON FOLLOWING PAGE)

NOTE: Chart not to scale.



DALLAS, TEXAS
MCKINNEY NTL (TKI)

(KUSSO2.KUSSO) 26022
AL-6644 (FAA)

MCKINNEY NTL (TKI)
DALLAS, TEXAS

KUSSO TWO DEPARTURE (RNAV)



DEPARTURE ROUTE DESCRIPTION

When entering controlled airspace, fly heading assigned by ATC, expect vector to SALVE, then on track 090° to KUSSO, then on assigned transition. Maintain ATC assigned altitude, expect filed altitude 10 minutes after departure.

- BDDAY TRANSITION (KUSSO2.BDDAY)
- BSKAT TRANSITION (KUSSO2.BSKAT)
- FORCK TRANSITION (KUSSO2.FORCK)
- LOOSE TRANSITION (KUSSO2.LOOSE)
- MRSSH TRANSITION (KUSSO2.MRSSH)
- ZALEA TRANSITION (KUSSO2.ZALEA)

SC-2, 19 MAR 2026 to 16 APR 2026

SC-2, 19 MAR 2026 to 16 APR 2026