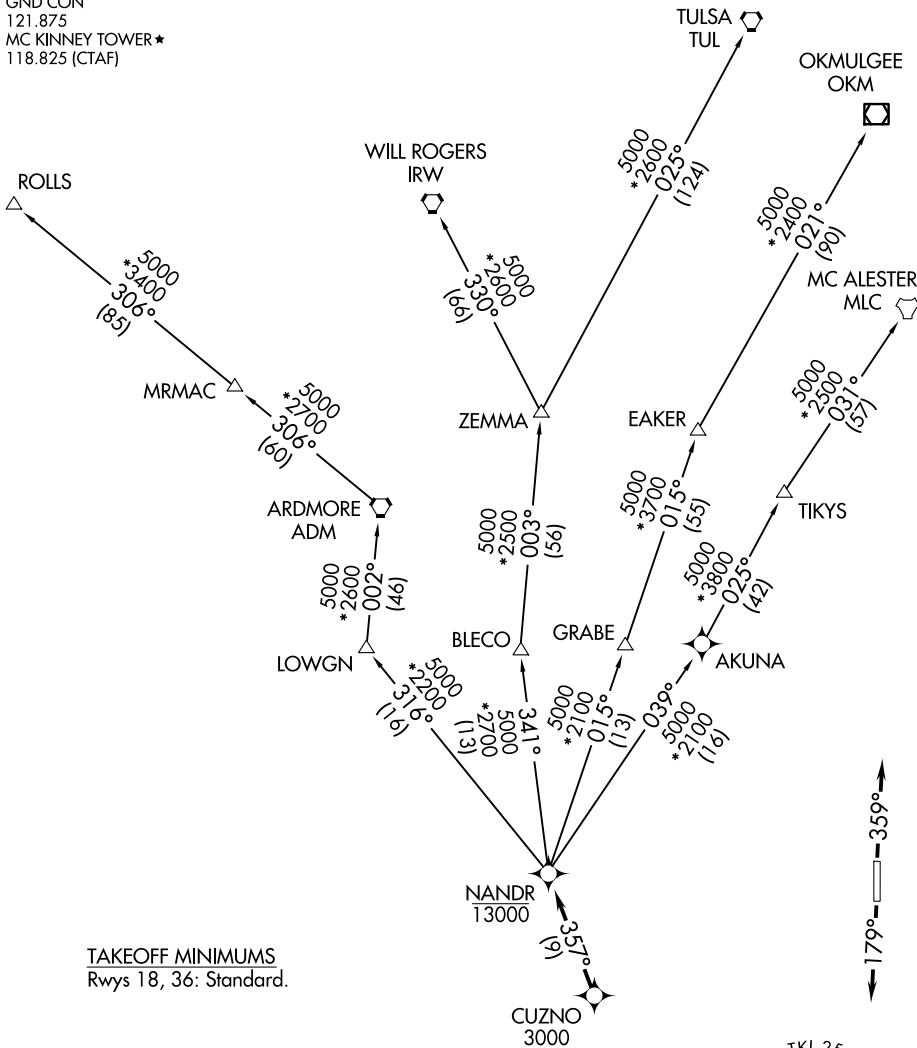


NANDR THREE DEPARTURE (RNAV)

LONE STAR DEP CON
 124.3 282.275
 CLNC DEL (When twr closed)
 121.35
 GND CON
 121.875
 MC KINNEY TOWER ★
 118.825 (CTAF)

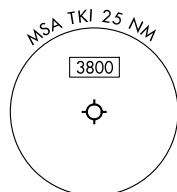
RNAV 1 - DME/DME/IRU or GPS.
 RADAR required.

**TOP ALTITUDE:
 ASSIGNED BY ATC**



TAKEOFF MINIMUMS
 Rwys 18, 36: Standard.

NOTE: EAKER Transition: For TUL terminal arrivals only.
 NOTE: TULSA Transition: For all aircraft overflying TUL VORTAC.
 NOTE: Aircraft arriving to the Oklahoma City terminal area,
 file and expect the ZEMMA enroute transition.



NOTE: Chart not to scale.

(CONTINUED ON FOLLOWING PAGE)

NANDR THREE DEPARTURE (RNAV)

SC-2, 19 MAR 2026 to 16 APR 2026

SC-2, 19 MAR 2026 to 16 APR 2026

NANDR THREE DEPARTURE (RNAV)



DEPARTURE ROUTE DESCRIPTION

TAKEOFF RUNWAY 18: Climb on heading 179° or as assigned by ATC, thence. . .
TAKEOFF RUNWAY 36: Climb on heading 359° or as assigned by ATC, thence. . .

. . .expect RADAR vectors to cross CUZNO at or above 3000, then on track 357°
to cross NANDR at or below 13000, then on assigned transition.

- EAKER TRANSITION (NANDR3.EAKER)
- MC ALESTER TRANSITION (NANDR3.MLC)
- OKMULGEE TRANSITION (NANDR3.OKM)
- ROLLS TRANSITION (NANDR3.ROLLS)
- TULSA TRANSITION (NANDR3.TUL)
- WILL ROGERS TRANSITION (NANDR3.IRW)
- ZEMMA TRANSITION (NANDR3.ZEMMA)

SC-2, 19 MAR 2026 to 16 APR 2026

SC-2, 19 MAR 2026 to 16 APR 2026