

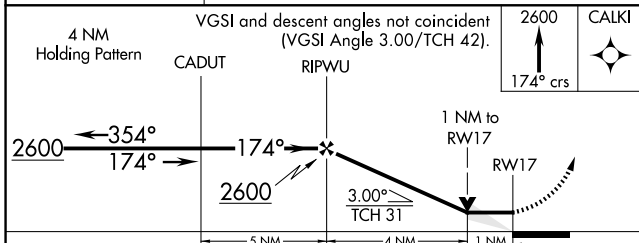
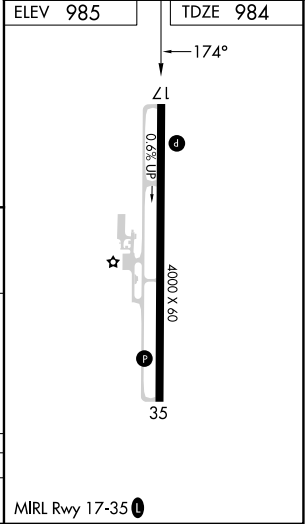
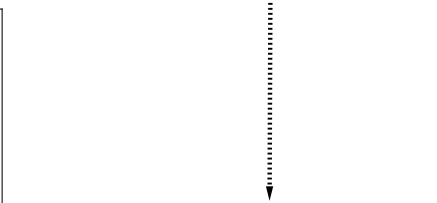
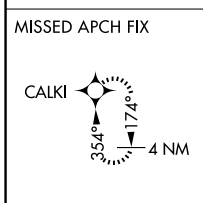
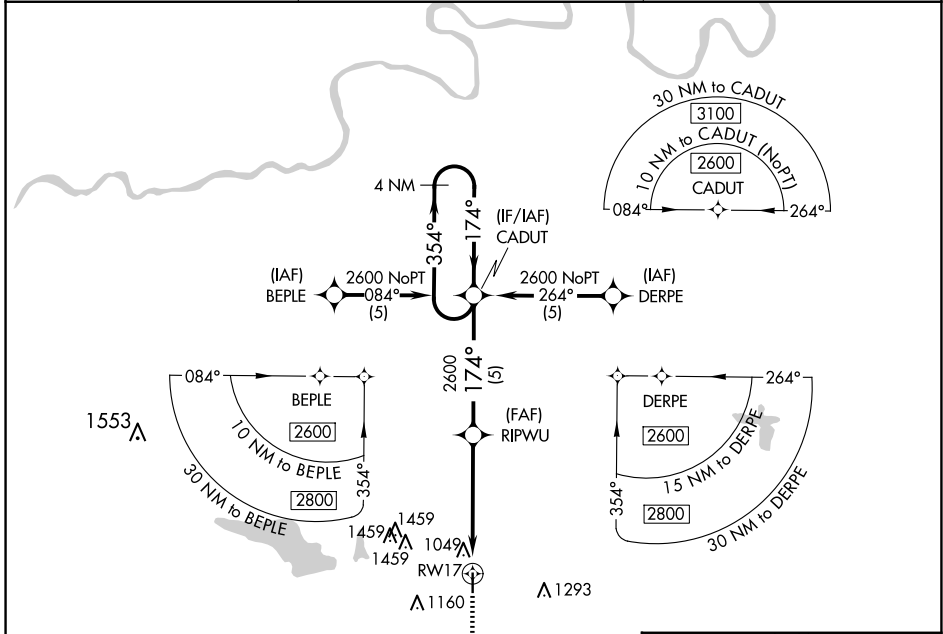
| | | |
|-------------|----------|-------------|
| APP CRS | Rwy Idg | 4000 |
| 174° | TDZE | 984 |
| | Apt Elev | 985 |

RNAV (GPS) RWY 17

CHANDLER RGNL (CQB)

| | |
|--|--|
| RNP APCH. | MISSED APPROACH: Climb to 2600 via 174° course to CALKI WP and hold. |
| <p>▼ When local altimeter setting not received, use Shawnee altimeter setting and increase all MDA 80 feet; increase LNAV Cat C visibility $\frac{1}{8}$ SM.</p> <p>▲</p> | |

| | | |
|----------------------------|--|----------------------|
| AWOS-3PT 119.275 | KANSAS CITY CENTER 127.8 319.1 | CTAF 122.9 |
|----------------------------|--|----------------------|



| | | | | |
|----------|--------|-------------|---|----|
| CATEGORY | A | B | C | D |
| LNAV MDA | 1300-1 | 316 (400-1) | | NA |

SC-1, 19 MAR 2026 to 16 APR 2026

SC-1, 19 MAR 2026 to 16 APR 2026