

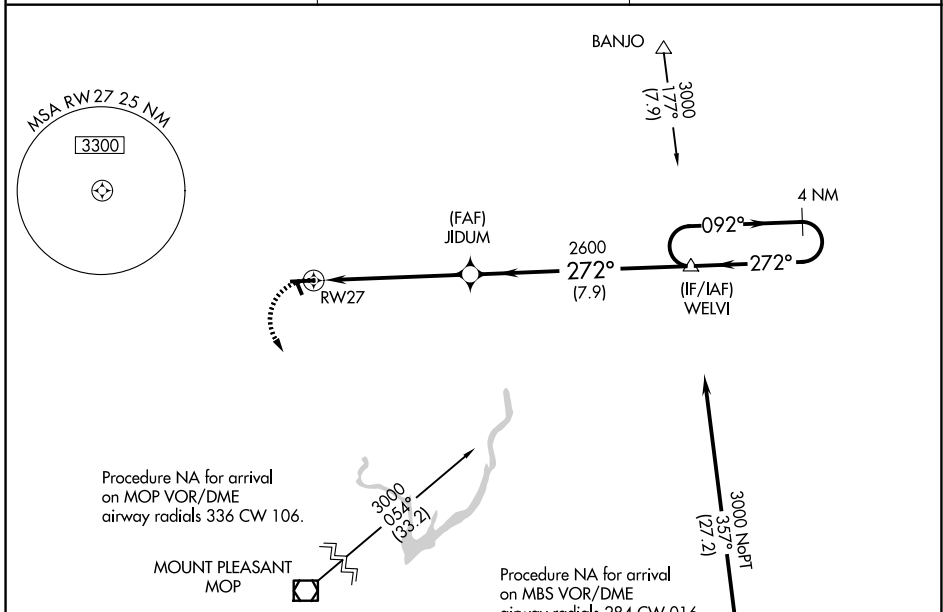
WAAS CH <b>99326</b> <b>W27A</b>	APP CRS <b>272°</b>	Rwy Ldg <b>4699</b> TDZE <b>773</b> Apt Elev <b>774</b>
--	------------------------	---

# RNAV (GPS) RWY 27

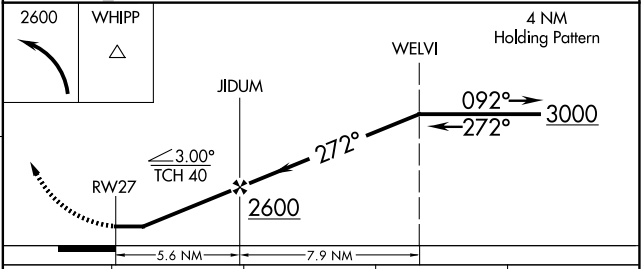
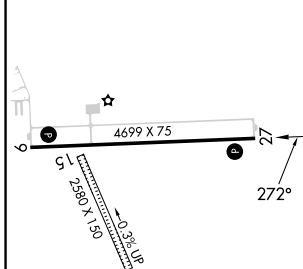
GLADWIN ZETTEL MEML (GDW)

RNP APCH - GPS.	<p>⚠ Circling NA to Rwys 15 and 33. Rwy 27 helicopter visibility reduction below 1 SM NA.                  Procedure NA at night. Use Mount Pleasant altimeter setting; when not received, use Midland altimeter setting and increase all MDA 20 feet; increase LP and LNAV Cats C/D visibility 1/8 SM.</p>	<p>MISSED APPROACH:                  Climbing left turn to 2600 direct WHIPP and hold.</p>
-----------------	---	--

AWOS-3PT <b>118,975</b>	GREAT LAKES APP CON * <b>126.45 235.625</b>	UNICOM <b>122.8 (CTAF)</b>
----------------------------	--	-------------------------------



ELEV <b>774</b>	TDZE <b>773</b>
-----------------	-----------------



CATEGORY	A	B	C	D
LP MDA	1280-1	507 (600-1)	1280-1 3/8	507 (600-1 3/8)
LNAV MDA	1280-1	507 (600-1)	1280-1 3/8	507 (600-1 3/8)
CIRCLING	1420-1 646 (700-1)	1500-1 726 (800-1)	1520-2 1/4 746 (800-2 1/4)	1700-3 926 (1000-3)

MIRL Rwy 9-27  
 REIL Rwy 9 and 27

EC-1, 19 MAR 2026 to 16 APR 2026

EC-1, 19 MAR 2026 to 16 APR 2026