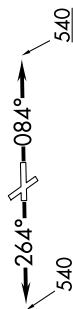


HOODO SEVEN DEPARTURE (RNAV)

SC-5, 19 MAR 2026 to 16 APR 2026

CTAF  
122.7  
HOUSTON DEP CON  
134.45 284.0



N

SCHOLES  
VUH



NOTE: RNAV 1.

NOTE: RADAR required.

NOTE: ATC assigned only.

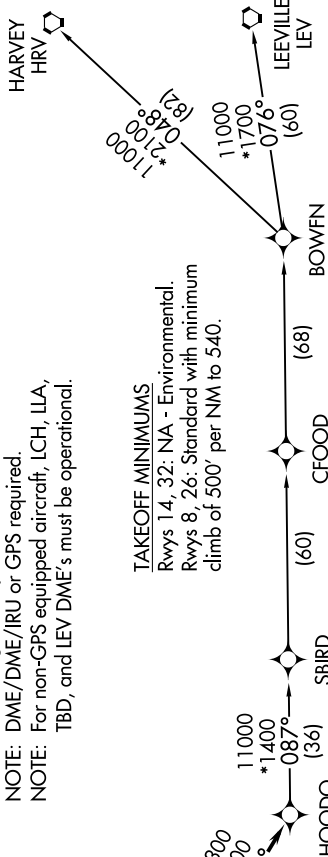
NOTE: DME/DME/IRU or GPS required.

NOTE: For non-GPS equipped aircraft, LCH, LLA, TBD, and LEV DME's must be operational.

TAKEOFF MINIMUMS

Rwys 14, 32: NA - Environmental.  
Rwys 8, 26: Standard with minimum climb of 500' per NM to 540.

**TOP ALTITUDE:  
ASSIGNED BY ATC**



NOTE: Chart not to scale.

**DEPARTURE ROUTE DESCRIPTION**

TAKEOFF RUNWAY 8: Climb on heading 084° to 540, for RADAR vectors to VUH VOR/DME, thence . . . .  
TAKEOFF RUNWAY 26: Climb on heading 264° to 540, for RADAR vectors to VUH VOR/DME, thence . . . .

. . . . on track 118° to HOODO, then on (transition). Maintain ATC assigned altitude.  
Expect filed altitude 10 minutes after departure.

- BOWFN TRANSITION (HOODO7.BOWFN)
- CFOOD TRANSITION (HOODO7.CFOOD)
- HARVEY TRANSITION (HOODO7.HRV)
- LEEVILLE TRANSITION (HOODO7.LEV)
- SBIRD TRANSITION (HOODO7.SBIRD)

SC-5, 19 MAR 2026 to 16 APR 2026