

| | | |
|--|------------------------|---|
| WAAS CH 78335 W14A | APP CRS 143° | Rwy Idg 4400 TDZE 1798 Apt Elev 1800 |
|--|------------------------|---|

RNAV (GPS) RWY 14

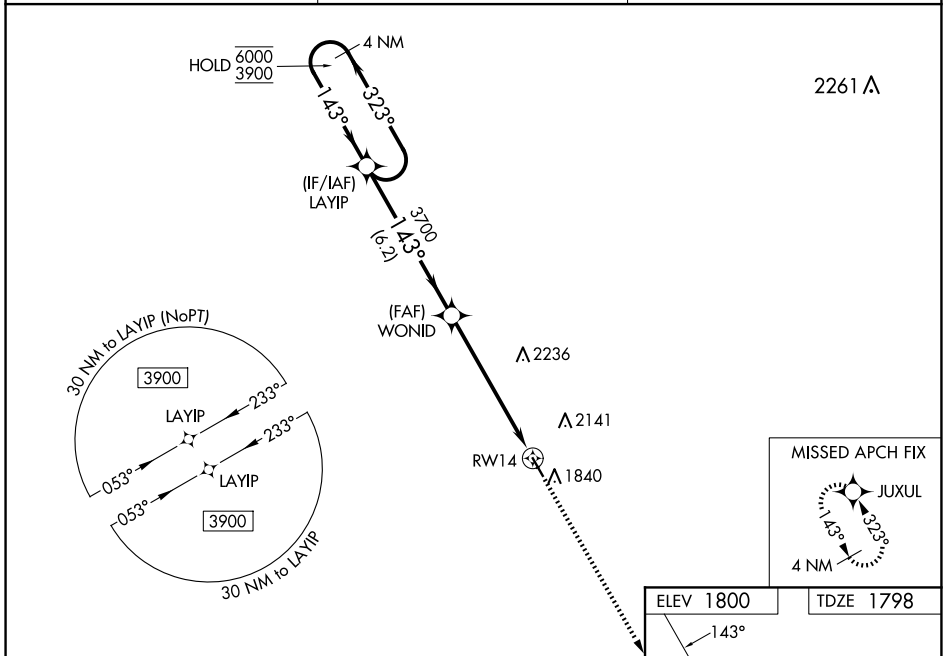
SMITH CENTER MUNI (K82)

RNP APCH - GPS.

⚠ For uncompensated Baro-VNAV systems, LNAV/VNAV NA below -18°C or above 54°C. Baro-VNAV and VDP NA when using CNK altimeter setting. When local altimeter setting not received, use CNK altimeter setting: increase LPV DA to 2172 feet; increase LNAV/VNAV DA to 2250 and all visibilities $\frac{3}{8}$ SM; increase all MDAs 180 feet and Circling all Cats visibility $\frac{1}{2}$ SM.

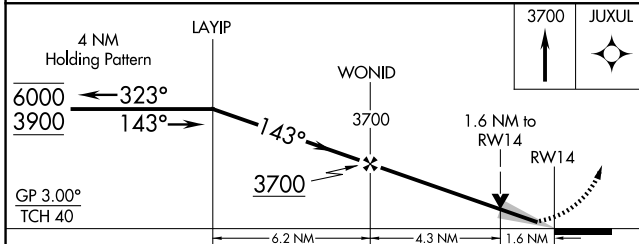
MISSED APPROACH: Climb to 3700 direct JUXUL and hold.

| | | |
|---------------------------|--|---------------------------------|
| AWOS-3PT 118.45 | MINNEAPOLIS CENTER 119.4 278.8 | UNICOM 122.8 (CTAF) 0 |
|---------------------------|--|---------------------------------|



NC-2, 19 MAR 2026 to 16 APR 2026

NC-2, 19 MAR 2026 to 16 APR 2026



| CATEGORY | A | B | C | D |
|-------------------|-----------------------|-----------------------|---|----|
| LPV DA | 1998-1 | 200 (200-1) | | NA |
| LNAV/VNAV DA | 2076-1 | 278 (300-1) | | NA |
| LNAV MDA | 2320-1 | 522 (600-1) | | NA |
| C CIRCLING | 2480-1 680 (700-1) | 2580-1 780 (800-1) | | NA |

