

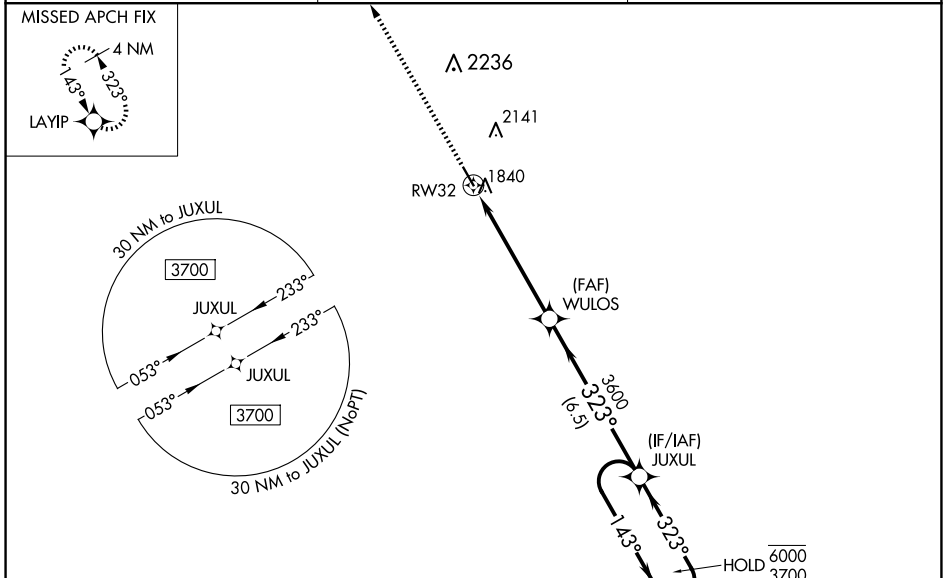
WAAS CH 63135 W32A	APP CRS 323°	Rwy Idg 4400 TDZE 1800 Apt Elev 1800
--	------------------------	---

RNAV (GPS) RWY 32

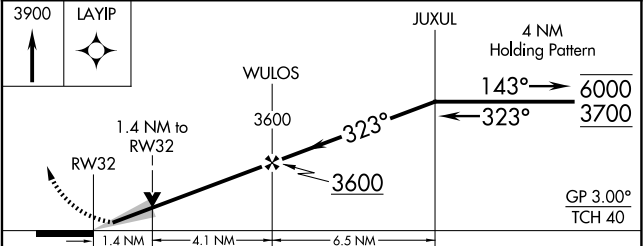
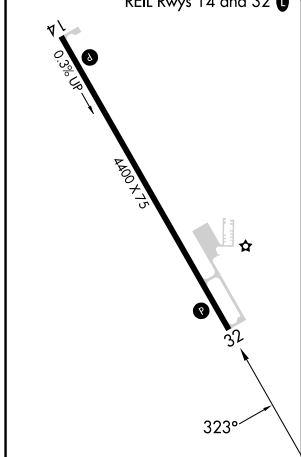
SMITH CENTER MUNI (K82)

RNP APCH - GPS.	MISSED APPROACH: Climb to 3900 direct LAYIP and hold.
<p>⚠ Baro-VNAV and VDP NA when using CNK altimeter setting. For uncompensated Baro-VNAV systems, LNAV/VNAV NA below -18°C or above 54°C. When local altimeter setting not received, use CNK altimeter setting: increase LPV DA to 2174 feet; increase LNAV/VNAV DA to 2224 feet and all visibilities ¼ SM; increase all MDAs 180 feet, and Circling all visibilities ½ SM.</p>	

AWOS-3PT 118.45	MINNEAPOLIS CENTER 119.4 278.8	UNICOM 122.8 (CTAF) 0
---------------------------	--	---------------------------------



ELEV 1800	TDZE 1800
MIRL Rwy 14-32	
REIL Rws 14 and 32	



CATEGORY	A	B	C	D
LPV DA	2000-1	200 (200-1)		NA
LNAV/VNAV DA	2050-1	250 (300-1)		NA
LNAV MDA	2300-1	500 (500-1)		NA
C CIRCLING	2480-1 680 (700-1)	2580-1 780 (800-1)		NA

NC-2, 19 MAR 2026 to 16 APR 2026

NC-2, 19 MAR 2026 to 16 APR 2026