

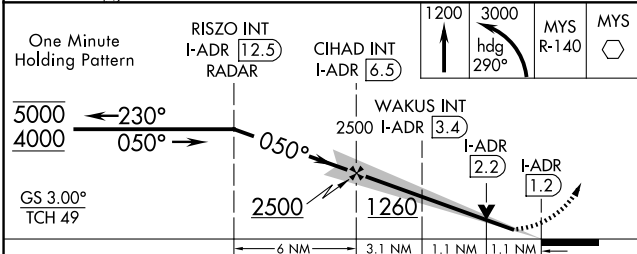
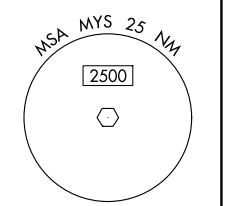
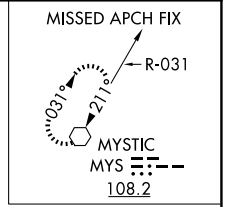
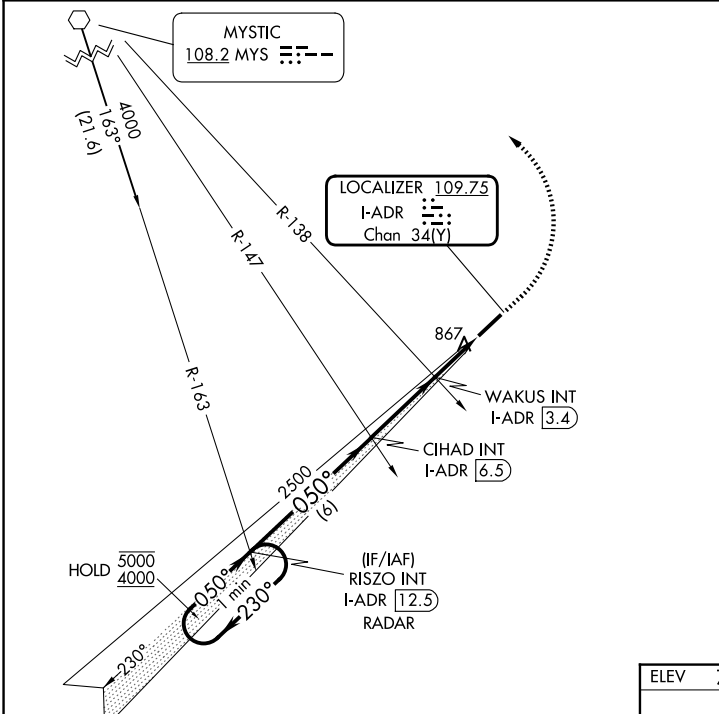
LOC/DME I-ADR 109.75 Chan 34(Y)	APP CRS 050°	Rwy Ldg TDZE Apt Elev 6001 768 776
---	------------------------	--

ILS or LOC RWY 5

ADDINGTON FLD (EKK)

⚠ MISSED APPROACH: Climb to 1200 then climbing left turn to 3000 on heading 290° and MYS R-140 to MYS VOR and hold.

AWOS-3 118.55	LOUISVILLE APP CON 123.675 327.0	CLNC DEL 119.45	UNICOM 123.075 (CTAF) ①
-------------------------	--	---------------------------	--



ELEV	776	TDZE	768
<p>MIRL Rwy 5-23 ① REIL Rwy 5 and 23 ①</p>			
FAF to MAP 5.3 NM			
Knots	60	90	120 150 180
Min:Sec	5:18	3:32	2:39 2:07 1:46

CATEGORY	A	B	C	D
S-ILS 5	968-3/4		200 (200-3/4)	
S-LOC 5	1260-1	492 (500-1)	1260-1 3/8	492 (500-1 3/8)
CIRCLING	1260-1	484 (500-1)	1420-1 3/4 644 (700-1 3/4)	1760-3 984 (1000-3)
WAKUS FIX MINIMUMS (DUAL VOR RECEIVERS OR DME REQUIRED)				
S-LOC 5	1140-1 372 (400-1)			
CIRCLING	1240-1 464 (500-1)	1260-1 484 (500-1)	1420-1 3/4 644 (700-1 3/4)	1760-3 984 (1000-3)

SE-1, 19 MAR 2026 to 16 APR 2026

SE-1, 19 MAR 2026 to 16 APR 2026