

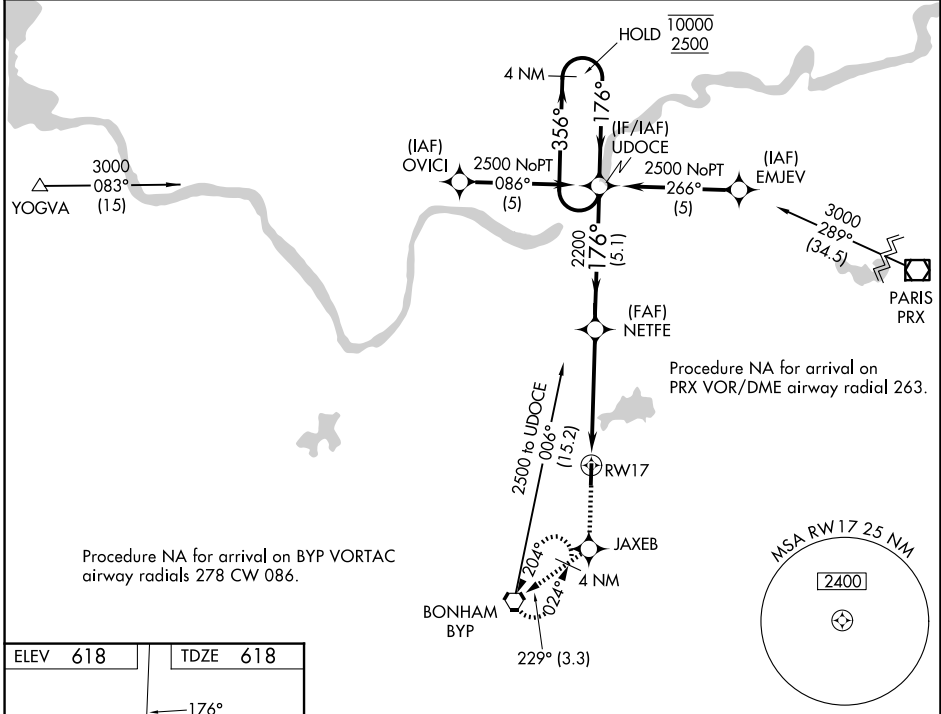
WAAS CH 99523 W17A	APP CRS 176°	Rwy Ldg TDZE Apt Elev	4000 618 618
--	------------------------	-----------------------------	---

RNAV (GPS) RWY 17

JONES FLD (F00)

RNP APCH - GPS.	MISSED APPROACH: Climb to 2500 direct JAXEB and on track 229° to BYP VORTAC and hold.
<p>▼ Rwy 17 helicopter visibility reduction below 1 SM NA. Baro-VNAV NA.</p> <p>▲ When local altimeter setting not received, use Durant altimeter setting.</p>	

AWOS-3 PT 118.05	FORT WORTH CENTER 124.875 370.95	UNICOM 122.8(CTAF) 0
----------------------------	--	--------------------------------



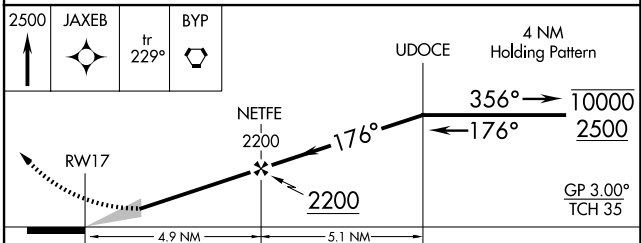
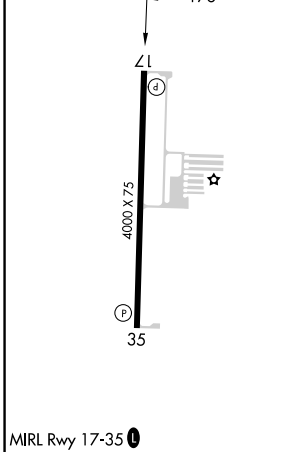
Procedure NA for arrival on BYP VORTAC airway radials 278 CW 086.

Procedure NA for arrival on PRX VOR/DME airway radial 263.

SC-2, 19 MAR 2026 to 16 APR 2026

SC-2, 19 MAR 2026 to 16 APR 2026

ELEV 618	TDZE 618
----------	----------



CATEGORY	A	B	C	D
LPV DA	906-1	288 (300-1)		NA
LNAV/VNAV DA	1030-1½	412 (500-1½)		NA
LNAV MDA	1180-1	562 (600-1)		NA
CIRCLING	1240-1 622 (700-1)	1400-1 782 (800-1)		NA