

APP CRS	Rwy Ldg	3222
088°	TDZE	465
	Apt Elev	465

RNAV (GPS) Y RWY 9

BRANDYWINE RGNL (OQN)

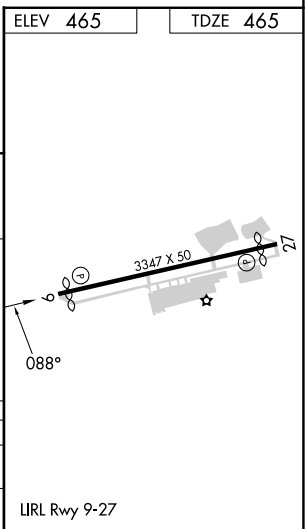
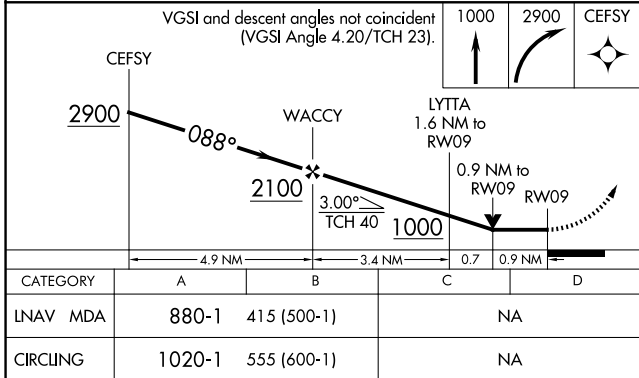
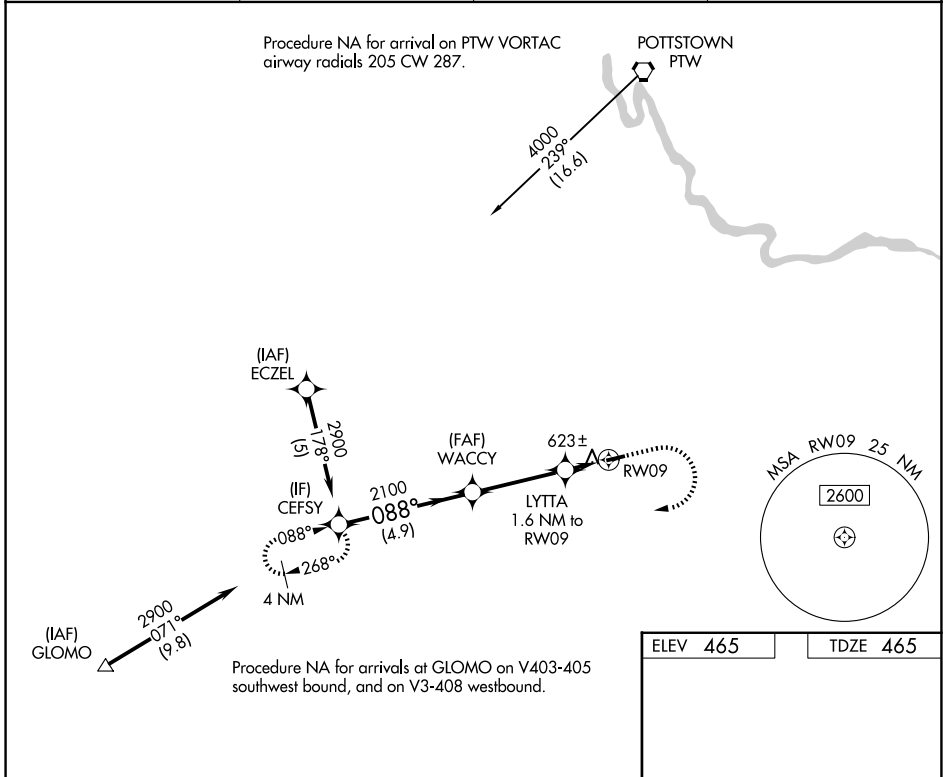
RNP APCH - GPS.

▼ Rwy 9 helicopter visibility reduction below 3/4 SM NA. When local altimeter setting not received, use Coatesville altimeter setting and increase all MDAs 60 feet.

▲

MISSED APPROACH: Climb to 1000 then climbing right turn to 2900 direct CEFSY and hold.

AWOS-3T 121.4	PHILADELPHIA APP CON 124.35 319.15	CLNC DEL 125.6	UNICOM 123.075 (CTAF)
-------------------------	--	--------------------------	---------------------------------



NE-4, 19 MAR 2026 to 16 APR 2026

NE-4, 19 MAR 2026 to 16 APR 2026