

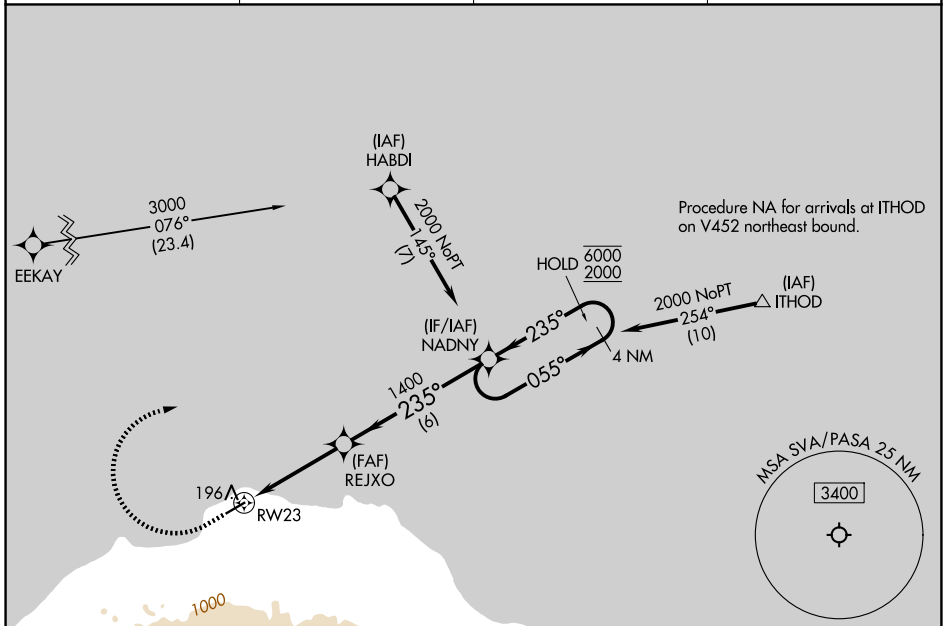
APP CRS	Rwy Ldg	4400
235°	TDZE	58
	Apt Elev	59

RNAV (GPS) RWY 23

SAVOONGA (SVA) (PASA)

RNP APCH - GPS.		MISSED APPROACH: Climb to 510 then climbing right turn to 2000 direct NADNY and hold.	
Circling NA southeast of Rwy 5-23.			

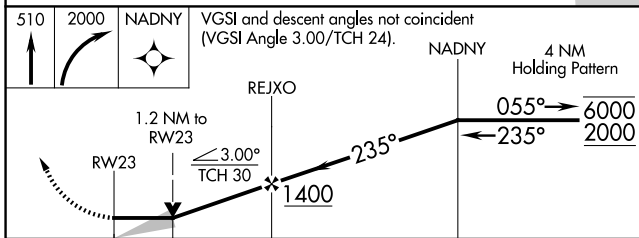
AWOS-3P 121.3	ANCHORAGE CENTER 132.2 281.4	NOME RADIO 122.3	CTAF 122.7
-------------------------	--	----------------------------	----------------------



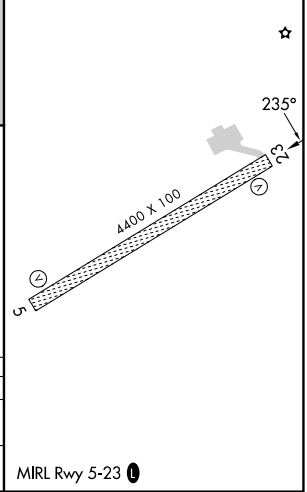
AK, 19 MAR 2026 to 14 MAY 2026

AK, 19 MAR 2026 to 14 MAY 2026

ELEV 59	TDZE 58
---------	---------



CATEGORY	A	B	C	D
LNAV MDA	460-1	402 (500-1)	460-1 1/8	402 (500-1 1/8)
CIRCLING	520-1	461 (500-1)	780-2 721 (800-2)	1100-3 1041 (1100-3)



MIRL Rwy 5-23