

VOR/DME ULL <b>117.3</b> Chan 120	APP CRS <b>229°</b>	Rwy Ldg TDZE Apt Elev	<b>4400</b> <b>58</b> <b>59</b>
---	------------------------	-----------------------------	---------------------------------------

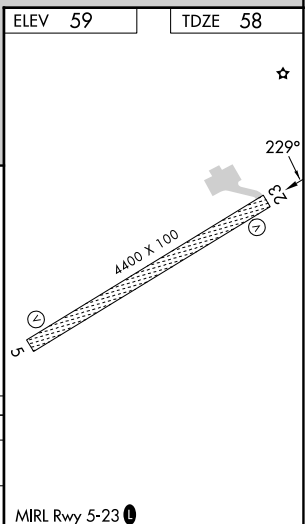
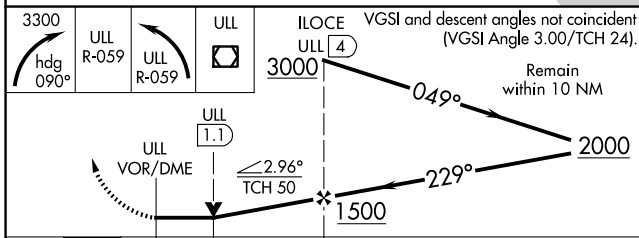
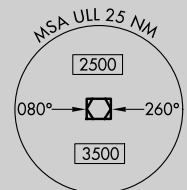
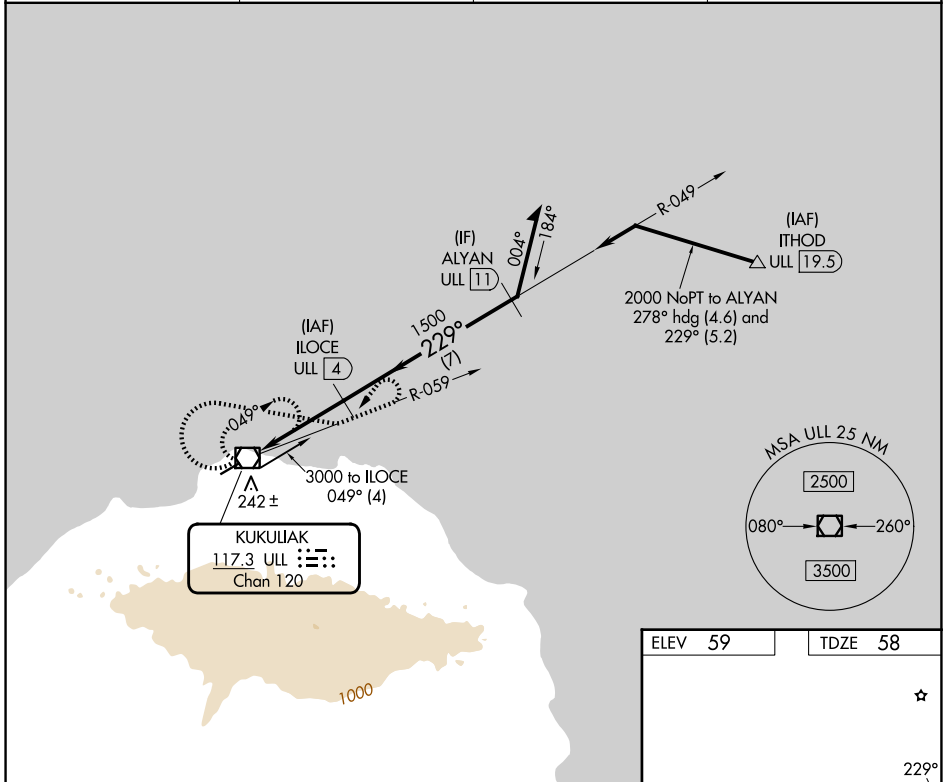
# VOR/DME RWY 23

SAVOONGA (SVA) (PASA)

**⚠** VDP NA when using GAM/PAGM altimeter setting. Circling NA southeast of Rwy 5-23. When local altimeter setting not received, use GAM/PAGM altimeter setting and increase all MDAs 100 feet; increase S-23 Cat C/D visibility ¼ SM and Circling Cat C visibility ½ SM.

**MISSED APPROACH:** Climbing right turn to 3300 on heading 090° and on ULL VOR/DME R-059 then left turn on ULL VOR/DME R-059 to ULL VOR/DME and hold.

AWOS-3P <b>121.3</b>	ANCHORAGE CENTER <b>132.2 281.4</b>	NOME RADIO <b>122.3</b>	CTAF <b>122.7</b>
-------------------------	--	----------------------------	----------------------



CATEGORY	A	B	C	D
S-23	600-1 542 (600-1)	600-1½ 542 (600-1½)	600-1¾ 542 (600-1¾)	600-2 542 (600-2)
CIRCLING	600-1 541 (600-1)	780-2 721 (800-2)	1160-3 1101 (1200-3)	

AK, 19 MAR 2026 to 14 MAY 2026

AK, 19 MAR 2026 to 14 MAY 2026