

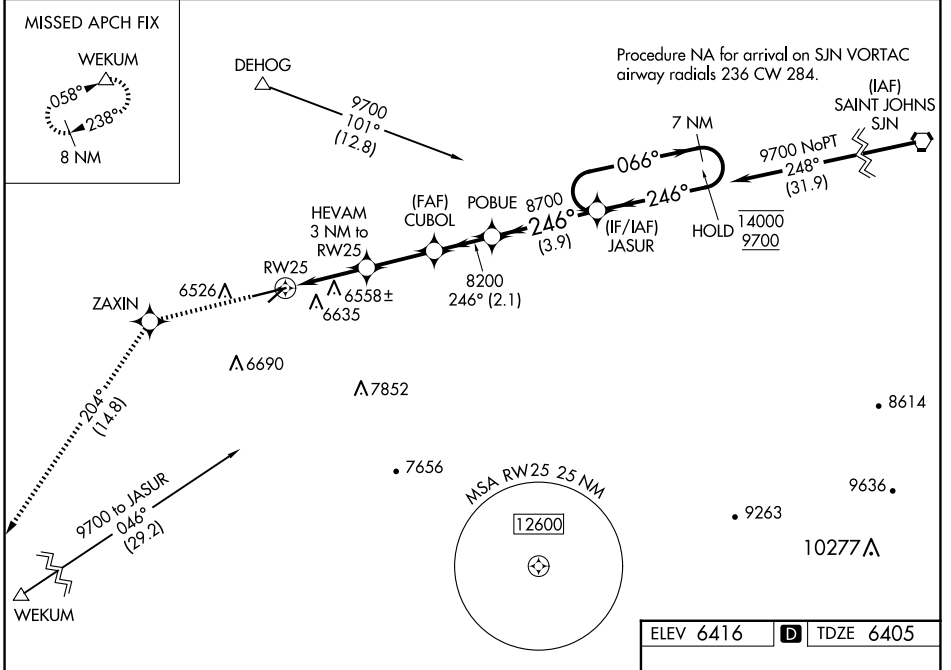
WAAS CH <b>72718</b> <b>W25A</b>	APP CRS <b>246°</b>	Rwy Ldg TDZE Apt Elev	<b>7200</b> <b>6405</b> <b>6416</b>
--	------------------------	-----------------------------	---

# RNAV (GPS) RWY 25

SHOW LOW RGNL (SOW)

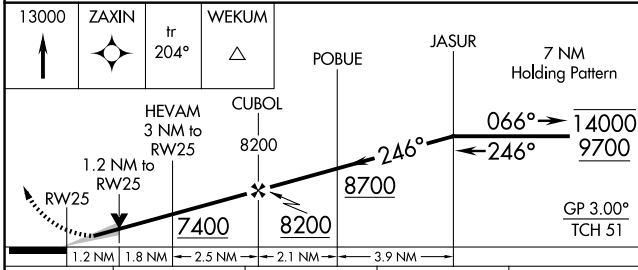
RNP APCH-GPS.	MISSED APPROACH: Climb to 13000 direct ZAXIN and on track 204° to WEKUM and hold, continue climb-in-hold to 13000.
<p><b>⚠</b> Circling NA southeast of Rws 4 and 25. Circling Rwy 4 NA at night.</p> <p><b>⚠</b> For uncompensated Baro-VNAV systems, LNAV/VNAV NA below -15°C or above 54°C.</p>	

AWOS-3 <b>118.075</b>	ALBUQUERQUE CENTER <b>132.9 239.05</b>	UNICOM <b>123.0 (CTAF) 0</b>
--------------------------	---	---------------------------------



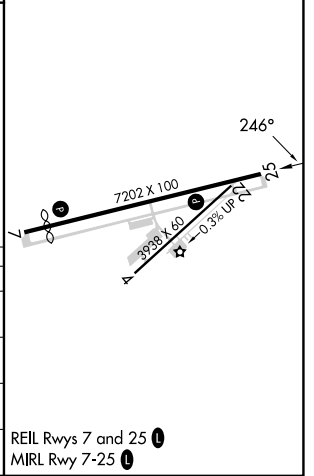
SW-4, 19 MAR 2026 to 16 APR 2026

SW-4, 19 MAR 2026 to 16 APR 2026



ELEV 6416	<b>D</b>	TDZE 6405
-----------	----------	-----------

CATEGORY	A	B	C	D
LPV DA		6605-3/4	200 (200-3/4)	
LNAV/VNAV DA		6704-7/8	299 (300-7/8)	
LNAV MDA	6820-1	415 (500-1)	6820-1 1/8	415 (500-1 1/8)
<b>C</b> CIRCLING	6840-1 424 (500-1)	6880-1 464 (500-1)	7180-2 1/4 764 (800-2 1/4)	7340-3 924 (1000-3)



REIL Rws 7 and 25 **0**  
MRL Rwy 7-25 **0**