

KUSSO TWO DEPARTURE (RNAV)
(KUSSO2.KUSSO) 22JAN26

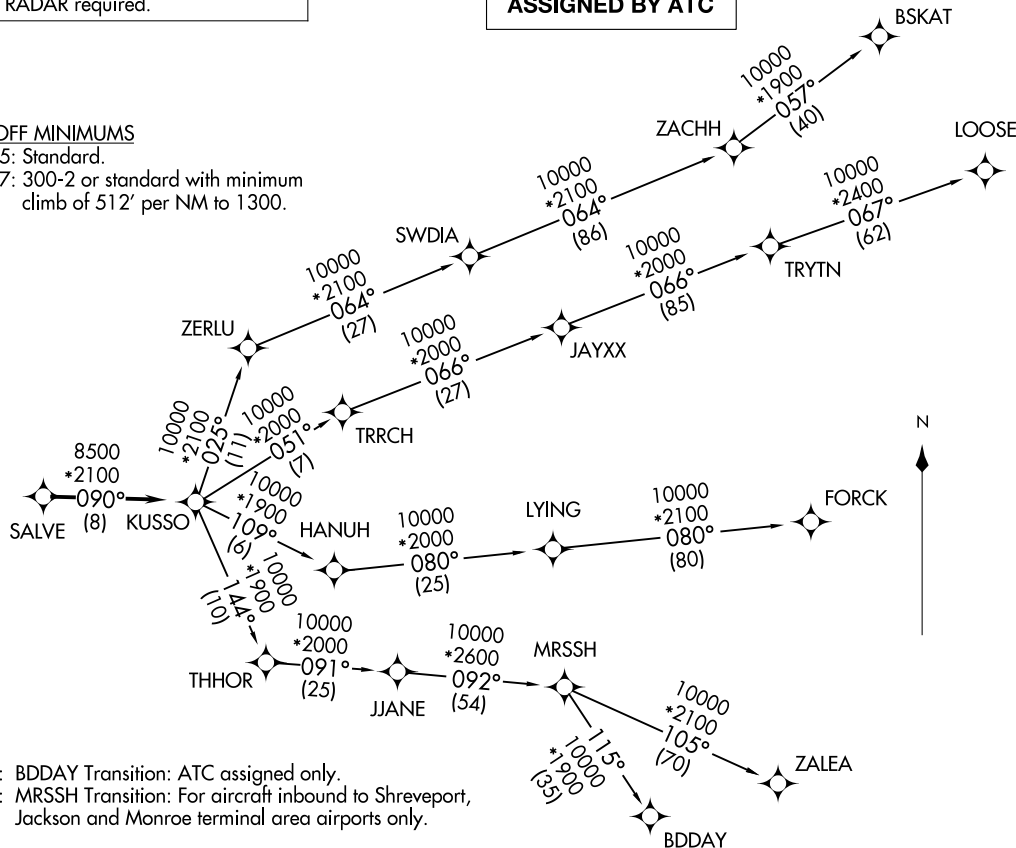
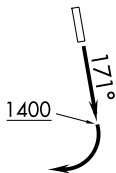
LONE STAR DEP CON
135.975 379.9
CTAF
123.0

RNAV 1 - DME/DME/IRU or GPS.
RADAR required.

**TOP ALTITUDE:
ASSIGNED BY ATC**

TAKEOFF MINIMUMS

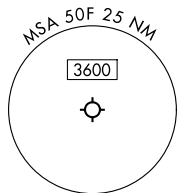
Rwy 35: Standard.
Rwy 17: 300-2 or standard with minimum
climb of 512' per NM to 1300.



NOTE: BDDAY Transition: ATC assigned only.
NOTE: MRSSH Transition: For aircraft inbound to Shreveport,
Jackson and Monroe terminal area airports only.

(CONTINUED ON FOLLOWING PAGE)

NOTE: Chart not to scale.



FORT WORTH, TEXAS
BOURLAND FLD (50F)

(KUSSO2.KUSSO) 26022
KUSSO TWO DEPARTURE (RNAV)

AL-6854 (FAA)

BOURLAND FLD (50F)
FORT WORTH, TEXAS

KUSSO TWO DEPARTURE (RNAV)



DEPARTURE ROUTE DESCRIPTION

TAKEOFF RUNWAY 17: Climb on heading 171° to 1400 before turning right.

When entering controlled airspace, fly heading assigned by ATC, expect vector to SALVE, then on track 090° to KUSSO, then on assigned transition. Maintain ATC assigned altitude, expect filed altitude 10 minutes after departure.

- BDDAY TRANSITION (KUSSO2.BDDAY)
- BSKAT TRANSITION (KUSSO2.BSKAT)
- FORCK TRANSITION (KUSSO2.FORCK)
- LOOSE TRANSITION (KUSSO2.LOOSE)
- MRSSH TRANSITION (KUSSO2.MRSSH)
- ZALEA TRANSITION (KUSSO2.ZALEA)

SC-2, 19 MAR 2026 to 16 APR 2026

SC-2, 19 MAR 2026 to 16 APR 2026