

WAAS CH 86333 W09A	APP CRS 095°	Rwy Ldg TDZE Apt Elev	5200 4086 4094
--	------------------------	-----------------------------	---

RNAV (GPS) RWY 9

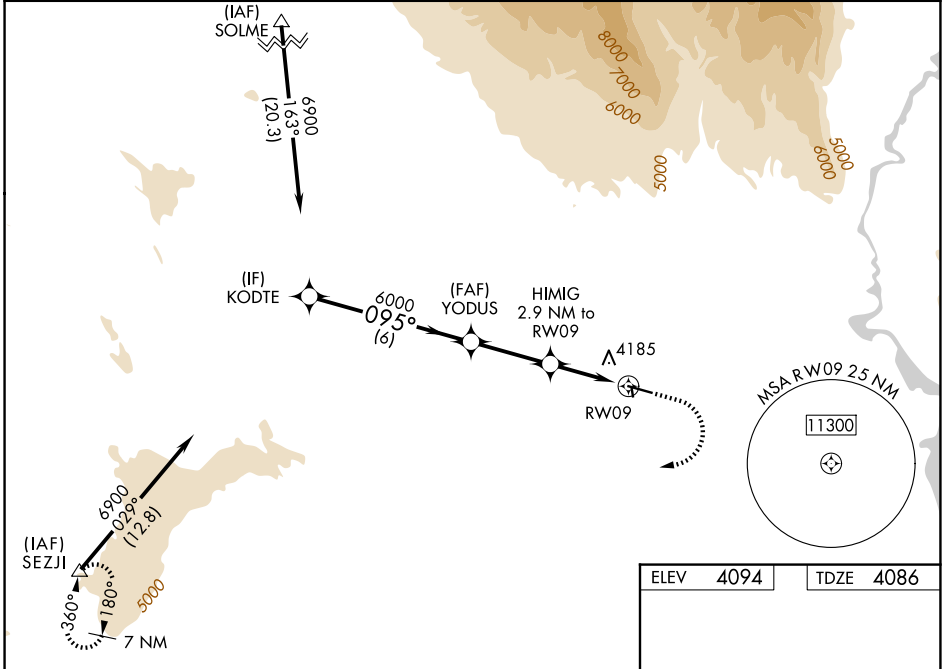
NORTH BIG HORN COUNTY (U68)

RNP APCH - GPS

Baro-VNAV NA when using Greybull altimeter setting. For uncompensated Baro-VNAV systems, LNAV/VNAV NA below -23°C or above 49°C. When Rwy 9 VGSI inop, Straight-in and Circling minimums NA at night. Helicopter visibility reduction below 1 SM NA. When local altimeter setting not received, use Greybull altimeter setting and increase all DA 87 feet and all LPV and LNAV/VNAV visibility 1/8 mile, increase all MDA 100 feet and LNAV Cats C/D visibility 3/8 mile and increase Circling Cat C visibility 1/4 mile. Circling NA to Rwy 16 and 34.

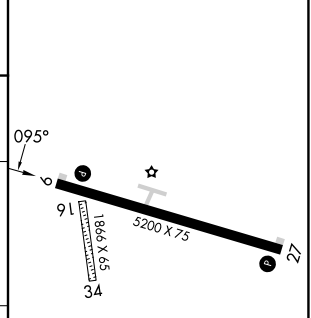
MISSED APPROACH: Climb to 4600 then climbing right turn to 8500 direct SEZJI and hold.

AWOS-3 119.925	SALT LAKE CENTER 133.25 285.6	UNICOM 123.0 (CTAF)
--------------------------	---	-------------------------------



VGSI and RNAV glidepath not coincident (VGSI Angle 3.00/TCH 40).		4600	8500	SEZJI
KODTE		↑	↷	△
6900	095°	6000	HIMIG 2.9 NM to RW09	* LNAV only.
GP 3.00°		* 5060	RW09	
TCH 55				
6 NM		2.9 NM	2.9 NM	
CATEGORY	A	B	C	D
LPV DA		4336-1	250 (300-1)	
LNAV/VNAV DA		4344-1	258 (300-1)	
LNAV MDA		4440-1	354 (400-1)	
CIRCLING	4520-1 426 (500-1)	4680-1 586 (600-1)	4940-2 1/2 846 (900-2 1/2)	5260-3 1166 (1200-3)

ELEV	4094	TDZE	4086
------	------	------	------



REIL Rwy 9 and 27	⬇
MIRL Rwy 9-27	⬇

NW-1, 19 MAR 2026 to 16 APR 2026

NW-1, 19 MAR 2026 to 16 APR 2026