


LOC/DME I-EVW 108.9 Chan 26	APP CRS 234°	Rwy Ldg TDZE Apt Elev	7300 7143 7143
--	------------------------	-----------------------------	---


ILS or LOC/DME RWY 23

EVANSTON-UINTA COUNTY BURNS FLD (E V W)

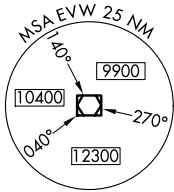
⚠ For inoperative MALSR, increase S-LOC 23 Cat D visibility to 1 mile. When local altimeter setting not received, procedure NA.

MALSR 

MISSED APPROACH: Climb to 7600 then climbing left turn to 12000 via EVW VOR/DME R-213 to COOLI/EVW VOR/DME 16.6 DME and hold, continue climb-in-hold to 12000.

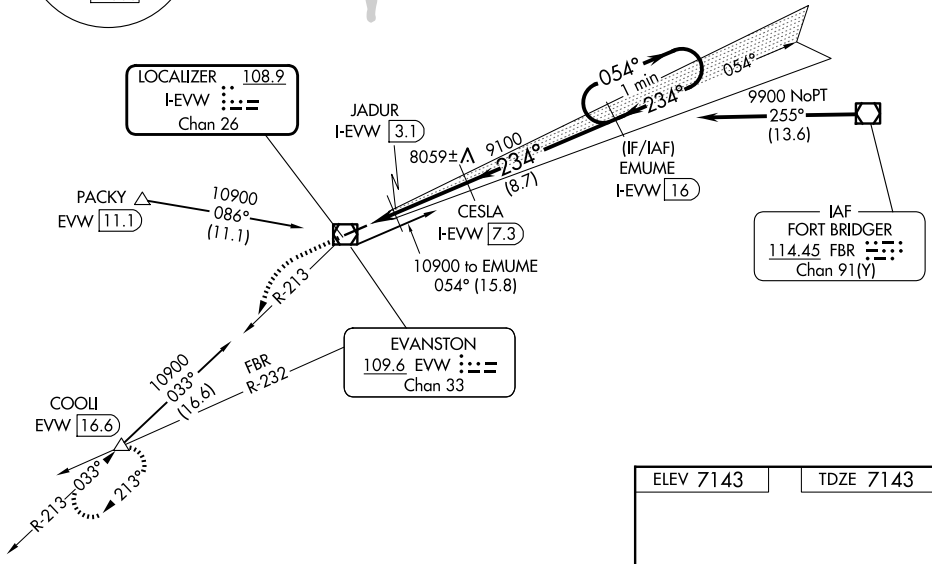
ASOS 120.0	SALT LAKE CENTER 127.7 354.125	GCO 121.72	UNICOM 123.0 (CTAF) 
----------------------	--	----------------------	---

Procedure NA for arrivals at FBR VOR/DME via airway radials 213 CW 285.

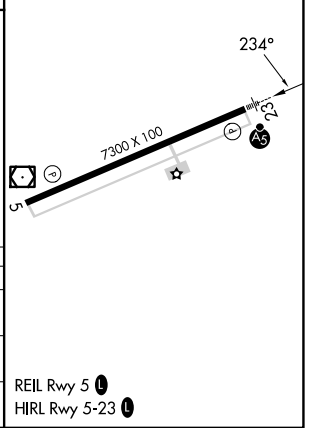
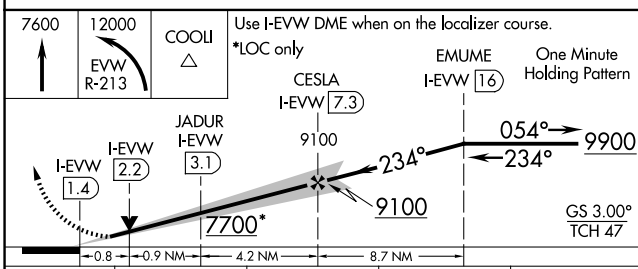


NW-1, 19 MAR 2026 to 16 APR 2026

NW-1, 19 MAR 2026 to 16 APR 2026



ELEV 7143	TDZE 7143
-----------	-----------



CATEGORY	A	B	C	D
S-ILS 23	7343-1/2		200 (200-1/2)	
S-LOC 23	7440-1/2		297 (300-1/2)	
CIRCLING	7680-1 537 (600-1)	7760-1 617 (700-1)	7800-1 3/4 657 (700-1 3/4)	7440-3/4 297 (300-3/4) 8000-2 3/4 857 (900-2 3/4)