

WAAS CH 78302 W05A	APP CRS 054°	Rwy Ldg TDZE Apt Elev	7300 7141 7143
--	------------------------	-----------------------------	---

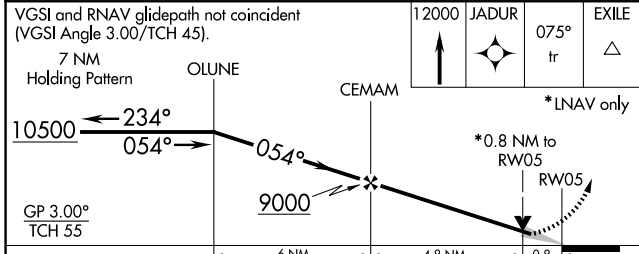
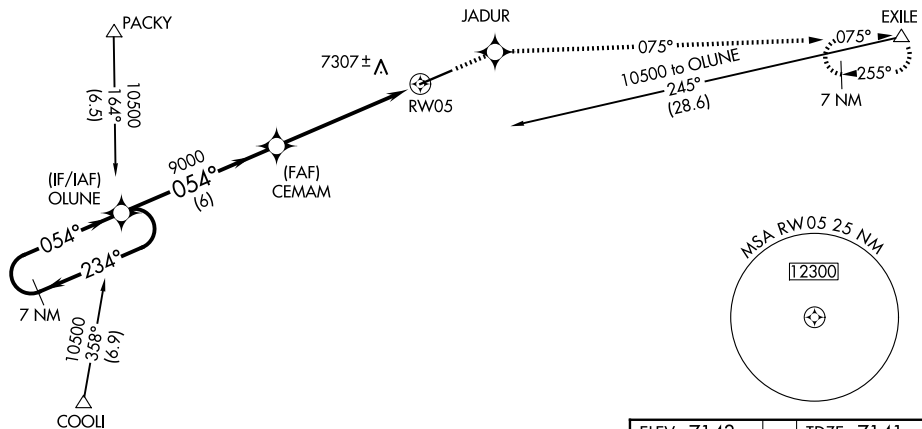
RNAV (GPS) RWY 5

EVANSTON-UINTA COUNTY BURNS FLD (E V W)

RNP APCH. ▼ If local altimeter setting not received, procedure NA. For uncompensated Baro-VNAV systems, LNAV/VNAV NA below -29°C (-20°F) or above 34°C (94°F).		MISSED APPROACH: Climb to 12000 direct JADUR and via 075° track to EXILE and hold, continue climb-in-hold to 12000.	
ASOS 120.0	SALT LAKE CENTER 127.7 354.125	GCO 121.72	UNICOM 123.0 (CTAF) 0

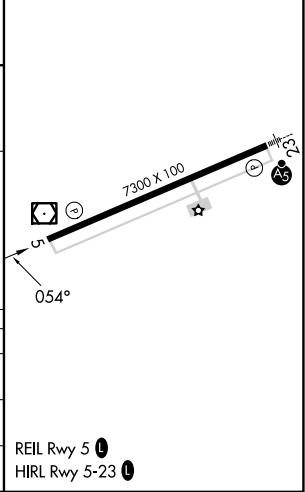
NW-1, 19 MAR 2026 to 16 APR 2026

NW-1, 19 MAR 2026 to 16 APR 2026



ELEV 7143	TDZE 7141
-----------	-----------

CATEGORY	A	B	C	D
LPV DA		7391- ³ / ₄	250 (300- ³ / ₄)	
LNAV/VNAV DA		7643-1 ³ / ₄	502 (500-1 ³ / ₄)	
LNAV MDA		7440-1	299 (300-1)	



REIL Rwy 5 **0**
HIRL Rwy 5-23 **0**