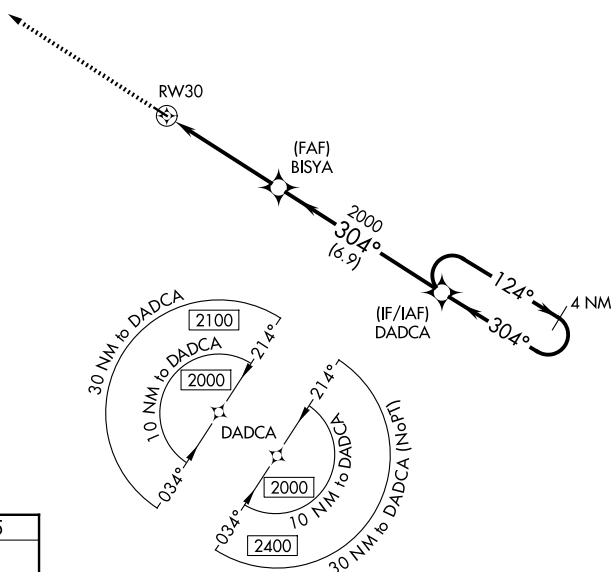


WAAS CH 61208 W30A	APP CRS 304°	Rwy Ldg 3197 TDZE 455 Apt Elev 455
--	------------------------	---

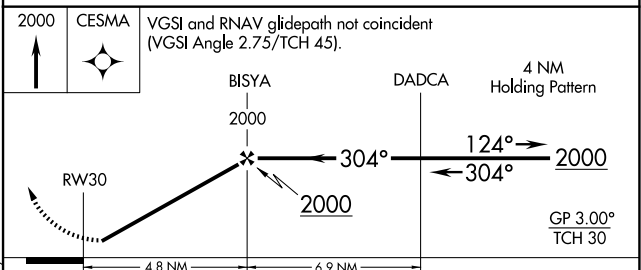
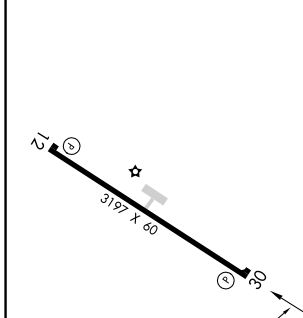
RNAV (GPS) RWY 30

PRENTISS-JEFFERSON DAVIS COUNTY (M43)

<p>▼ Baro-VNAV NA, DME/DME RNP-0.3 NA. Use Brookhaven altimeter setting; when not received, use Hattiesburg/Laurel altimeter setting and increase all DA 27 feet and all MDA 40 feet. Helicopter visibility reduction below $\frac{3}{4}$ SM NA.</p> <p>▲ NA</p>	<p>MISSED APPROACH: Climb to 2000 direct CESMA and hold.</p>	<p>1R7 AWOS-3P 118.125</p> <p>HOUSTON CENTER 126.8 327.8</p> <p>UNICOM 122.8 (CTAF) 0</p>
---	--	--



ELEV 455	TDZE 455
-----------------	-----------------



CATEGORY	A	B	C	D
LPV DA	770-1 $\frac{1}{8}$	315 (400-1 $\frac{1}{8}$)		NA
LNAV/VNAV DA	797-1 $\frac{1}{4}$	342 (400-1 $\frac{1}{4}$)		NA
LNAV MDA	980-1	525 (600-1)		NA
CIRCLING	1020-1	1080-1		NA
	565 (600-1)	625 (700-1)		

SC-4, 19 MAR 2026 to 16 APR 2026

SC-4, 19 MAR 2026 to 16 APR 2026