

APP CRS	Rwy Idg	5752
058°	TDZE	10
	Apt Elev	12

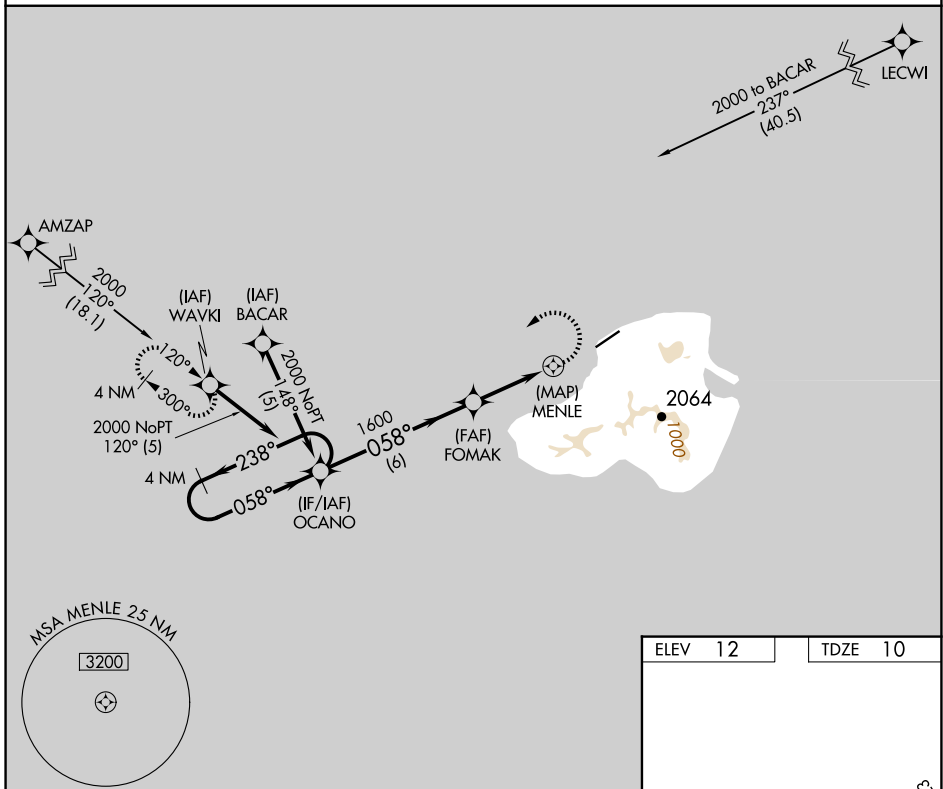
RNAV (GPS) RWY 5

KOSRAE (TTK)(PTSA)

⚠ Circling not authorized southeast of Rwy 5-23.
⚠ Obtain local altimeter setting on CTAF; when not received, procedure not authorized. DME/DME RNP-0.3 NA.
 No controlled airspace below 5500.

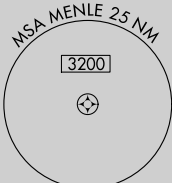
MISSED APPROACH: Climbing left turn to 2000 direct WAVKI WP and hold.

KOSRAE RADIO
123.6 (CTAF) **📻**



PAC, 19 MAR 2026 to 14 MAY 2026

PAC, 19 MAR 2026 to 14 MAY 2026

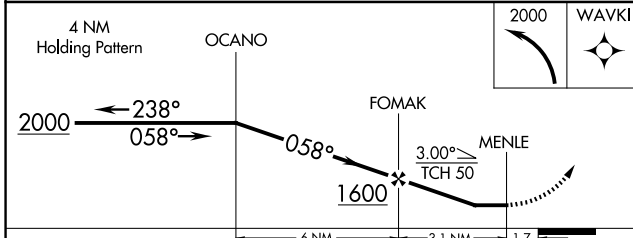


ELEV 12	TDZE 10
---------	---------

5752x150
 5 NM
 058°

CATEGORY	A	B	C	D
LNAV MDA	460-2 450 (500-2)			
CIRCLING	520-2 508 (600-2)		580-2 568 (600-2)	

MIRL Rwy 5-23 **📻**
 REIL Rwys 5 and 23 **📻**



CATEGORY	A	B	C	D
LNAV MDA	460-2 450 (500-2)			
CIRCLING	520-2 508 (600-2)		580-2 568 (600-2)	