

(KER4.KER) 26022  
**KERMIT FOUR DEPARTURE**

AL-6894 (FAA)

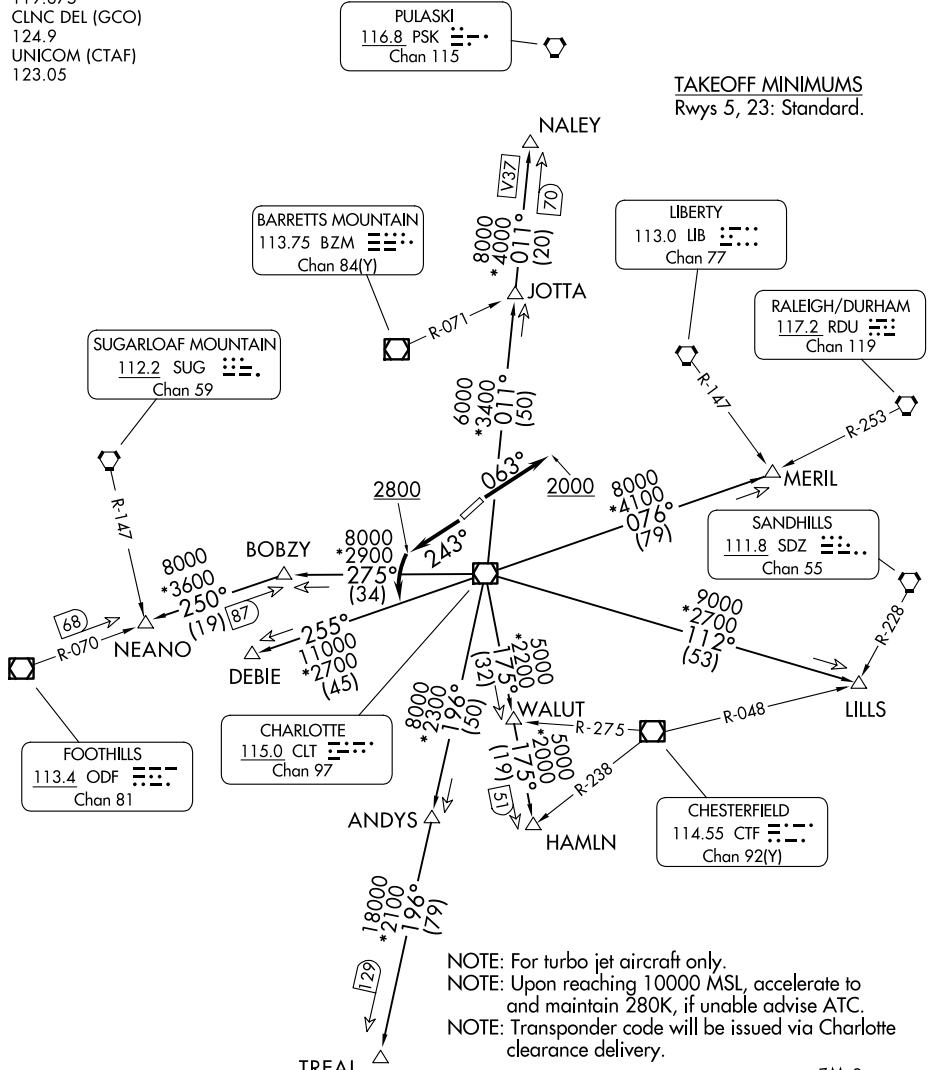
LINCOLN COUNTY RGNL (IPJ)  
 LINCOLNTON, NORTH CAROLINA

CHARLOTTE DEP CON  
 134.75 257.2  
 AWOS-3  
 119.675  
 CLNC DEL (GCO)  
 124.9  
 UNICOM (CTAF)  
 123.05

RADAR and DME required.

**TOP ALTITUDE:  
 3000**

**TAKEOFF MINIMUMS**  
 Rwy's 5, 23: Standard.



SE-2, 19 MAR 2026 to 16 APR 2026

SE-2, 19 MAR 2026 to 16 APR 2026

NOTE: Chart not to scale.

(CONTINUED ON FOLLOWING PAGE)

**KERMIT FOUR DEPARTURE**  
 (KER4.KER) 21 MAR 24

LINCOLN COUNTY RGNL (IPJ)  
 LINCOLNTON, NORTH CAROLINA

# KERMIT FOUR DEPARTURE

LINCOLN, NORTH CAROLINA



## DEPARTURE ROUTE DESCRIPTION

TAKEOFF RUNWAY 5: Climb on heading 063° to 2000 before proceeding on course.  
thence . . . .

TAKEOFF RUNWAY 23: Climb on heading 243° to 2800 before turning left,  
thence . . . .

. . . . on RADAR vectors to intercept filed/assigned transition or enroute fix/navaid.  
Maintain 3000, expect filed altitude/flight level 10 minutes after departure.

ANDYS TRANSITION (KER4.ANDYS): From over CLT VOR/DME on CLT R-196 to ANDYS.

DEBIE TRANSITION (KER4.DEBIE): From over CLT VOR/DME on CLT R-255 to DEBIE.

HAMLN TRANSITION (KER4.HAMLN): From over CLT VOR/DME on CLT R-175 to HAMLN.

JOTTA TRANSITION (KER4.JOTTA): From over CLT VOR/DME on CLT R-011 to JOTTA.

LILLS TRANSITION (KER4.LILLS): From over CLT VOR/DME on CLT R-112 to LILLS.

MERIL TRANSITION (KER4.MERIL): From over CLT VOR/DME on CLT R-076 to MERIL.

NALEY TRANSITION (KER4.NALEY): From over CLT VOR/DME on CLT R-011 to NALEY.

NEANO TRANSITION (KER4.NEANO): From over CLT VOR/DME on CLT R-275 to BOBZY,  
then on ODF R-070 to NEANO.

TREAL TRANSITION (KER4.TREAL): From over CLT VOR/DME on CLT R-196 to TREAL.

SE-2, 19 MAR 2026 to 16 APR 2026

SE-2, 19 MAR 2026 to 16 APR 2026