

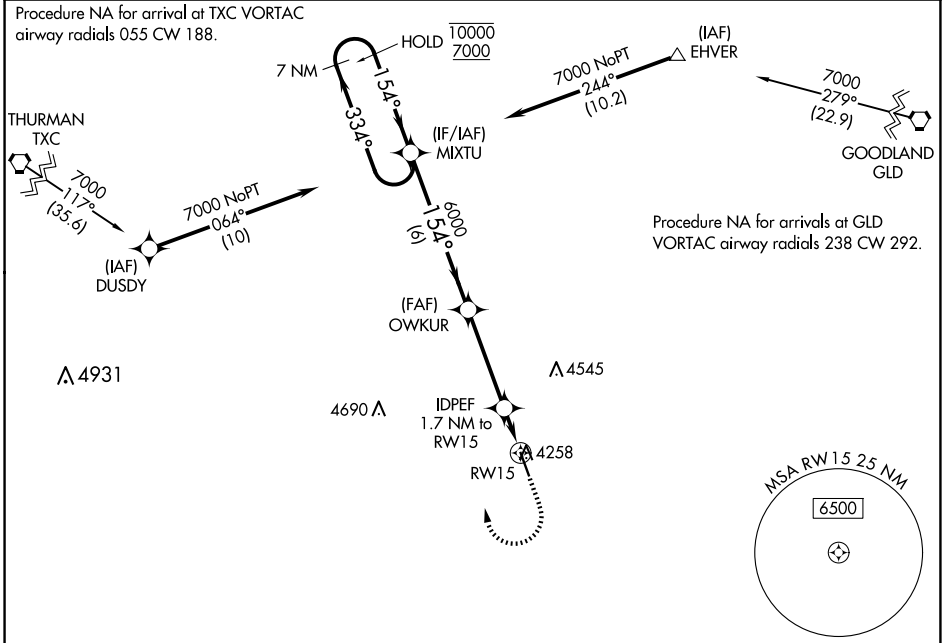
WAAS CH 72999 W 15A	APP CRS 154°	Rwy Idg 5199 TDZE 4218 Apt Elev 4218
---	------------------------	---

RNAV (GPS) RWY 15

KIT CARSON COUNTY (ITR)

RNP APCH - GPS.	MISSED APPROACH: Climb to 4700 then climbing right turn to 7000 direct MIXTU and hold.
<p>▼ For uncompensated Baro-VNAV systems, LNAV/VNAV NA below -23°C or above 54°C.</p>	

ASOS 135.225	DENVER CENTER 132.7 226.675	UNICOM 122.8 (CTAF) 0
------------------------	---------------------------------------	---------------------------------



ELEV 4218		TDZE 4218	
<p>7 NM Holding Pattern</p> <p>VGSI and RNAV glidepath not coincident (VGSI Angle 3.00/TCH 31).</p> <p>COUGAR MOA</p>			
<p>10000 ← 334°</p> <p>7000 ← 154°</p> <p>GP 3.00° TCH 40</p>		<p>4700 7000 MIXTU</p> <p>OWKUR IDPEF 1.7 NM to RW15</p> <p>0.9 NM to RW15 RW15</p>	
6 NM		3.8 NM 0.9 NM 0.9 NM	
CATEGORY	A	B	C
LPV DA		4468-1	250 (300-1)
LNAV/VNAV DA		4468-1	250 (300-1)
LNAV MDA		4520-1	302 (400-1)
◻ CIRCLING	4580-1 362 (400-1)	4700-1 482 (500-1)	4860-1¾ 642 (700-1¾)
			4860-2 642 (700-2)

MIRL Rwy 15-33 0

REIL Rwy 15 and 33 0