

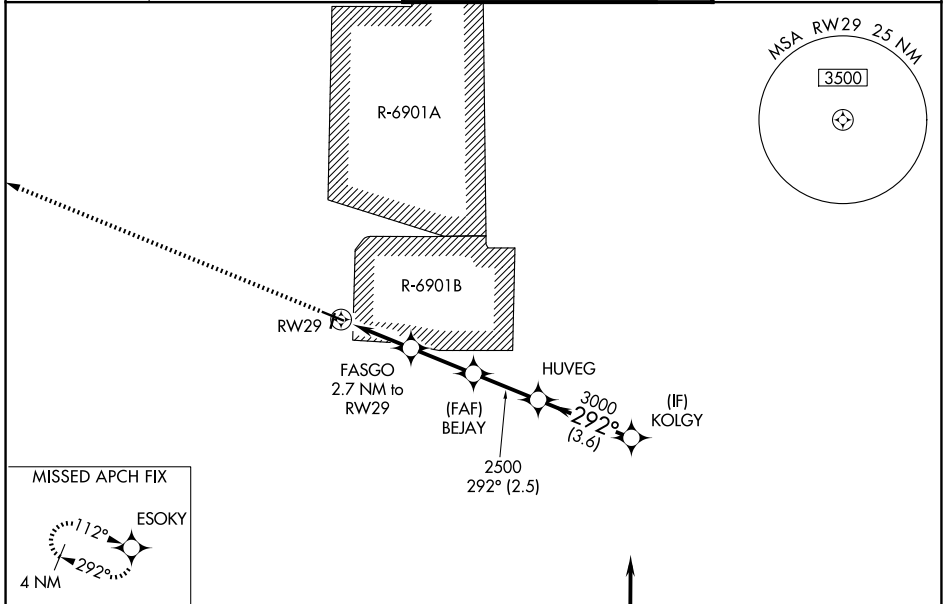
APP CRS	Rwy Ldg	4266
292°	TDZE	831
	Apt Elev	839

RNAV (GPS) RWY 29

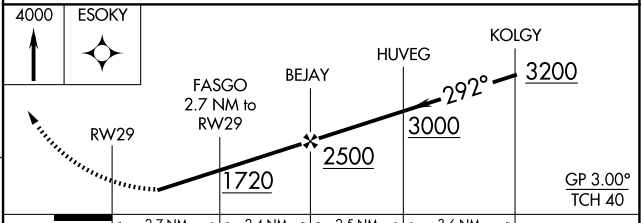
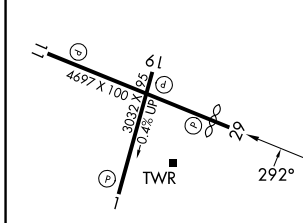
SPARTA/FORT MC COY (CMY)

RNP APCH - GPS.	<p>▼ Rwy 29 helicopter visibility reduction below 1 SM NA. For uncompensated Baro-VNAV systems, LNAV/VNAV NA below -16°C or above 54°C. Straight-in Rwy 29, Circling Rwy 11, 19, 29 NA at night. Procedure NA when R-6901B is active.</p>	<p>MISSED APPROACH: Climb to 4000 direct ESOKY and hold.</p>
-----------------	--	---

ASOS 119.775	VOLK APP CON ★ 135.25 244.875	SPARTA/MC COY TOWER ★ 124.6 (CTAF) 254.375	GND CON 123.625
------------------------	---	--	---------------------------



ELEV 839	TDZE 831
-----------------	-----------------



CATEGORY	A	B	C	D
LNAV/VNAV DA	1263-1¼		432 (500-1¼)	
LNAV MDA	1320-1	489 (500-1)	1320-1¾	489 (500-1¾)
CIRCLING	1520-1 681 (700-1)	1560-1 721 (800-1)	1620-2¼ 781 (800-2¼)	1880-3 1041 (1100-3)

SPARTA, WISCONSIN
Amdt 2 02OCT25

43°58'N-90°44'W

SPARTA/FORT MC COY (CMY) RNAV (GPS) RWY 29

EC-3, 19 MAR 2026 to 16 APR 2026

EC-3, 19 MAR 2026 to 16 APR 2026