

| | | | |
|---|------------------------|-----------------------------|---|
| VORTAC ODI 117.9 Chan 126 | APP CRS 083° | Rwy Ldg TDZE Apt Elev | 4697 829 839 |
|---|------------------------|-----------------------------|---|

VOR RWY 11

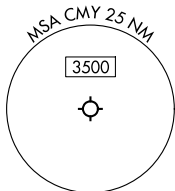
SPARTA/FORT MC COY (CMY)

DME required.

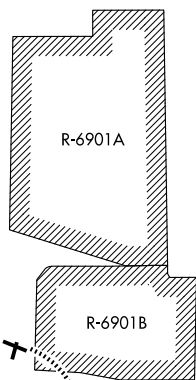
▼ Rwy 11 helicopter visibility reduction below 1 SM NA. When local altimeter setting not received, use LSE altimeter setting and increase all MDAs 80 feet.
 ▲ Straight-in Rwy 11 NA at night, Circling Rwy 11, 19, 29 NA at night.

MISSED APPROACH: Climbing right turn to 4000 on heading 295° and on ODI R-083 to ODI VORTAC and hold.

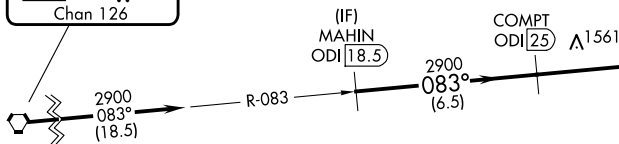
| | | | |
|------------------------|---|--|---------------------------|
| ASOS 119.775 | VOLK APP CON ★ 135.25 244.875 | SPARTA/MC COY TOWER ★ 124.6 (CTAF) 0 254.375 | GND CON 123.625 |
|------------------------|---|--|---------------------------|



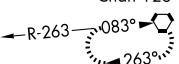
Procedure NA for arrivals at ODI VOR/DME on V82, V170, and V510 northwest bound.



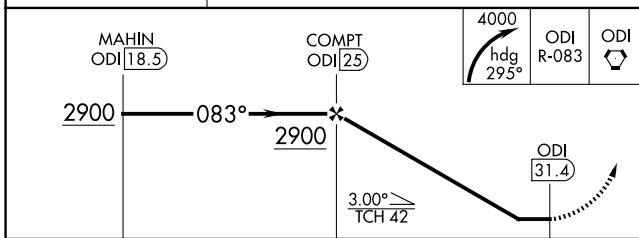
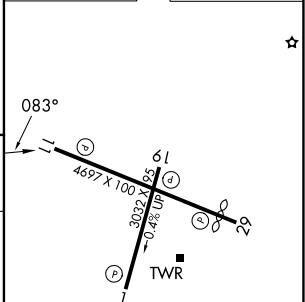
IAF
NODINE
117.9 ODI
Chan 126



MISSED APCH FIX
NODINE
ODI
117.9
Chan 126



| | |
|----------|----------|
| ELEV 839 | TDZE 829 |
|----------|----------|



| CATEGORY | A | B | C | D |
|----------|---------------------------|---------------------------|--------|---------------|
| S-11 | 1960-1¼ 1131 (1200-1¼) | 1960-1½ 1131 (1200-1½) | 1960-3 | 1131 (1200-3) |
| CIRCLING | 1960-1¼ 1121 (1200-1¼) | 1960-1½ 1121 (1200-1½) | 1960-3 | 1121 (1200-3) |

REIL Rws 11 and 29 0
MIRL Rws 1-19 and 11-29 0

EC-3, 19 MAR 2026 to 16 APR 2026

EC-3, 19 MAR 2026 to 16 APR 2026