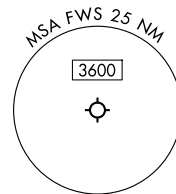


RNAV 1 - DME/DME/IRU or GPS required.  
RADAR required for non-GPS equipped aircraft.

LONE STAR DEP CON  
135.975 379.9  
ATIS  
120.025  
GND CON  
119.475  
SPINKS TOWER \*  
124.625 (CTAF)

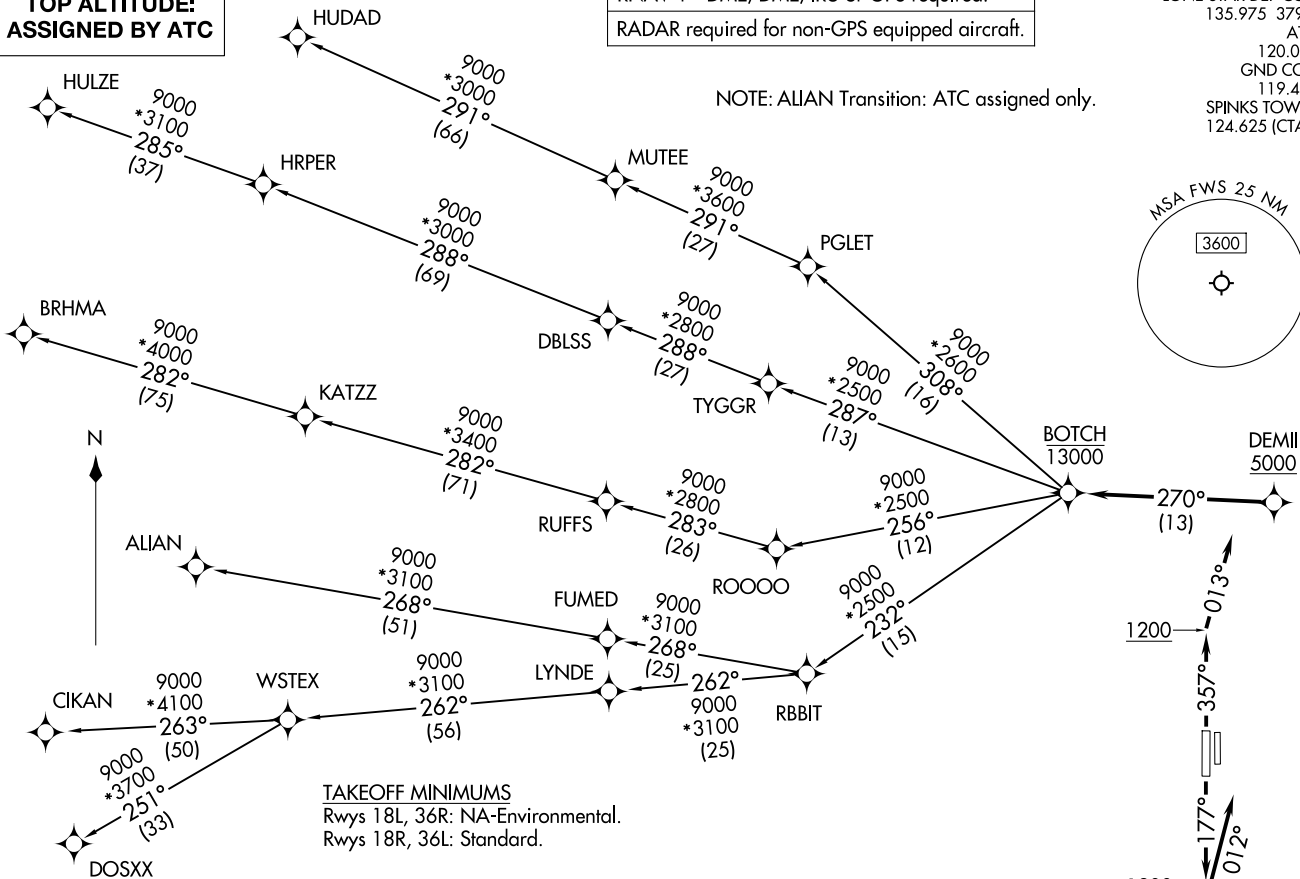
NOTE: ALIAN Transition: ATC assigned only.



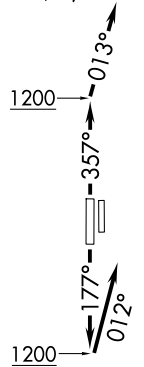
TOP ALTITUDE:  
ASSIGNED BY ATC

BOTCH ONE DEPARTURE (RNAV)  
(BOTCH1 .BOTCH) 17ZAPR25

(BOTCH1 .BOTCH) 25107  
AL-6917 (FAA)



TAKEOFF MINIMUMS  
Rwys 18L, 36R: NA-Environmental.  
Rwys 18R, 36L: Standard.



NOTE: Chart not to scale.

(CONTINUED ON FOLLOWING PAGE)

FORT WORTH, TEXAS  
FORT WORTH SPINKS (FWS)

FORT WORTH SPINKS (FWS)  
FORT WORTH, TEXAS

# BOTCH ONE DEPARTURE (RNAV)



## DEPARTURE ROUTE DESCRIPTION

TAKEOFF RUNWAY 18R: Climb on heading 177° to 1200, then on heading 012° or as assigned by ATC, for vectors to cross DEMII at or above 5000, thence. . .

TAKEOFF RUNWAY 36L: Climb on heading 357° to 1200, then on heading 013° or as assigned by ATC, for vectors to cross DEMII at or above 5000, thence. . .

. . . on track 270° to cross BOTCH at or below 13000, then on (transition). Maintain ATC assigned altitude, expect filed altitude 10 minutes after departure.

ALIAN TRANSITION (BOTCH1.ALIAN)

BRHMA TRANSITION (BOTCH1.BRHMA)

CIKAN TRANSITION (BOTCH1.CIKAN)

DOSXX TRANSITION (BOTCH1.DOSXX)

HUDAD TRANSITION (BOTCH1.HUDAD)

HULZE TRANSITION (BOTCH1.HULZE)

WSTEX TRANSITION (BOTCH1.WSTEX)

SC-2, 19 MAR 2026 to 16 APR 2026

SC-2, 19 MAR 2026 to 16 APR 2026