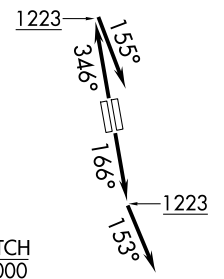
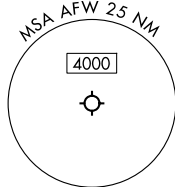
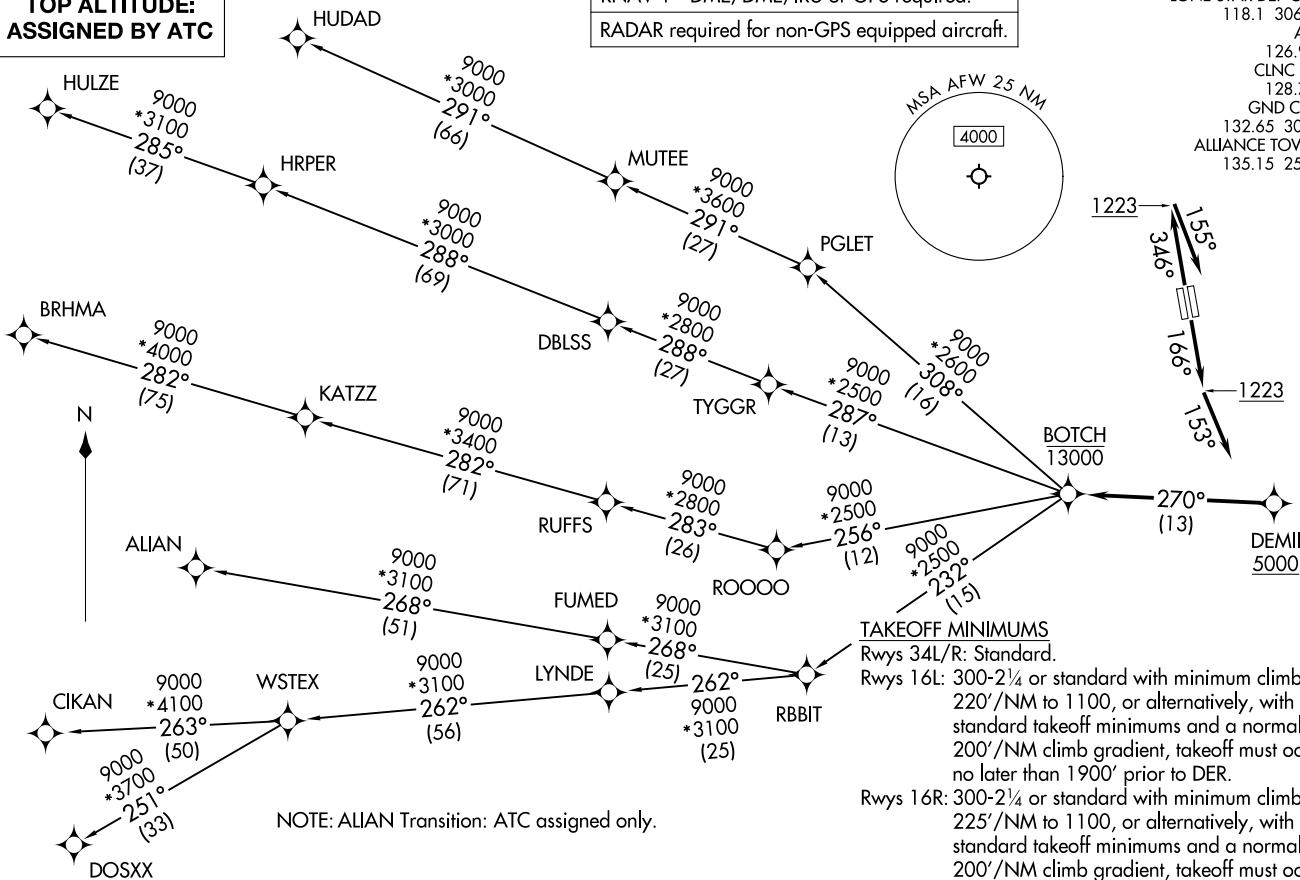


RNAV 1 - DME/DME/IRU or GPS required.
RADAR required for non-GPS equipped aircraft.

LONE STAR DEP CON 118.1 306.95
ATIS 126.925
CLNC DEL 128.725
GND CON 132.65 306.2
ALLIANCE TOWER 135.15 257.9



TOP ALTITUDE:
ASSIGNED BY ATC



NOTE: ALIAN Transition: ATC assigned only.

TAKEOFF MINIMUMS
Rwys 34L/R: Standard.
Rwys 16L: 300-2¼ or standard with minimum climb of 220'/NM to 1100, or alternatively, with standard takeoff minimums and a normal 200'/NM climb gradient, takeoff must occur no later than 1900' prior to DER.
Rwys 16R: 300-2¼ or standard with minimum climb of 225'/NM to 1100, or alternatively, with standard takeoff minimums and a normal 200'/NM climb gradient, takeoff must occur no later than 2000' prior to DER.

(CONTINUED ON FOLLOWING PAGE)

NOTE: Chart not to scale.

BOTCH ONE DEPARTURE (RNAV)
(BOTCH1 .BOTCH) 17ZAPR25

FORT WORTH, TEXAS
PEROT FLD./FORT WORTH ALLIANCE (AFTW)

(BOTCH1 .BOTCH) 25107
BOTCH ONE DEPARTURE (RNAV)

AL-6918 (FAA)
PEROT FLD./FORT WORTH ALLIANCE (AFTW)
FORT WORTH, TEXAS

BOTCH ONE DEPARTURE (RNAV)



DEPARTURE ROUTE DESCRIPTION

TAKEOFF RUNWAYS 16L/R: Climb on heading 166° to 1223, then on heading 153° or as assigned by ATC, for vectors to cross DEMIII at or above 5000, thence. . .

TAKEOFF RUNWAYS 34L/R: Climb on heading 346° to 1223, then on heading 155° or as assigned by ATC, for vectors to cross DEMIII at or above 5000, thence. . .

. . . on track 270° to cross BOTCH at or below 13000, then on (transition). Maintain ATC assigned altitude, expect filed altitude 10 minutes after departure.

ALIAN TRANSITION (BOTCH1.ALIAN)

BRHMA TRANSITION (BOTCH1.BRHMA)

CIKAN TRANSITION (BOTCH1.CIKAN)

DOSXX TRANSITION (BOTCH1.DOSXX)

HUDAD TRANSITION (BOTCH1.HUDAD)

HULZE TRANSITION (BOTCH1.HULZE)

WSTEX TRANSITION (BOTCH1.WSTEX)

SC-2, 19 MAR 2026 to 16 APR 2026

SC-2, 19 MAR 2026 to 16 APR 2026