

APP CRS **271°** Rwy Idg **3998**  
 TDZE **320**  
 Apt Elev **321**

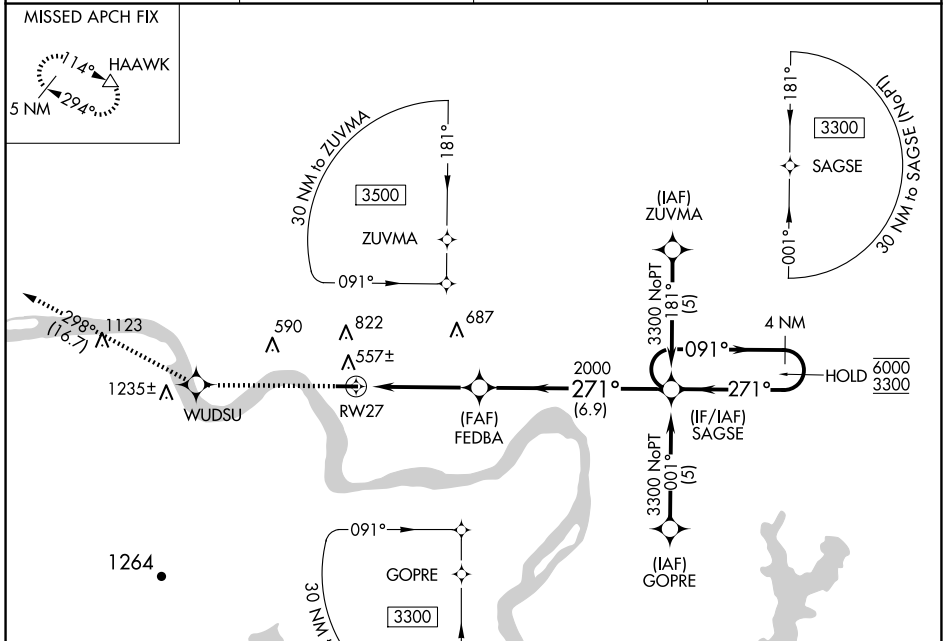
# RNAV (GPS) RWY 27

MORRILTON MUNI (BDQ)

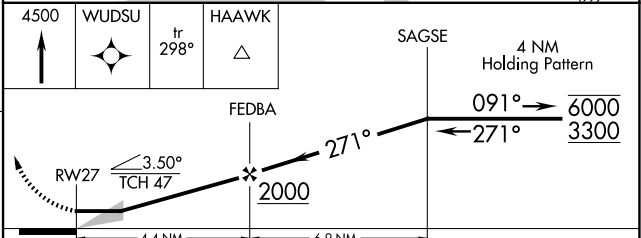
RNP APCH - GPS. MISSED APPROACH: Climb to 4500 direct WUDSU and on track 298° to HAAWK and hold.

Use RUE altimeter setting; when not received, use LIT altimeter setting and increase all MDAs 40 feet and LNAV visibility Cat B ¼ SM, and Circling Cat B visibility ¼ SM.

RUE AWOS <b>132.475</b>	MEMPHIS CENTER <b>128.475 377.15</b>	UNICOM <b>122.8 (CTAF)</b>	<b>122.9</b>
----------------------------	---	-------------------------------	--------------



ELEV 321 TDZE 320



CATEGORY	A	B	C	D
LNAV MDA	1060-1	740 (800-1)	NA	
CIRCLING	1060-1 739 (800-1)	1260-1¼ 939 (1000-1¼)	NA	

SC-1, 19 MAR 2026 to 16 APR 2026

SC-1, 19 MAR 2026 to 16 APR 2026