

VOR/DME FAR 116.2 Chan 109	APP CRS 283°	Rwy Idg TDZE Apt Elev	3901 933 933
--	------------------------	-----------------------------	---

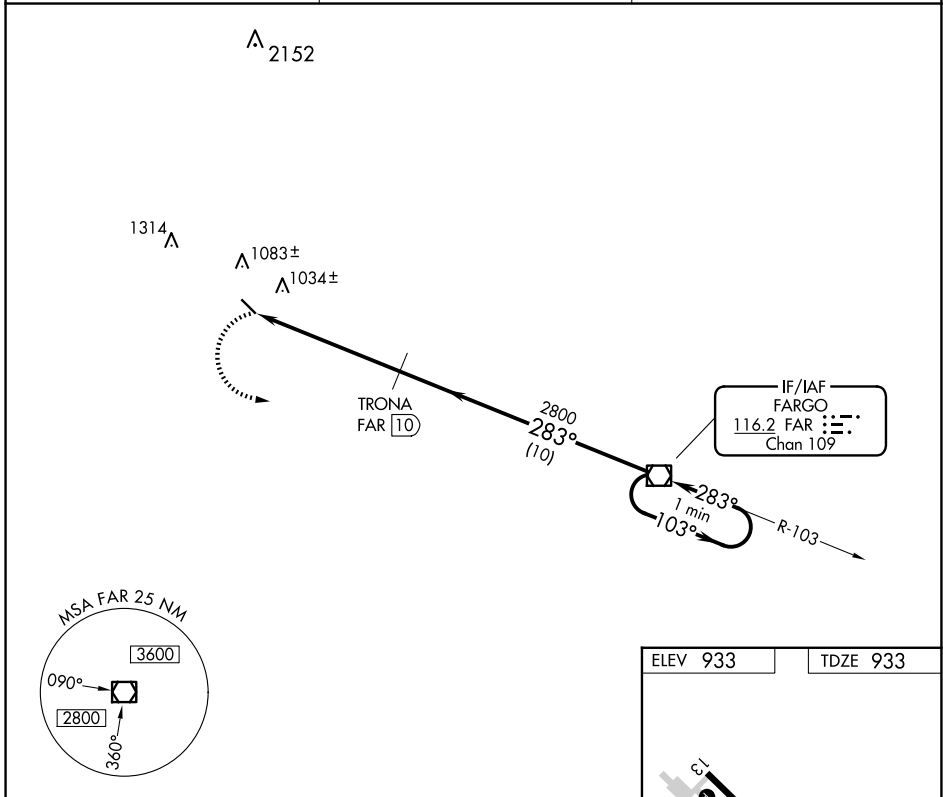
VOR/DME RWY 31

CASSELTON ROBERT MILLER RGNL (5N8)

NA Use Fargo altimeter setting; when not received, use Moorhead altimeter setting and increase all MDA 20 feet.

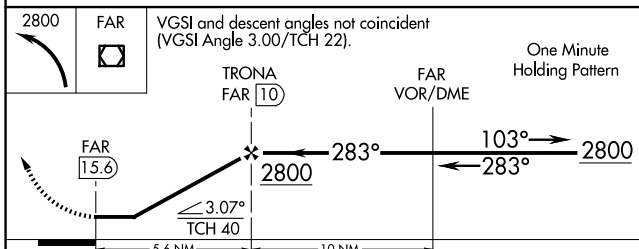
MISSED APPROACH: Climbing left turn to 2800 direct FAR VOR/DME and hold.

FAR ASOS 124.5 379.2	FARGO APP CON 120.4 377.15	UNICOM 122.8 (CTAF) 0
--------------------------------	--------------------------------------	---------------------------------



NC-1, 19 MAR 2026 to 16 APR 2026

NC-1, 19 MAR 2026 to 16 APR 2026



ELEV 933	TDZE 933
----------	----------

REIL Rwy 31 0
MIRL Rwy 13-31 0

CATEGORY	A	B	C	D
S-31	1360-1	427 (500-1)	1360-1½ 427 (500-1½)	NA
CIRCLING	1480-1 547 (600-1)	1520-1 587 (600-1)	1620-2 687 (700-2)	NA