

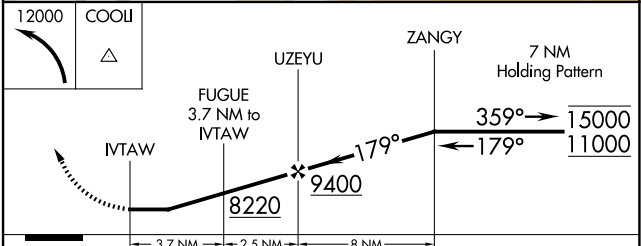
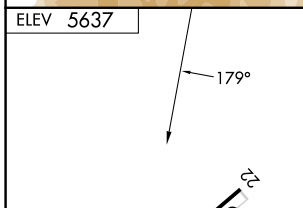
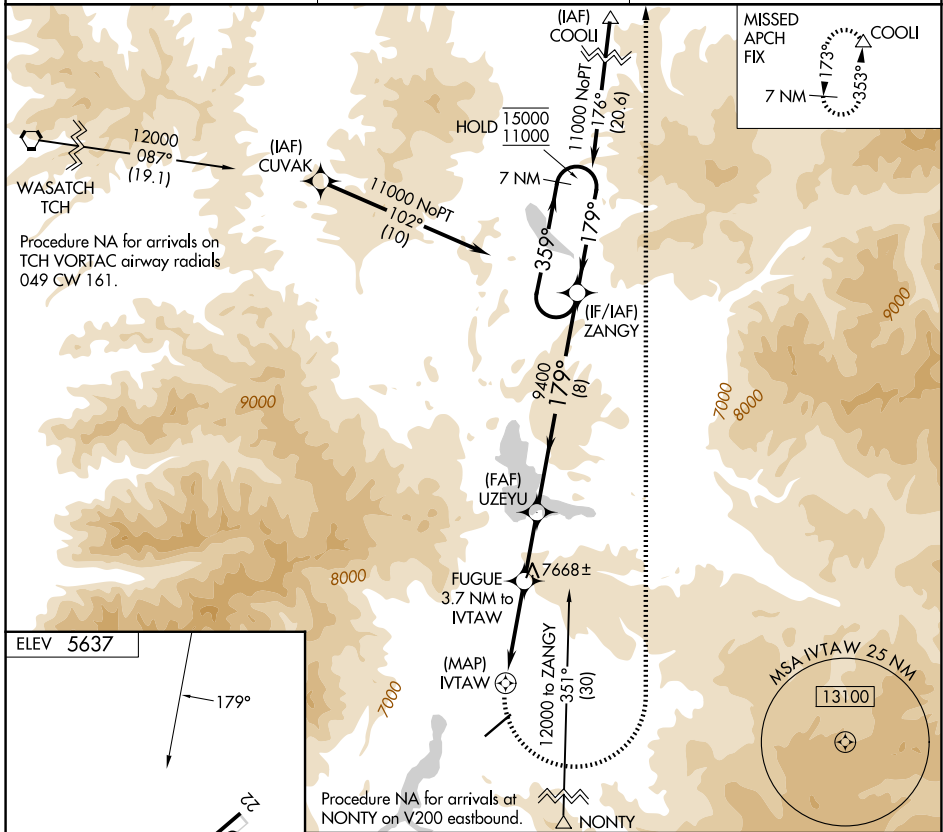
APP CRS 179°	Rwy Ldg TDZE Apt Elev	N/A N/A 5637
------------------------	-----------------------------	---

RNAV (GPS)-A

HEBER VALLEY (HCR)

RNP APCH. ▼ ▲ ⊕ -1.6°C	Circling NA south of Rwy 4-22. Circling Rwy 4 NA at night.	MISSED APPROACH: (Do not exceed 210K until turn completion) Climbing left turn to 12000 direct COOLI and hold.
---------------------------------	---	---

AWOS-3PT 124.825	SALT LAKE CITY CENTER 119.95 377.15	UNICOM 122.8 (CTAF)
----------------------------	---	-------------------------------



CATEGORY	A	B	C	D
CIRCLING	8020-1½	2383 (2400-1½)	8020-3 2383 (2400-3)	NA

SW-4, 19 MAR 2026 to 16 APR 2026

SW-4, 19 MAR 2026 to 16 APR 2026