

WAAS CH <b>90521</b> <b>W24A</b>	APP CRS <b>241°</b>	Rwy Idg TDZE Apf Elev	<b>4400</b> <b>1073</b> <b>1073</b>
--	------------------------	-----------------------------	---

# RNAV (GPS) RWY 24

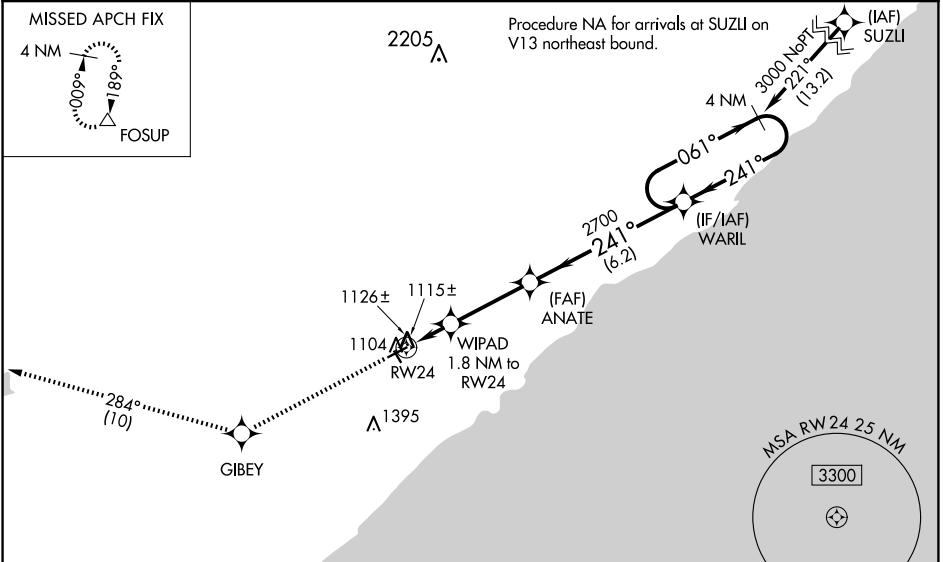
RICHARD B HELGESON (TWM)

RNP APCH.

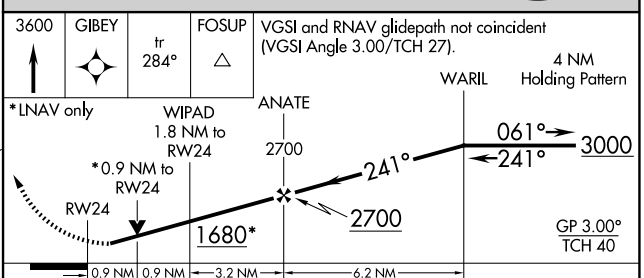
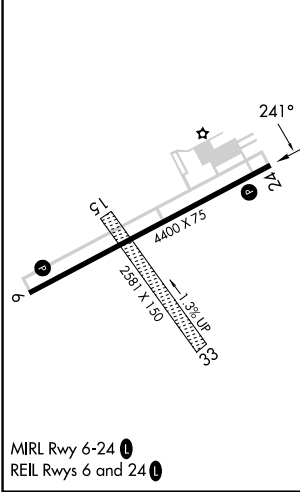
⚠ Baro-VNAV NA and VDP NA when using Duluth Intl altimeter setting. For uncompensated Baro-VNAV systems, LNAV/VNAV NA below -17°C or above 54°C. When local altimeter setting not received, use Duluth Intl altimeter setting; increase LPV and LNAV/VNAV DA to 1424 feet and visibility all Cats ¼ SM; increase all MDA 120 feet. Rwy 24 helicopter visibility reduction below ¾ SM NA. Circling to Rwy 15, 33 NA.

MISSED APPROACH:  
Climb to 3600 direct GIBEY and on track 284° to FOSUP and hold.

AWOS-3PT <b>119.325</b>	DULUTH APP CON <b>125.45 233.7</b>	GCO <b>121.725</b>	CTAF <b>122.9 0</b>
----------------------------	---------------------------------------	-----------------------	------------------------



ELEV 1073	TDZE 1073
-----------	-----------



CATEGORY	A	B	C	D
LPV DA	1323-7/8 250 (300-7/8)			NA
LNAV/VNAV DA	1323-7/8 250 (300-7/8)			NA
LNAV MDA	1380-1 307 (400-1)			NA
CIRCLING	1600-1 527 (600-1)	1760-1 687 (700-1)		NA

NC-1, 19 MAR 2026 to 16 APR 2026

NC-1, 19 MAR 2026 to 16 APR 2026