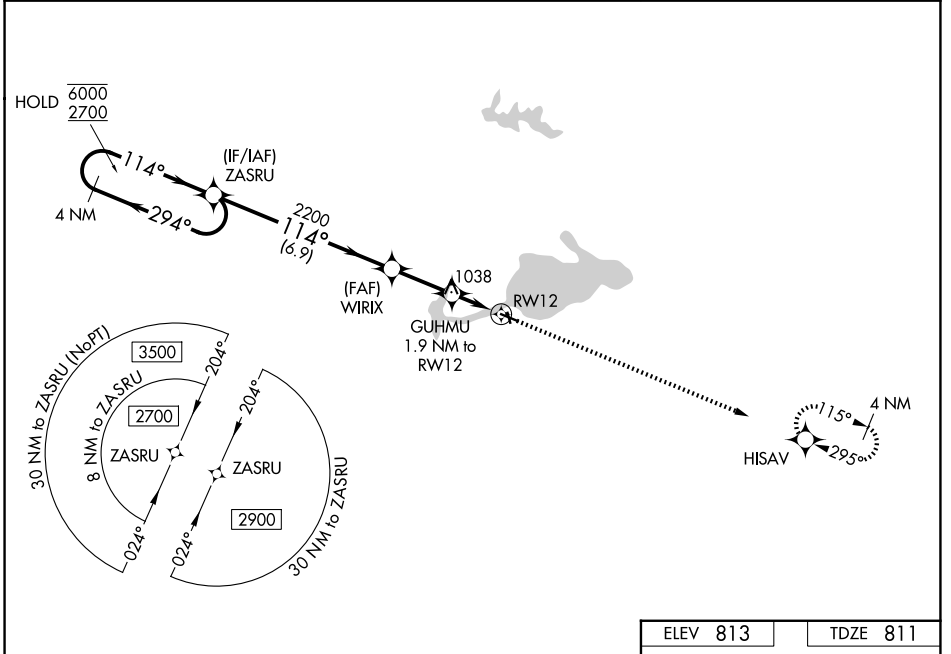


WAAS CH 86429 W12A	APP CRS 114°	Rwy Ldg TDZE Apt Elev	3901 811 813
--	------------------------	-----------------------------	---

RNAV (GPS) RWY 12

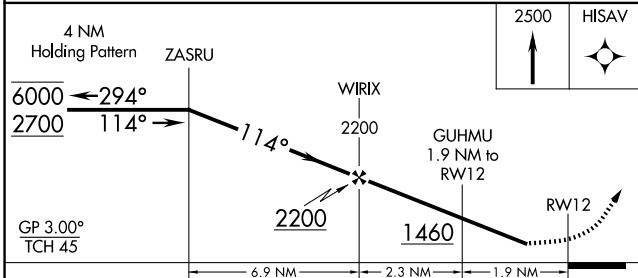
SHAWANO MUNI (E/ZS)

RNP APCH - GPS.		MISSED APPROACH: Climb to 2500 direct HISAV and hold.
<p>▼ Rwy 12 helicopter visibility reduction below 1 SM NA. For uncompensated Baro-VNAV systems, LNAV/VNAV NA below -16°C or above 54°C. Straight-in Rwy 12 and Circling Rwy 12, 35 NA at night.</p> <p>▲</p>		
AWOS-3 118.65	GREEN BAY APP CON ★ 119.4 338.2	UNICOM 122.8 (CTAF) 0



EC-3, 19 MAR 2026 to 16 APR 2026

EC-3, 19 MAR 2026 to 16 APR 2026



ELEV 813	TDZE 811																									
<p>4 NM Holding Pattern ZASRU</p> <p>6000 ← 294°</p> <p>2700 → 114°</p> <p>GP 3.00° TCH 45</p> <p>2200</p> <p>1460</p> <p>2500 HISAV</p> <p>WIRIX 2200</p> <p>GUHMU 1.9 NM to RWY 12</p> <p>RWY 12</p> <p>6.9 NM</p> <p>2.3 NM</p> <p>1.9 NM</p>																										
<table border="1"> <thead> <tr> <th>CATEGORY</th> <th>A</th> <th>B</th> <th>C</th> <th>D</th> </tr> </thead> <tbody> <tr> <td>LPV DA</td> <td colspan="2">1082-1</td> <td colspan="2">271 (300-1)</td> </tr> <tr> <td>LNAV/VNAV DA</td> <td colspan="2">1378-1⁵/₈</td> <td colspan="2">567 (600-1⁵/₈)</td> </tr> <tr> <td>LNAV MDA</td> <td>1300-1</td> <td>489 (500-1)</td> <td>1300-1³/₈</td> <td>489 (500-1³/₈)</td> </tr> <tr> <td>CIRCLING</td> <td>1340-1 527 (600-1)</td> <td>1440-1 627 (700-1)</td> <td>1680-2¹/₂ 867 (900-2¹/₂)</td> <td>1680-2³/₄ 867 (900-2³/₄)</td> </tr> </tbody> </table>		CATEGORY	A	B	C	D	LPV DA	1082-1		271 (300-1)		LNAV/VNAV DA	1378-1 ⁵ / ₈		567 (600-1 ⁵ / ₈)		LNAV MDA	1300-1	489 (500-1)	1300-1 ³ / ₈	489 (500-1 ³ / ₈)	CIRCLING	1340-1 527 (600-1)	1440-1 627 (700-1)	1680-2 ¹ / ₂ 867 (900-2 ¹ / ₂)	1680-2 ³ / ₄ 867 (900-2 ³ / ₄)
CATEGORY	A	B	C	D																						
LPV DA	1082-1		271 (300-1)																							
LNAV/VNAV DA	1378-1 ⁵ / ₈		567 (600-1 ⁵ / ₈)																							
LNAV MDA	1300-1	489 (500-1)	1300-1 ³ / ₈	489 (500-1 ³ / ₈)																						
CIRCLING	1340-1 527 (600-1)	1440-1 627 (700-1)	1680-2 ¹ / ₂ 867 (900-2 ¹ / ₂)	1680-2 ³ / ₄ 867 (900-2 ³ / ₄)																						
<p>WATER ALL-WAY: 12000 X 1000</p> <p>MIRL Rwy 12-30 and 17-35 0</p> <p>REIL Rwy 30 0</p>																										