

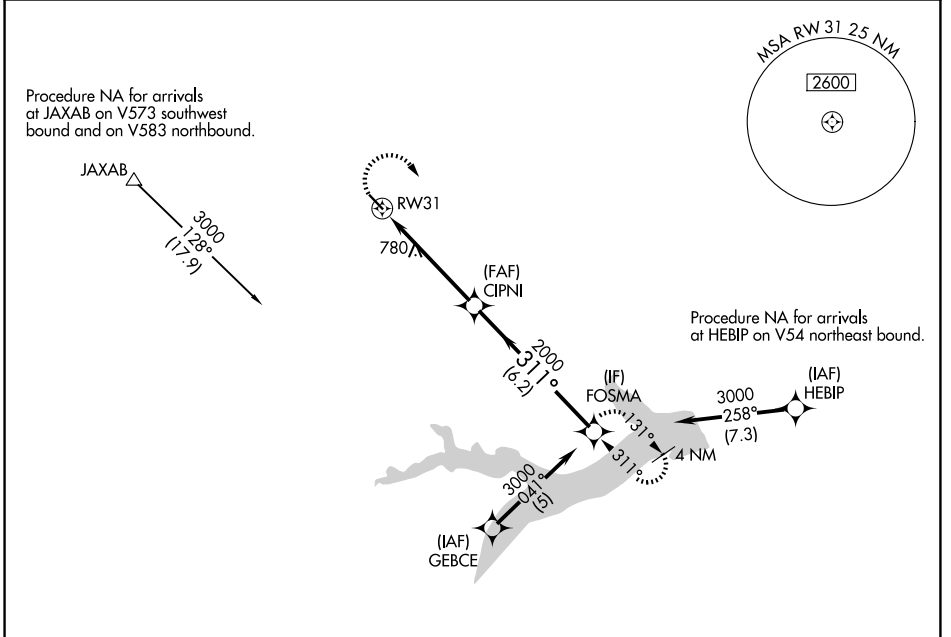
APP CRS 311°	Rwy Ldg TDZE Apt Elev	3900 412 412
------------------------	-----------------------------	---

RNAV (GPS) RWY 31

FRANKLIN COUNTY (F53)

RNP APCH.
 ⚠ NA Circling Rwy 13 NA at night. Rwy 31 helicopter visibility reduction below 3/4 SM NA.
 Use Mount Pleasant Rgnl altimeter setting; when not received, procedure NA.
 MISSED APPROACH: Climbing right turn to 3000 direct FOSMA and hold.

OSA AWOS-3 119.775	FORT WORTH CENTER 132.025 317.75	UNICOM 123.0 (CTAF)
------------------------------	--	-------------------------------



SC-2, 19 MAR 2026 to 16 APR 2026

SC-2, 19 MAR 2026 to 16 APR 2026

	ELEV 412 TDZE 412
--	------------------------

CATEGORY	A	B	C	D
LNVA MDA	1160-1 748 (800-1)	1160-1¼ 748 (800-1¼)	NA	
CIRCLING	1160-1 748 (800-1)	1160-1¼ 748 (800-1¼)	NA	

MIRL Rwy 13-31