

WAAS CH <b>40325</b> <b>W36A</b>	APP CRS <b>358°</b>	Rwy Idg TDZE <b>280</b> Apt Elev <b>282</b>	<b>3807</b>
--	------------------------	---	-------------

# RNAV (GPS) RWY 36

LEESVILLE (L39)

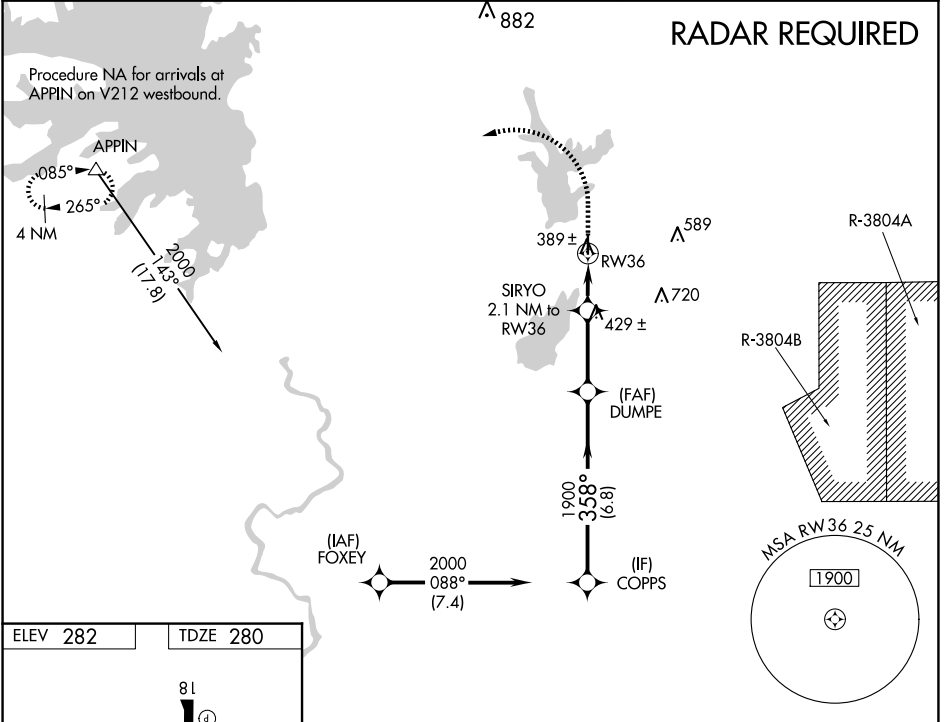
**⚠** When VGSI inop, Straight-in/Circling Rwy 36 procedure NA at night. DME/DME NA RNP-0.3 NA. Visibility reduction by helicopters NA. Use Fort Polk altimeter setting; when not received, use De Ridder altimeter setting and increase all MDA 40 feet, increase LP Cat C visibility  $\frac{1}{8}$  SM, and Circling Cat C visibility  $\frac{1}{4}$  SM.

**MISSED APPROACH:** Climb to 800 then climbing left turn to 4000 direct APPIN and hold.

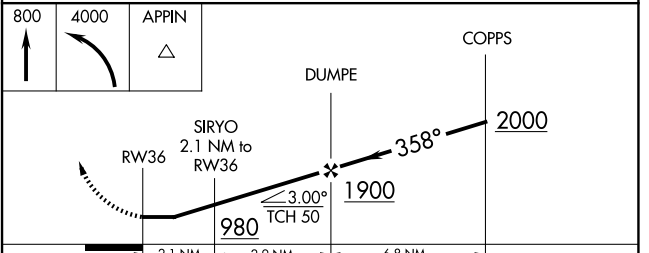
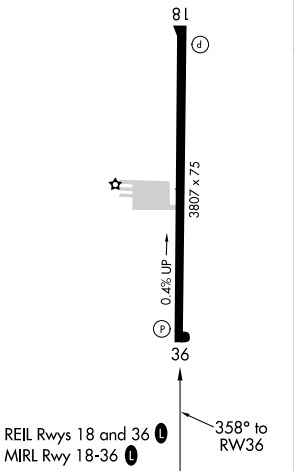
KPOE ATIS  
**134.85 282.2**

POLK APP CON  
**123.7 261.3**

UNICOM  
**122.8** (CTAF) **📻**



ELEV 282 TDZE 280



CATEGORY	A	B	C	D
LP MDA	680-1	400 (400-1)	680-1 $\frac{1}{8}$ 400 (400-1 $\frac{1}{8}$ )	NA
LNAV MDA	720-1	440 (500-1)	720-1 $\frac{3}{8}$ 440 (500-1 $\frac{3}{8}$ )	NA
CIRCLING	760-1 478 (500-1)	800-1 518 (600-1)	1000-2 718 (800-2)	NA