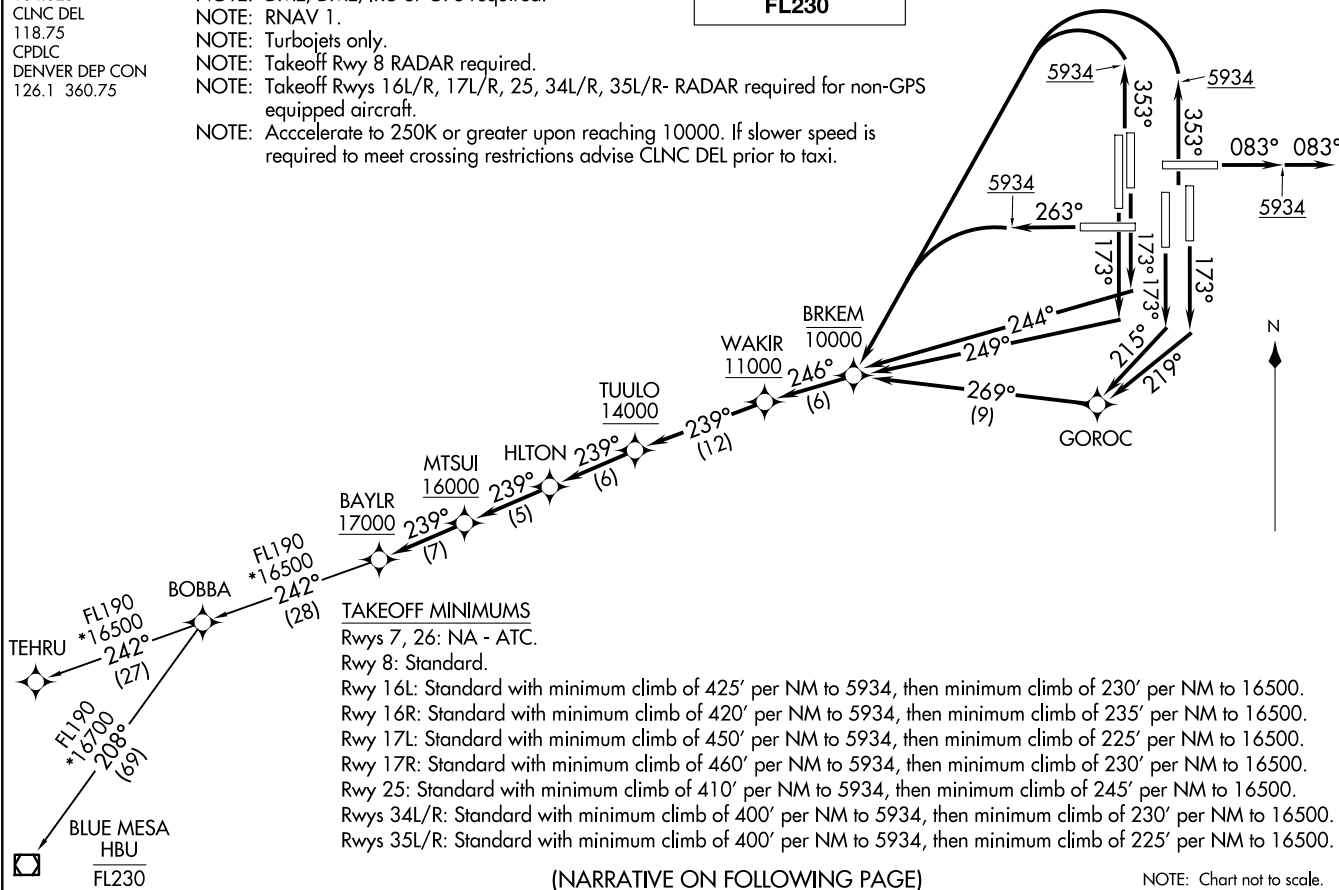


BAYLR SIX DEPARTURE (RNAV)  
(BAYLR6, BAYLR) 26MAR20

D-ATIS DEP  
134.025  
CLNC DEL  
118.75  
CPDLC  
DENVER DEP CON  
126.1 360.75

NOTE: DME/DME/IRU or GPS required.  
NOTE: RNAV 1.  
NOTE: Turbojets only.  
NOTE: Takeoff Rwy 8 RADAR required.  
NOTE: Takeoff Rws 16L/R, 17L/R, 25, 34L/R, 35L/R- RADAR required for non-GPS equipped aircraft.  
NOTE: Accelerate to 250K or greater upon reaching 10000. If slower speed is required to meet crossing restrictions advise CLNC DEL prior to taxi.

TOP ALTITUDE:  
FL230



(NARRATIVE ON FOLLOWING PAGE)

NOTE: Chart not to scale.

(BAYLR6, BAYLR) 20086  
BAYLR SIX DEPARTURE (RNAV)

AL-9077 (FAA)

DENVER INTL (DEN)  
DENVER, COLORADO

DENVER, COLORADO  
DENVER INTL (DEN)



DEPARTURE ROUTE DESCRIPTION  
SEE ADDITIONAL REQUIREMENTS ON AAUP

TAKEOFF RUNWAY 8: Climb on heading 083° to 5934, then on heading 083° or as assigned by ATC, expect vectors to cross WAKIR at or above 11000, thence . . .

TAKEOFF RUNWAY 16L: Climb on heading 173° to intercept course 244° to cross BRKEM at or below 10000, then on track 246° to cross WAKIR at or above 11000, thence . . .

TAKEOFF RUNWAY 16R: Climb on heading 173° to intercept course 249° to cross BRKEM at or below 10000, then on track 246° to cross WAKIR at or above 11000, thence . . .

TAKEOFF RUNWAY 17L: Climb on heading 173° to intercept course 219° to GOROC, then on track 269° to cross BRKEM at or below 10000, then on track 246° to cross WAKIR at or above 11000, thence . . .

TAKEOFF RUNWAY 17R: Climb on heading 173° to intercept course 215° to GOROC, then on track 269° to cross BRKEM at or below 10000, then on track 246° to cross WAKIR at or above 11000, thence . . .

TAKEOFF RUNWAY 25: Climb on heading 263° to 5934, then climbing left turn direct to cross BRKEM at or below 10000, then on track 246° to cross WAKIR at or above 11000, thence . . .

TAKEOFF RUNWAYS 34L/R, 35L/R: Climb on heading 353° to 5934, then climbing left turn direct to cross BRKEM at or below 10000, then on track 246° to cross WAKIR at or above 11000, thence . . .

. . . on track 239° to cross TUULO at or above 14000, then on track 239° to HLTON, then on track 239° to cross MTSUI at or above 16000, then on track 239° to cross BAYLR at or above 17000. Then on (transition) maintain FL230 or filed lower altitude. Expect higher filed altitude ten minutes after departure.

BLUE MESA TRANSITION (BAYLR6.HBU)

TEHRU TRANSITION (BAYLR6.TEHRU)

SW-1, 19 MAR 2026 to 16 APR 2026

SW-1, 19 MAR 2026 to 16 APR 2026