

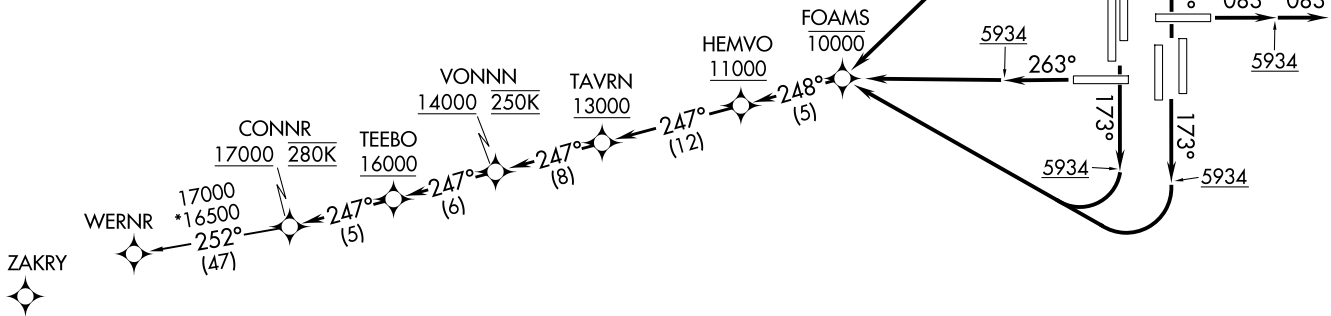
CONNR EIGHT DEPARTURE (RNAV)
(CONNR8, CONNR) 19MAR26

RNAV 1 - DME/DME/IRU or GPS.
TAKEOFF Rwy 8 RADAR required.
TAKEOFF Rwys 16L/R, 17L/R, 25, 34L/R, 35L/R
RADAR required for non-GPS equipped aircraft.

**TOP ALTITUDE:
FL230**

DENVER DEP CON 126.1 360.75
D-ATIS DEP 134.025
CLNC DEL 118.75
CPDLC

NOTE: Turbojets only.
NOTE: Accelerate to 250K upon reaching 10000. If slower speed is required to meet crossing restrictions, advise CLNC DEL prior to taxi.



TAKEOFF MINIMUMS

Rwys 7, 26: NA - ATC.

Rwy 8: Standard.

Rwy 16L: Standard with minimum climb 425'/NM to 5934, then minimum climb of 210'/NM to 16000.

Rwy 16R: Standard with minimum climb 420'/NM to 5934, then minimum climb of 250'/NM to 16000.

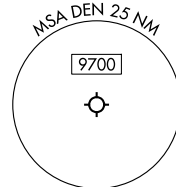
Rwy 17L: Standard with minimum climb 450'/NM to 5934.

Rwy 17R: Standard with minimum climb 460'/NM to 5934, then minimum climb of 205'/NM to 16000.

Rwy 25: Standard with minimum climb 400'/NM to 5934, then minimum climb of 225'/NM to 16000.

Rwys 34L/R: Standard with minimum climb 400'/NM to 5934, then minimum climb of 210'/NM to 16000.

Rwys 35L/R: Standard with minimum climb 400'/NM to 5934.



(CONTINUED ON FOLLOWING PAGE)

NOTE: Chart not to scale.

DENVER, COLORADO
DENVER INTL (DEN)

(CONNR8, CONNR) 26078

AL-9077 (FAA)

DENVER INTL (DEN)
DENVER, COLORADO



DEPARTURE ROUTE DESCRIPTION
SEE ADDITIONAL REQUIREMENTS ON AAUP

TAKEOFF RUNWAY 8: Climb on heading 083° to 5934, then on heading 083° or as assigned by ATC, for vectors to cross TAVRN at or above 13000, thence. . . .

TAKEOFF RUNWAY 16L/R, 17L/R: Climb on heading 173° to 5934, then right turn direct to cross FOAMS at or below 10000, then on track 248° to cross HEMVO at or above 11000, then on track 247° to cross TAVRN at or above 13000, thence. . . .

TAKEOFF RUNWAY 25: Climb on heading 263° to 5934, then direct to cross FOAMS at or below 10000, then on track 248° to cross HEMVO at or above 11000, then on track 247° to cross TAVRN at or above 13000, thence. . . .

TAKEOFF RUNWAYS 34L/R, 35L/R: Climb on heading 353° to 5934, then left turn direct to cross FOAMS at or below 10000, then on track 248° to cross HEMVO at or above 11000, then on track 247° to cross TAVRN at or above 13000, thence. . . .

. . . .on track 247° to cross VONNN at or above 14000 and at 250K, then on track 247° to cross TEEBO at or above 16000, then on track 247° to cross CONNR at or above 17000 and at 280K. Then on transition. Maintain FL230. Expect higher filed altitude 10 minutes after departure.

WERNR TRANSITION (CONNR8.WERNR)

SW-1, 19 MAR 2026 to 16 APR 2026

SW-1, 19 MAR 2026 to 16 APR 2026